



KERN SB 375 MODELING METHODOLOGY - DRAFT

Kern Council of Governments

11/22/2011 version 9

PAGE INTENTIONALLY LEFT BLANK

TABLE OF CONTENTS

Executive Summary

Uplan Land Use Model

UPlan History and Applications

1. UPlan Development and Funding
2. UPlan's Objectives and Uses

How Model Allocates New Growth

1. Cells
2. Attractions
3. Discouragements
4. Weighting
5. Buffers
6. Masks

Kern COG Methodology

SB375 Modeling & Target Setting

1. Kern County Climate Change Task Force

Land Use Model Method

1. Kern COG SB375 Model Chart
 - 1). Planners & Public Outreach
 - 2). UPlan
 - 3). CUBE
 - 4).EMFAC

Basic Rules UPlan Operates By

Creating Scenarios

1. Technical Tools
 - 1). Existing Models
 - 2). New Model Development
2. Current Trends – Business As Usual
3. Alternative Scenarios

Data Input Parameters

1. Data
 - 1). Base Years
2. Matrixes
 - 1). Population Matrix
 - 2). Employment Matrix

Geographic Parameters

1. Draft Sub-Regional GHG Targets
2. Subareas
3. Model Outputs

Technical Appendix

EXECUTIVE SUMMARY

SB 375 SUMMARY OF REQUIREMENTS

Municipal Planning Organizations “MPO” are required to prepare a Sustainable Communities Strategy as a part of the Regional Transportation Plan “RTP”. The SCS must meet the emission targets set for each MPO by the Air Resources Board for the years 2020 and 2035.

The purpose of the SCS is to reduce vehicle emissions from light-duty trucks and passenger vehicles by improvements in Land Use and Transportation planning.

The targets for Kern Council of Governments “Kern COG” the MPO for the County of Kern are 5% reduction by 2020 and 10% reduction by 2035. These targets are planned for review by ARB in 2012.

MODEL DEVELOPMENT

LAND USE AND TRANSPORTATION MODEL DEVELOPMENT

Kern COG has adapted the same methodology used in the Blueprint process for land use modeling based on the UPlan modeling software developed by UC Davis.

Model parameters, assumptions, inputs, and reference information such as General Plans have been provided by Kern COG’s member agencies. The Kern COG Transportation Modeling Committee and other stakeholders have provided input and oversight to the development of the model. The original spreadsheet based land use model will continue to be developed and supported.

Kern COG is using its existing Cube transportation model validated in 2006. It was enhanced in 2010 to include the 4D’s, and modified to run in Cube Voyager.

INTEGRATED LAND USE AND TRANSPORTATION MODEL DEVELOPMENT

Kern COG has developed a procedure that allows the output from the Land Use model to become the input for the transportation model. Evaluation and testing of the new CubeLand integrated land use and transportation model is underway.

TECHNICAL METHODOLOGY

Kern COG intends to use the UPlan/Cube modeling platform to develop the many scenarios required for the development and adoption of the Sustainable Communities Strategy and Alternative Planning Strategy. Kern COG further intends to consult with member agencies, stakeholders, other MPO’s and ARB as part of the SCS development process.

UPLAN PROGRAM OBJECTIVES AND METHODOLOGY

SB 375 BACKGROUND

Achieve GHG Emission Reduction Target Through SCS

Integrate Regional Planning for Transportation, Land Use, and Housing

Full and Open Participation

UPLAN HISTORY AND APPLICATIONS

UPLAN DEVELOPMENT AND FUNDING

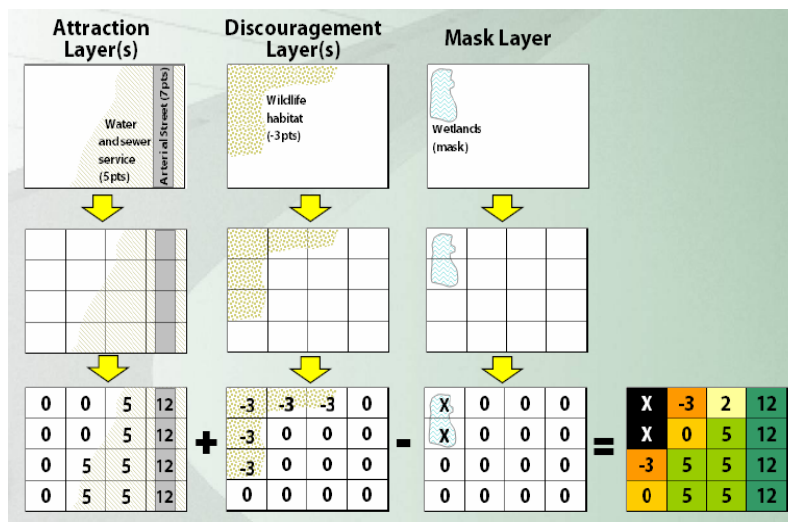
Developed at Information Center for the Environment at UC Davis

Funding received for development originates from several government agencies, including the California Department of Transportation and the California Energy Commission.

UPLAN'S OBJECTIVES AND USES

"UPlan was designed to help regions study the interactive effects of growth and development by projecting future land use patterns. It shows how decisions made today are most likely to impact the region decades into the future." (ShastaFORWARD)

HOW MODEL ALLOCATES NEW GROWTH

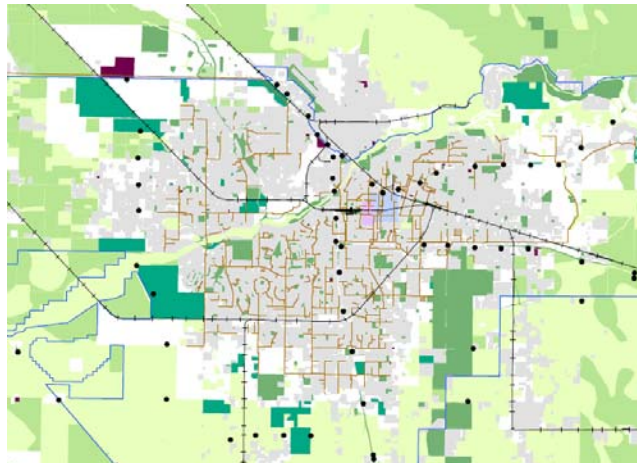


CELLS

UPlan functions by dividing land into “cells”, not parcels or TAZs. These cells are equal in size and can only contain one type of future planned growth, although hybrid types can be created to consolidate other types, such as the “Mixed Use” type, showing both residential and commercial growth. Kern’s model has 50 by 50 meter cells.

ATTRACTIONS

An attraction could be any number of things that would promote future growth in that particular region, such as availability of electricity, water, sewer, and road infrastructure. Attractions can also be non-physical things, such as political boundaries or tax incentives. An attraction will draw the allocation of growth to it, in other words, cells with attractions will have growth allocated to them before cells without.



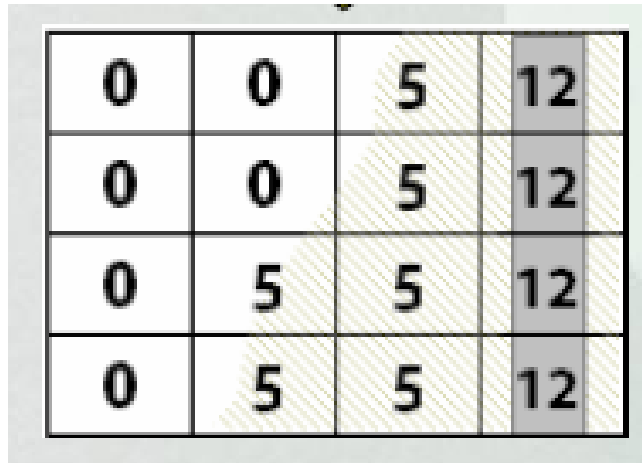
DISCOURAGEMENTS

A discouragement is the opposite of an attraction; an undesirable feature of a place where future development may take place, such as sandy soil. A discouragement does not prevent growth, although it will stop allocation of it until all other areas of that type are allocated. A discouragement represents an area that would cost more to develop or one that wouldn't have good attributes.

Kern's Land Use Model does not use discouragements

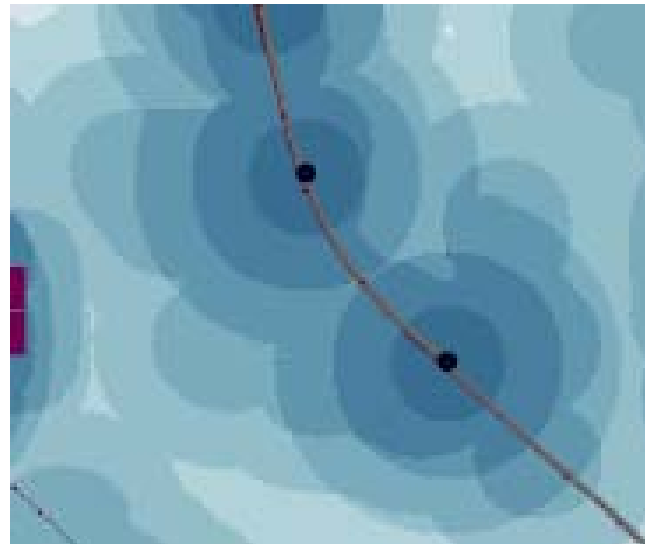
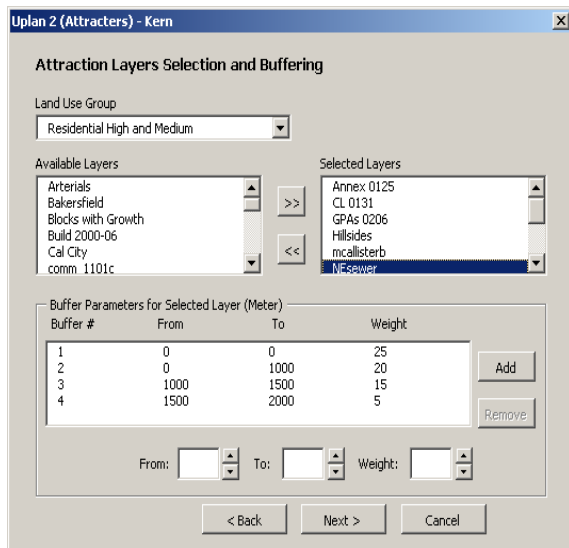
WEIGHTING

Weighting is how UPlan balances attractions and discouragements, as well as how the user can determine how much an attractor will attract growth and how much a discouragement will repel it. For example, if a cell has both an attractor and a discouragement, the values of them can be thought as positive and negative values, respectively. If the cell has an attractor with a weight of ten and a discourager with a weight of five, the total value of the cell will be $10 - 5 = 5$, so the cell will still have an attractive value to it. An example of the usefulness of weighting something would be the absolute need for industrial areas to develop with a water supply, thus any water layers would have a very high attraction weight to them for industrial growth.



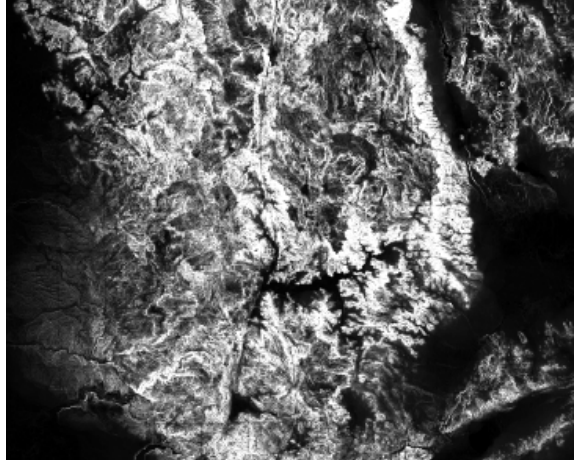
BUFFERS

Attractions or discouragements may be surrounded by a user defined sphere of coordinates or ‘buffer’. The user decides the number and width of the buffers. The highest attraction or discouragement values are given to buffers that have the greatest proximity to the feature. A buffer could be used in the situation of a freeway interchange and commercial growth. Clearly, businesses will wish to be closest to the freeway in order to obtain more costumers, so areas closest the freeway should be modeled with the highest attraction value, with areas further away slowly decreasing in value relative to the distance from the freeway. Below is a screen shot showing an example of the input parameters for a buffer and a screenshot showing the accumulated buffers the model will use as the attraction for each of the land use types.



MASKS

A mask is effectively an infinite discouragement, preventing all growth in that particular cell, even if all other cells have been assigned growth and unassigned growth still remains. A good candidate for a mask in UPlan would be lakes or cliffs where growth would be (by today’s economic and technological standards) improbable.



KERN COG METHODOLOGY

SB 375 MODELING AND TARGET SETTING

KERN COUNTY CLIMATE CHANGE TASK FORCE

Objective:

To assist Kern COG and its member agencies to meet the goals and objectives of Senate Bill No. 375 (SB 375) within the required time frame.

While it is months away until the draft targets will be known, Kern COG has recognized the need to begin the daunting task of coordinating the regional planning, housing, and transportation planning processes into a strategy to meet the intention of the Legislation. This will be an evolving process as regions throughout the state work together to establish and understand the targets, educate stakeholders and decision makers, define the Sustainable Community Strategy, understand the transportation funding implications as well as the housing projections.

For the purposes of outlining the COG's effort in compliance with the Legislation and how Kern COG's consulting efforts may assist, we have broken the efforts into three consecutive steps. Within each step, there are three components: education, technical, and strategy.

The tasks outlined below are efforts we anticipate the COG to undertake ***with assistance and guidance from consulting services as needed.***

Phase 1: Positioning the COG to participate in the SB 375 implementation process. This part would begin now and would continue until CARB RTAC releases the draft GHG emission reduction target setting methodology. The purpose of this effort is ultimately to position the COG to be prepared to carry out the SB 375 requirements. *Timeline: Now to September 30, 2009.*

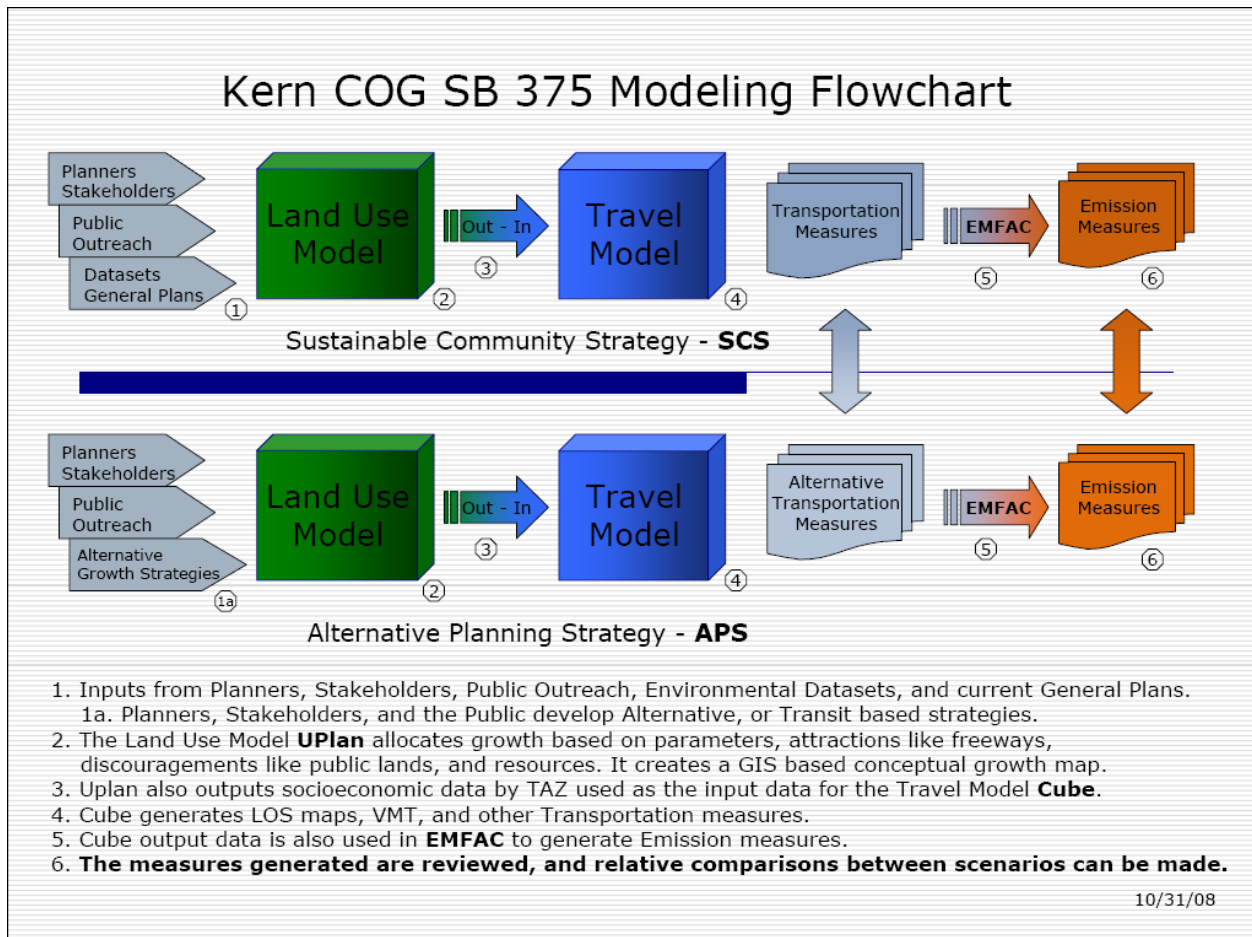
Phase 2: Preparing the structure to meet the targets. This period begins once CARB RTAC releases the target setting methodology to the COG. *Timeline: October 1, 2009 to September 30, 2010.*

Phase 3: Complying with SB 375. This period begins once the Regional targets are final and accepted and the COG must prepare the RTP, the SCS, and the RHNA. *Timeline: October 1, 2010 to adoption of the RTP and RHNA.*

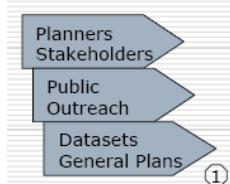
LAND USE MODEL METHOD

KERN COG SB375 MODEL

- U Developed from Blueprint Processed Modeling
- Based on GIS based UPlan land use model
- Use existing CUBE transportation model



Planners & Public Information



The planners provide information about their forecasts and predictions using the spreadsheet model, public agencies provide general plans, and private stakeholders provide information on forthcoming developments. A

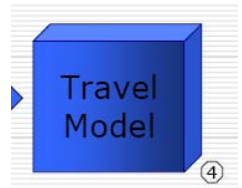
public outreach program is also conducted to better predict public opinion on future growth. This information is compiled and put into a matrix for the UPlan Land Use input.

UPlan Land Use Model



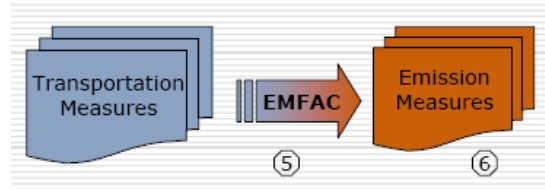
The UPlan model, as described earlier, takes this information and predicts where new growth will be allocated, this information is then inputted to the Cube Travel Model.

Cube Travel Model



The Cube Travel Model then takes this information and calculates VMT (Vehicle Miles Traveled); this provides input for the EMFAC.

EMFAC Conversion



EMFAC takes the Transportation Measures from Cube and calculates the carbon emissions.

BASIC RULES UPLAN OPERATES BY

People take up space

People live in groups known as Households

Different household types take up different amounts of space

Some portion of each household is employed

Different forms of employment require different amounts of space

Each residential type has attributes that attract or discourage growth

Each employment type has attributes that attract or discourage growth

Some things block all growth (i.e. a lake)

The general plan determines where future growth will occur and what type it will be

Growth will happen in the areas with the most attractions first, then the next most attractive, then the third most attractive, and so on.

CREATING SCENARIOS

TECHNICAL TOOLS

Existing Models

- Socioeconomic Growth Forecasts
- Trip-based travel demand model
- 4-D technical tool (intra-zonal travel demand)
- Emissions model (ARB's EMFAC Model)

New Model Development

- Land Use Model (UPlan)
- San Joaquin Valley MPO's Model Improvement Program "MIP" is in progress
- Cubeland integrated Land Use and Transportation model is in development

CURRENT TRENDS – BUSINESS AS USUAL

Current trends represent are the input parameters for what is "business as usual" without any major change, based on historic growth rates and "normal" planning methodologies.

ALTERNATIVE SCENARIOS

The alternative scenario is the "what if" part of the model. These scenarios are where planners can see what may happen in various hypothetical situations, which can be used to find a Sustainable Community Strategy.

ASSUMPTIONS

DATA

Base Years – 2005(2010), 2020, 2035

Census

Population

Employment

Existing Land Use

Existing Zoning

General Plans

Additional Blueprint Projects

Base Year Transportation Inventories

Baseline Transportation Inventories

MATRIXES (SPEARDSHEET BASED WORKSHEETS)

Population Matrix

5 Population Categories – (Consolidated from county and cities individual general plans)

High Density Residential

Medium Density Residential

Low Density Residential

Very Low Density Residential

Mixed Use (Residential & Industrial)

Demographic Reference Information:

Population – Kern Adopted Population Growth Tables

People per household

Future population

Employees per household

Employment Matrix

6 Employment Categories – (See previous definition on population categories)

BASIC – Basic Employment

RHRET – Retail High

RMRET – Retail Medium

RETSER – Retail Service

SOSER – Service Other

BWOTH – Basic Warehouse

GEOGRAPHIC PARAMETERS

DRAFT SUB-REGIONAL GHG TARGETS

Develop Draft Sub-regional Targets to meet Regional Target

Flexibility within Sub-region on SCS

Possible Joint Sub-regional SCS

KCOG Assistance to Sub-regions Where Necessary

Finalize Based on Regional Dialogue

SUBAREAS

Subarea #1 – Westside Kern – Major cities include Taft & Maricopa

Subarea #2 – Delano/McFarland

Subarea #3 – Wasco

Subarea #4 – Tehachapi/Frazier

Subarea #5 – Metro – Major cities include Bakersfield, Shafter, & Arvin

Subarea #6 – Southeast Kern – Major cities include Cal City, Mojave, & Rosamond

Subarea #7 – Lake Isabella

Subarea #8 – Indian Wells – Major cities include Ridgecrest & Inyokern

LAYERS

TAZ – Traffic Analysis Zones

Sub Areas – Consolidation of TAZs that the model uses

Extent – Kern County Lines

Cities General Plans

Slope – (sometimes as a mask)

Attractors (no discouragers are used for Kern's application)

Masks – (such as existing urban)

MODEL OUTPUTS

Final Allocation (All land use types)

Final Attraction Layer

Datasets output (spreadsheet.dbf)

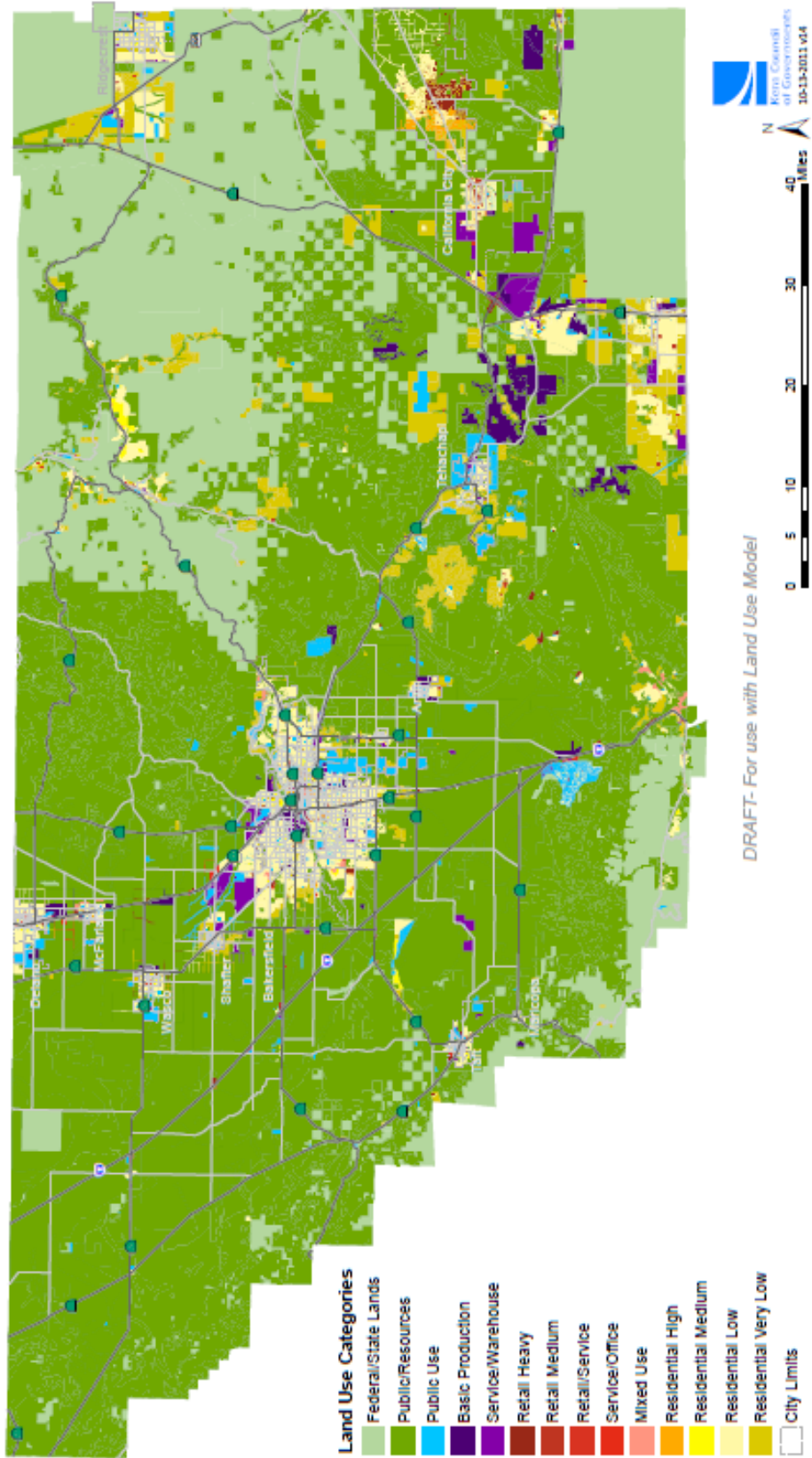
- Allocation Stats
- Land Consumption (see Appendix B)
- Results by TAZ
- TAZ export to socio-economic spreadsheet (used for travel model)

Technical Appendix

Appendix A

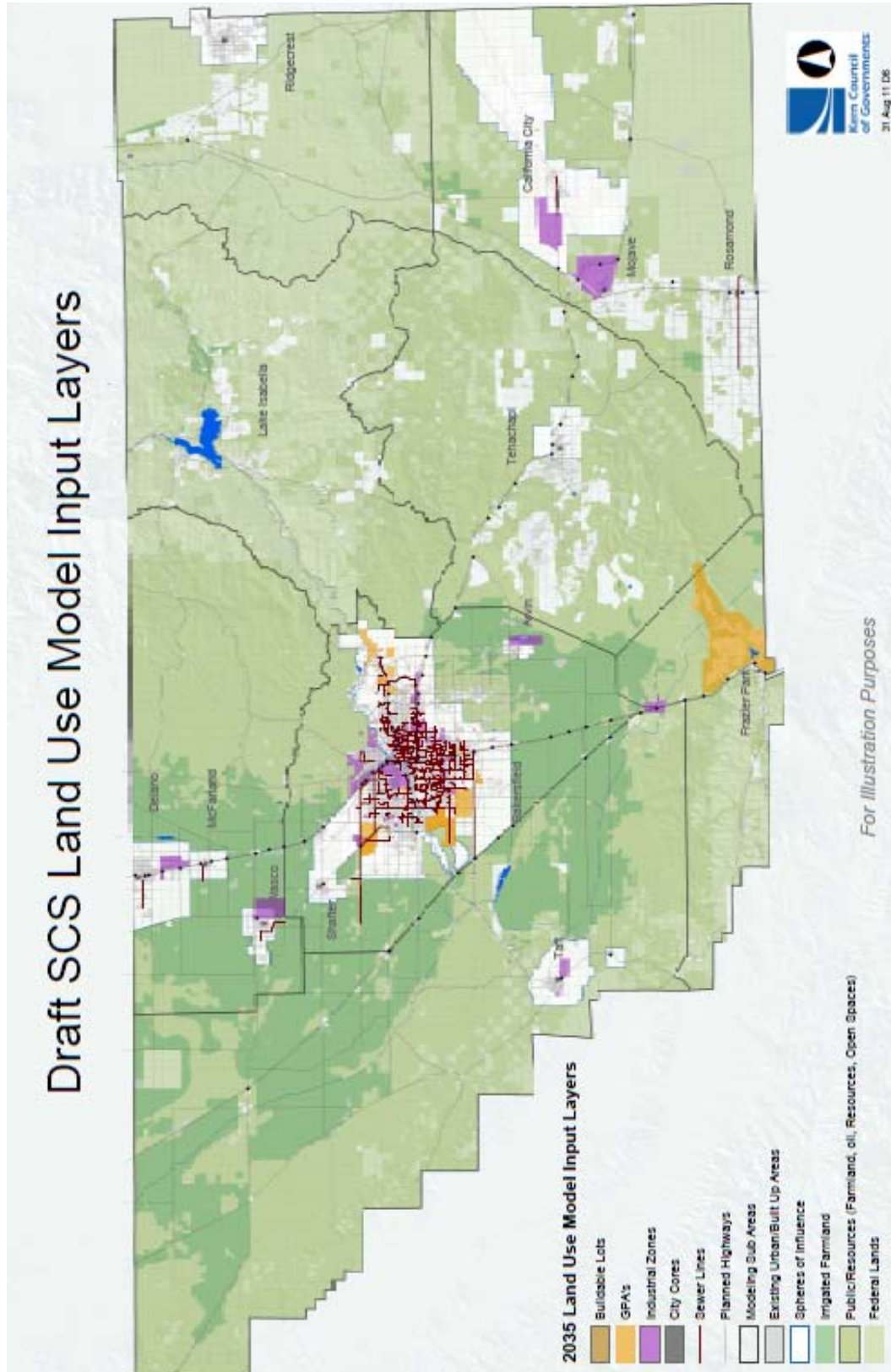
Combined Land Use Map – (13B)

DRAFT Kern County Region - Combined Land Use Model Input Layer



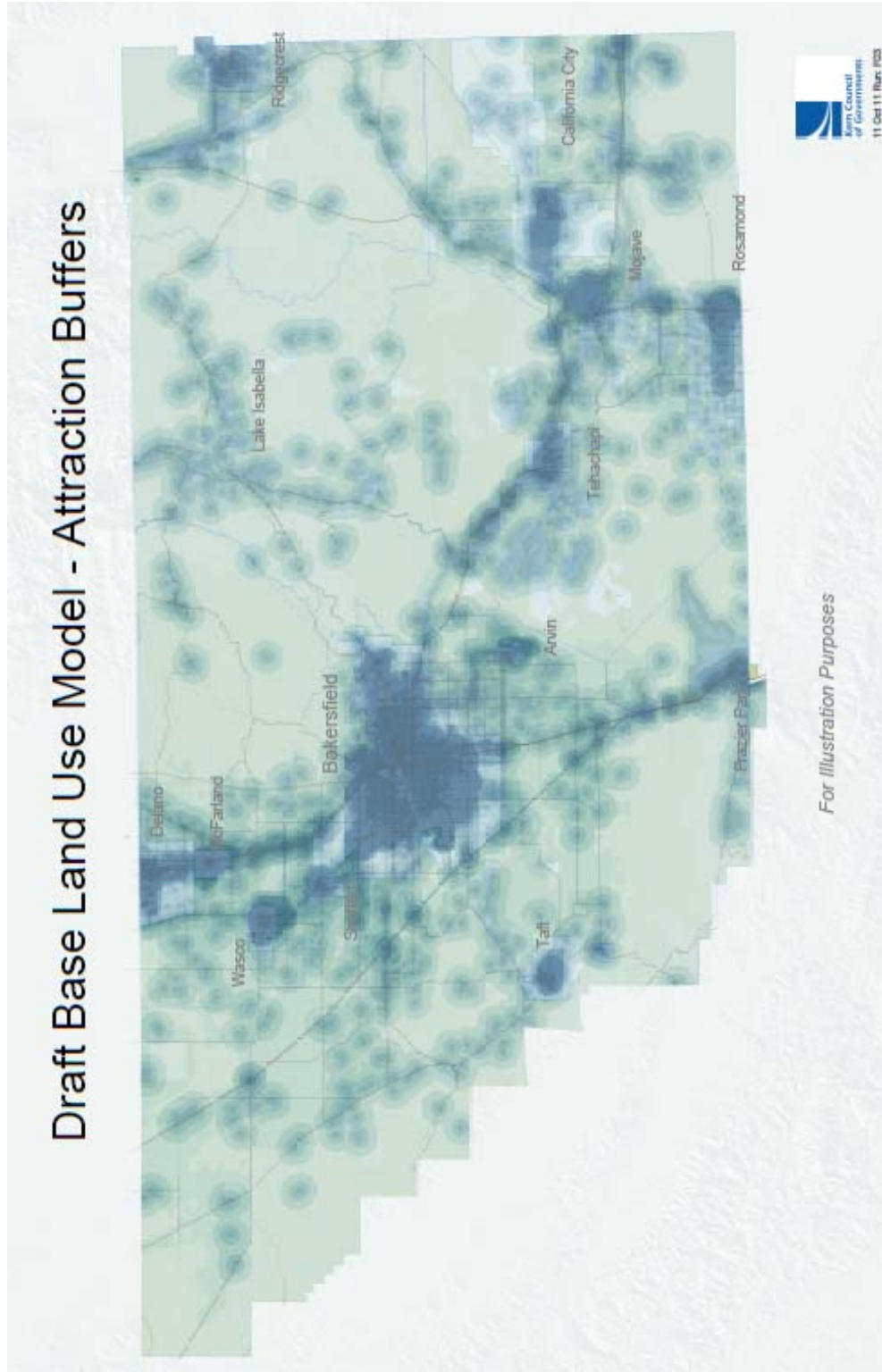
Appendix B

Land Use Model Attraction Layers



Appendix C

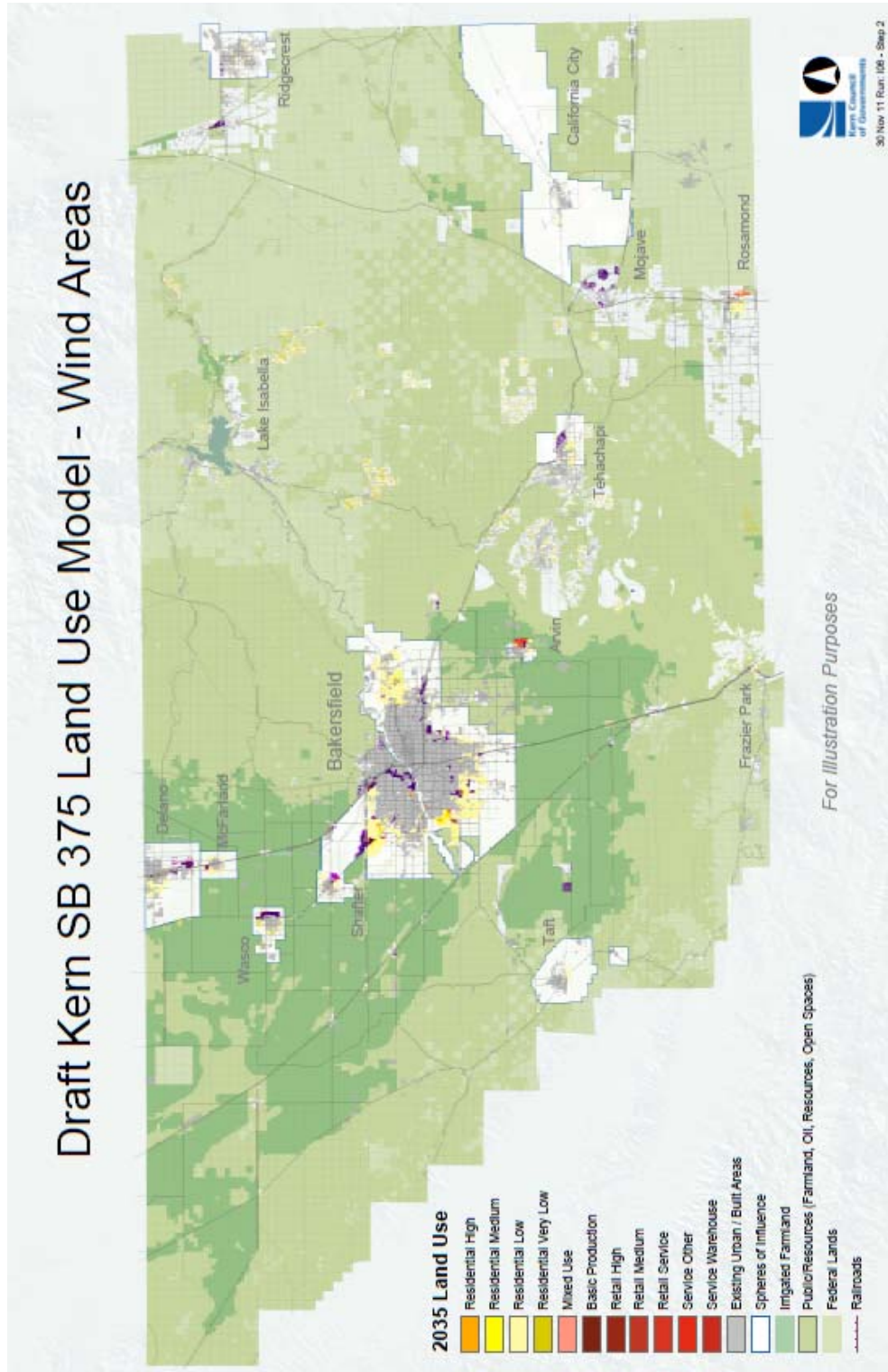
Accumulated Attraction Buffers



Appendix D

Sample Land Use Model Output Map

Draft Kern SB 375 Land Use Model - Wind Areas



Appendix F

Sample Uplan Output – Land Consumption

Acres Consumed by Model Sub Area

Subareas

1. Westside Kern
2. North Central Kern
3. Frazier Park
4. Tehachapi
5. Metro Bakersfield
6. Southeast Kern
7. Lake Isabella
8. Indian Wells

Sub Area	RH Acres	RM Acres	RL Acres	RVL Acres	IN Acres	CH Acres	CL Acres
1	80	122	931	14	93	227	0
2	421	639	4870	75	3365	380	4
3	86	132	926	1548	335	83	0
4	144	200	1377	10424	495	347	0
5	6221	10816	38342	1767	14806	869	15644
6	282	393	3718	54	9231	503	0
7	56	85	644	10	0	32	0
8	143	216	1647	25	23	0	0
	7433	12603	52455	13917	28348	2441	15648
				86408			

Acres Consumed by Model Scenario

Scenario	RH	RM	RL	RVL	Total Ag Presv
Major	26,488	56.3%	56.31%	10,618	22.57%
Moderate	11,661	16.2%	16.21%	17,492	24.32%
Some	7,433	8.6%	8.60%	12,603	14.59%
No	2,035	2.0%	1.98%	5,968	5.80%
	47,617		46,681		
	2500		0.61776		

Appendix G
Draft Combined Land Use Map (Attachment A)
Conversion Matrix Table

Combined Land Use - General Plan Conversion Matrix Table								
								10/11/2011
Uplan Abbreviation	Uplan Description	Jurisdiction Maximum Dwelling Units /Gross Acre	Jurisdiction Average Dwelling Units /Gross Acre	Model Average Dwelling Units /Gross Acre	Model Gross Acre /Household	Typical Jobs /Gross Acre	Model Floor Area Ratio	Model Average Sq. Footage
RH	Residential High Density	18 to 73	15	12.5	0.08	0	0	0
RM	Residential Medium Density	11 to 17	8 to 10	8.3	0.12	0	0	0
RL	Residential Low Density	2 to 10	2 to 7	4	0.25	0	0	0
RVL	Residential Very Low Density	0.05 to 1	0.05 to 1	0.2	5	0	0	0
UR	Urban Reserve	18 to 73	15	4	0.08	11 to 17	0.25	269
MU	Mixed Use	18 to 73	15	4	0.08	11 to 17	0.25	269
RSC	Resources	0	0	0	0	0	0	0
BP	Basic/Production	0	0	0	0	6 to 13	0.16	1361
REH	Retail/Heavy	0	0	0	0	11 to 17	0.25	269
REM	Retail/Medium	0	0	0	0	17	0.25	269
RS	Retail/Service	0	0	0	0	34	0.25	269
SO	Service/Office	0	0	0	0	26	0.25	837
SW	Service/Warehouse	0	0	0	0	14	0.25	837
PU	Public Use	0	0	0	0	0	0	0
Fed/St	Federal/State	0	0	0	0	0	0	0
SOURCE: Southern California Association of Governments, Rates for Riverside, San Bernardino and Imperial Counties, 2001								

Jurisdiction	General Plan Code	General Plan Description	Uplan Code	Uplan Description	SUBREGION
Arvin	AG	Agriculture	RSC	Resources	Metro Bakersfield Area
Arvin	ER	Estate Residential	RVL	Residential Very Low Density	Metro Bakersfield Area
Arvin	GC	General Commercial	REH	Retail/Heavy	Metro Bakersfield Area
Arvin	HDR	High Density Residential	RH	Residential High Density	Metro Bakersfield Area
Arvin	HI	Heavy Industrial	BP	Basic/Production	Metro Bakersfield Area
Arvin	LDR	Low Density Residential	RL	Residential Low Density	Metro Bakersfield Area
Arvin	LI	Light Industrial	BP	Basic/Production	Metro Bakersfield Area
Arvin	PARK	Park	PU	Public Use	Metro Bakersfield Area
Arvin	PF	Public Facilities	PU	Public Use	Metro Bakersfield Area
Arvin	PUD	Planned unit development	MU	Mixed Use	Metro Bakersfield Area
Arvin	SCHOOL	School	PU	Public Use	Metro Bakersfield Area

Jurisdiction	General Plan Code	General Plan Description	Upland Code	Upland Description	SUBREGION
Bakersfield	LR	Low Density Residential	RL	Residential Low Density	Metro Bakersfield Area
Bakersfield	R-EA	Extensive Agriculture- minimum 80-acre parcel size for lands under "Williamson Act" contract; 20-acre minimum, lands not under contract	RSC	Resources	Metro Bakersfield Area
Bakersfield	ER	Estate-min. 1 net acre/unit	RVL	Residential Very Low Density	Metro Bakersfield Area
Bakersfield	GC	General- max. 1.0 FAR, 4 stories	REH	Retail/Heavy	Metro Bakersfield Area
Bakersfield	HC	Highway-max .4 FAR***3 stories	REH	Retail/Heavy	Lake Isabella
Bakersfield	HC	Highway-max .4 FAR***3 stories	REH	Retail/Heavy	Metro Bakersfield Area
Bakersfield	HI	Heavy Industrial- .4 FAR, 14 stories	BP	Basic/Production	Metro Bakersfield Area
Bakersfield	HMR	High Medium Density Res- greater than 7.26 and less than or equal to 17.42 dwelling units/net acre; County-less than or equal to 17.42 dwelling units/net acre	RM	Residential Medium Density	Metro Bakersfield Area
Bakersfield	HR	High Density- City-greater than 17.42 and less than or equal to 72.6 dwelling units/net acre; County-less than or equal to 29 dwelling units/net acre	RH	Residential High Density	Metro Bakersfield Area
Bakersfield	LI	Light Industrial- 1.0 FAR, 6 stories	BP	Basic/Production	Metro Bakersfield Area
Bakersfield	LMR	Low Medium Density- City-greater than 4.0 and less than or equal to 10.0 dwelling units/net acre; County-less than or equal to 10 dwelling units/net acre	RL	Residential Low Density	Metro Bakersfield Area
Bakersfield	LMR/LR	Low Medium Density- City-greater than 4.0 and less than or equal to 10.0 dwelling units/net acre; County-less than or equal to 10 dwelling units/net acre Low Density- less than or equal to 7.26 dwelling units/net acre	RL	Residential Low Density	Lake Isabella
Bakersfield	LMR/LR	Low Medium Density- City-greater than 4.0 and less than or equal to 10.0 dwelling units/net acre; County-less than or equal to 10 dwelling units/net acre Low Density- less than or equal to 7.26 dwelling units/net acre	RL	Residential Low Density	Metro Bakersfield Area
Bakersfield	LR	Low Density- less than or equal to 7.26 dwelling units/net acre	RL	Residential Low Density	Metro Bakersfield Area
Bakersfield	LR/PS	Low Density- less than or equal to 7.26 dwelling units/net acre Public and private schools	RL	Residential Low Density	Metro Bakersfield Area
Bakersfield	MC	Major Commercial- max 1.0 FAR, 6 stories	REH	Retail/Heavy	Metro Bakersfield Area
Bakersfield	MUC	Mixed Use- max 3.0 FAR	MU	Mixed Use	Metro Bakersfield Area
Bakersfield	OC	Office Commercial- max 1.0 FAR, 4 stories	RES	Retail/Service	Metro Bakersfield Area
Bakersfield	OS	Open Space- Floodplains and Resource Management	RSC	Resources	Lake Isabella
Bakersfield	OS	Open Space- Floodplains and Resource Management	RSC	Resources	Metro Bakersfield Area
Bakersfield	OS-P	Parks- Includes all city and county parks as as public and private recreation facilities	PU	Public Use	Metro Bakersfield Area

Bakersfield	OS-S	Parks- Includes all city and county parks as as public and private recreation facilities	PU	Public Use	Lake Isabella
Bakersfield	OS-S	Parks- Includes all city and county parks as as public and private recreation facilities	PU	Public Use	Metro Bakersfield Area
Bakersfield	OTHER JURIS	Bakersfield	MU	Mixed Use	Lake Isabella
Bakersfield	OTHER JURIS	Bakersfield	MU	Mixed Use	Metro Bakersfield Area
Bakersfield	P	Public Facilites	PU	Public Use	Metro Bakersfield Area
Bakersfield	P-SW	Solid Waste Facility Sites	PU	Public Use	Metro Bakersfield Area
Bakersfield	PS	Public and Private Schools	PU	Public Use	Metro Bakersfield Area
Bakersfield	PT	Public Transportation	PU	Public Use	Lake Isabella
Bakersfield	PT	Public Transportation	PU	Public Use	Metro Bakersfield Area
Bakersfield	R- EA	Extensive Agriculture- minimum 80-acre parcel size for lands under "Williamson Act" contract; 20-acre minimum, lands not under contract	RSC	Resources	Lake Isabella
Bakersfield	R- EA	Extensive Agriculture- minimum 80-acre parcel size for lands under "Williamson Act" contract; 20-acre minimum, lands not under contract	RSC	Resources	Metro Bakersfield Area
Bakersfield	R-IA	Intensive Agriculture- min. 20-acres parcel size	RSC	Resources	Lake Isabella
Bakersfield	R-IA	Intensive Agriculture- min. 20-acres parcel size	RSC	Resources	Metro Bakersfield Area
Bakersfield	R-MP	Mineral and Petroleum- min. land use designation size 5-acres	RSC	Resources	Lake Isabella
Bakersfield	R-MP	Mineral and Petroleum- min. land use designation size 5-acres	RSC	Resources	Metro Bakersfield Area
Bakersfield	RR	Rural- min. 2.5 gross acres/unit	RL	Residential Low Density	Metro Bakersfield Area
Bakersfield	SEWER	Bakersfield	PU	Public Use	Metro Bakersfield Area
Bakersfield	SI	Service Industrial- .4 FAR, 6 stories	SW	Service/Wharehouse	Metro Bakersfield Area
Bakersfield	SR	Suburban Residential- less than or equal to 4 dwelling units/net acre	RL	Residential Low Density	Metro Bakersfield Area
Bakersfield	SR/LR	Suburban Residential- less than or equal to 4 dwelling units/net acre Low Density- less than or equal to 7.26 dwelling units/net acre	RL	Residential Low Density	Metro Bakersfield Area
Bakersfield	UER	Estate Residential	RL	Residential Low Density	Metro Bakersfield Area
Bakersfield	WM-GC	General Commercial	REH	Retail/Heavy	Metro Bakersfield Area
Bakersfield	WM-HMR	High Medium Residential	RM	Residential Medium Density	Metro Bakersfield Area
Bakersfield	WM-HR	High Residential	RH	Residential High Density	Metro Bakersfield Area
Bakersfield	WM-LMR	Low Medium Residential	RL	Residential Low Density	Metro Bakersfield Area
Bakersfield	WM-LR	Low Residential	RL	Residential Low Density	Metro Bakersfield Area
Bakersfield	WM-MU	Mixed Use	MU	Mixed Use	Metro Bakersfield Area
Bakersfield	WM-OC	Office Commercial	RES	Retail/Service	Metro Bakersfield Area
Bakersfield	WM-SU	Mixed Use	MU	Mixed Use	Metro Bakersfield Area

Kern River Plan	1.2	Incorporated Cities	MU	Mixed Use	Metro Bakersfield Area
Kern River Plan	3.1	Public or Private Recreation Areas	PU	Public Use	Metro Bakersfield Area
Kern River Plan	3.1	Public or Private Recreation Areas	PU	Public Use	Metro Bakersfield Area
Kern River Plan	3.1	Public or Private Recreation Areas	PU	Public Use	Metro Bakersfield Area
Kern River Plan	3.3	Other Public Facilities	PU	Public Use	Metro Bakersfield Area
Kern River Plan	3.3	Other Public Facilities	PU	Public Use	Metro Bakersfield Area
Kern River Plan	4.3	Specific Plan Required	MU	Mixed Use	Metro Bakersfield Area
Kern River Plan	4.3	Specific Plan Required	MU	Mixed Use	Metro Bakersfield Area
Kern River Plan	4.3	Specific Plan Required	MU	Mixed Use	Metro Bakersfield Area
Kern River Plan	5.2	Maximum 16 Units/Net Acre	RM	Residential Medium Density	Metro Bakersfield Area
Kern River Plan	5.3	Maximum 10 Units/Net Acre	RL	Residential Low Density	Metro Bakersfield Area
Kern River Plan	5.35	Maximum 7.25 Units/Net Acre	RL	Residential Low Density	Metro Bakersfield Area
Kern River Plan	5.35	Maximum 7.25 Units/Net Acre	RL	Residential Low Density	Metro Bakersfield Area
Kern River Plan	5.35	Maximum 7.25 Units/Net Acre	RL	Residential Low Density	Metro Bakersfield Area
Kern River Plan	5.4	Maximum 4 Units/Net Acre	RL	Residential Low Density	Metro Bakersfield Area
Kern River Plan	5.4	Maximum 4 Units/Net Acre	RL	Residential Low Density	Metro Bakersfield Area
Kern River Plan	5.5	Maximum 1 Unit/Net Acre	RVL	Residential Very Low Density	Metro Bakersfield Area
Kern River Plan	5.6	Minimum 2.5 Gross Acres/Unit	RVL	Residential Very Low Density	Metro Bakersfield Area
Kern River Plan	5.6	Minimum 2.5 Gross Acres/Unit	RVL	Residential Very Low Density	Metro Bakersfield Area
Kern River Plan	5.6	Minimum 2.5 Gross Acres/Unit	RVL	Residential Very Low Density	Metro Bakersfield Area
Kern River Plan	5.7	Minimum 5 Gross Acres/Unit	RVL	Residential Very Low Density	Metro Bakersfield Area
Kern River Plan	5.7	Minimum 5 Gross Acres/Unit	RVL	Residential Very Low Density	Metro Bakersfield Area
Kern River Plan	6.1	Major Commercial	REH	Retail Employment High	Metro Bakersfield Area
Kern River Plan	6.2	General Commercial	REM	Retail/Medium	Metro Bakersfield Area
Kern River Plan	6.2	General Commercial	REM	Retail/Medium	Metro Bakersfield Area
Kern River Plan	6.25	General Commercial	RES	Retail/Service	Metro Bakersfield Area
Kern River Plan	6.3	Highway Commercial	REH	Retail Employment High	Metro Bakersfield Area
Kern River Plan	7.1	Light Industrial	BP	Basic Production	Metro Bakersfield Area
Kern River Plan	7.1	Light Industrial	BP	Basic Production	Metro Bakersfield Area
Kern River Plan	7.1	Light Industrial	BP	Basic Production	Metro Bakersfield Area
Kern River Plan	7.2	Service Industrial	SW	Service/Warehouse	Metro Bakersfield Area
Kern River Plan	7.2	Service Industrial	SW	Service/Warehouse	Metro Bakersfield Area
Kern River Plan	7.2	Service Industrial	SW	Service/Warehouse	Metro Bakersfield Area
Kern River Plan	7.3	Heavy Industrial	BP	Basic Production	Metro Bakersfield Area

Kern River Plan		7.3 Heavy Industrial	BP	Basic Production	Metro Bakersfield Area
Kern River Plan		8.1 Intensive Agriculture (Min. 20 Acre Parcel Size)	RSC	Resources	Metro Bakersfield Area
Kern River Plan		8.1 Intensive agriculture (min. 20 acre parcel size)	RSC	Resources	Metro Bakersfield Area
Kern River Plan		8.4 Mineral and Petroleum (Min. 5 Acre Parcel Size)	RSC	Resources	Metro Bakersfield Area
Kern River Plan		8.4 Mineral and Petroleum (Min. 5 Acre Parcel Size)	RSC	Resources	Metro Bakersfield Area
Kern River Plan		8.4 Mineral and Petroleum (Min. 5 Acre Parcel Size)	RSC	Resources	Metro Bakersfield Area
Kern River Plan		8.5 Resource Management (Min. 20 Acre Parcel Size)	RSC	Resources	Metro Bakersfield Area
Kern River Plan		8.5 Resource Management (Min. 20 Acre Parcel Size)	RSC	Resources	Metro Bakersfield Area
Kern River Plan		8.5 Resource Management (Min. 20 Acre Parcel Size)	RSC	Resources	Metro Bakersfield Area
Metropolitan Bakersfield	ER	Estate Residential	RVL	Residential Very Low Density	Metro Bakersfield Area
Metropolitan Bakersfield	GC	General Commercial	REH	Retail/Heavy	Metro Bakersfield Area
Metropolitan Bakersfield	HC	Highway Commercial	REH	Retail/Heavy	Metro Bakersfield Area
Metropolitan Bakersfield	LI	Light Industrial	BP	Basic/Production	Metro Bakersfield Area
Metropolitan Bakersfield	LMR	Low Medium Density Residential	RL	Residential Low Density	Metro Bakersfield Area
Metropolitan Bakersfield	OS	Open Space - Includes Resource Management Areas, Agriculture, & Floodplains	RSC	Resources	Metro Bakersfield Area
Metropolitan Bakersfield	P	Publicly Owned Facilities	PU	Public Use	Metro Bakersfield Area
Metropolitan Bakersfield	PT	Public Transportation	PU	Public Use	Lake Isabella
Metropolitan Bakersfield	PT	Public Transportation	PU	Public Use	Metro Bakersfield Area
Metropolitan Bakersfield	R-EA	Extensive Agriculture	RSC	Resources	Lake Isabella
Metropolitan Bakersfield	R-EA	Extensive Agriculture	RSC	Resources	Metro Bakersfield Area
Metropolitan Bakersfield	R-IA	Intensive Agriculture	RSC	Resources	Lake Isabella
Metropolitan Bakersfield	R-IA	Intensive Agriculture	RSC	Resources	Metro Bakersfield Area
Metropolitan Bakersfield	R-MP	Mineral and Petroleum	RSC	Resources	Metro Bakersfield Area
Metropolitan Bakersfield	SI	Service Industrial	SW	Service/Warehouse	Metro Bakersfield Area
Metropolitan Bakersfield	SR	Suburban Residential	RL	Residential Low Density	Metro Bakersfield Area

Jurisdiction	General Plan Code	General Plan Description	Uplan Code	Uplan Description	SUBREGION
California City	commercial_office	CO	SO	Service/Office	Southeast Kern
California City	community_commercial	CC	REH	Retail/Heavy	Southeast Kern
California City	community_medical	CMC	RES	Retail/Service	Southeast Kern
California City	conservation_land	CL	RSC	Resources	Southeast Kern
California City	controlled_develop,public_parks,R*	CD	RSC	Resources	Southeast Kern
California City	estate_residential	Estate Residential	RVL	Residential Very Low Density	Southeast Kern
California City	estate_residential_wonderacres	Estate Residential - Wonderacres	RVL	Residential Very Low Density	Southeast Kern
California City	government_PF	Government	PU	Public Use	Southeast Kern
California City	heavy_industrial	HI	BP	Basic/Production	Southeast Kern
California City	high_density_residential	HDR	RH	Residential High Density	Southeast Kern
California City	light_industrial_research	Light Industrial - Research	BP	Basic/Production	Southeast Kern
California City	low_density_residential	LDR	RL	Residential Low Density	Southeast Kern
California City	medium_density_residential	MDR	RL	Residential Low Density	Southeast Kern
California City	medium_low_residential	MLR	RL	Residential Low Density	Southeast Kern
California City	neighborhood_commercial	NC	REH	Retail/Heavy	Southeast Kern
California City	regional_commercial	RC	PU	Public Use	Southeast Kern
California City	rural_density_residential	RDR	RVL	Residential Very Low Density	Southeast Kern
California City	service_commercial	SC	SO	Service/Office	Southeast Kern

Jurisdiction	General Plan Code	General Plan	Uplan Code	Uplan Description	SUBREGION
Delano	Agricultural	AG	RSC	Resources	Delano McFarland
Delano	Agricultural	AG	RSC	Resources	Wasco
Delano	Commercial	Commercial	REH	Retail/Heavy	Delano McFarland
Delano	Community Facilities	CF	PU	Public Use	Delano McFarland
Delano	Community Facilities	CF	PU	Public Use	Wasco
Delano	High Residential	HR	RH	Residential High Density	Delano McFarland
Delano	Industrial	I	BP	Basic/Production	Delano McFarland
Delano	Low Residential	LR	RL	Residential Low Density	Delano McFarland
Delano	Medium Residential	MR	RM	Residential Medium Density	Delano McFarland
Delano	Rural Residential	RR	RL	Residential Low Density	Delano McFarland
Delano	Rural Residential	RR	RL	Residential Low Density	Wasco
Delano	Service Commercial	SC	SO	Service/Office	Delano McFarland

Jurisdiction	General Plan Code	General Plan Description	Uplan Code	Uplan Description	SUBREGION
Kern	1.1	State or Federal Land	FED/ST	Federal/State Land	Delano McFarland
Kern	1.1	State or Federal Land	FED/ST	Federal/State Land	Indian Wells
Kern	1.1	State or Federal Land	FED/ST	Federal/State Land	Lake Isabella
Kern	1.1	State or Federal Land	FED/ST	Federal/State Land	Metro Bakersfield Area
Kern	1.1	State or Federal Land	FED/ST	Federal/State Land	Southeast Kern
Kern	1.1	State or Federal Land	FED/ST	Federal/State Land	Tehachapi Frazier Park
Kern	1.1	State or Federal Land	FED/ST	Federal/State Land	Wasco
Kern	1.1	State or Federal Land	FED/ST	Federal/State Land	West Kern
Kern	1.2	Incorporated Cities	MU	Mixed Use	Delano McFarland
Kern	1.2	Incorporated Cities	MU	Mixed Use	Indian Wells
Kern	1.2	Incorporated Cities	MU	Mixed Use	Metro Bakersfield Area
Kern	1.2	Incorporated Cities	MU	Mixed Use	Southeast Kern
Kern	1.2	Incorporated Cities	MU	Mixed Use	Tehachapi Frazier Park
Kern	1.2	Incorporated Cities	MU	Mixed Use	West Kern
Kern	3.1	Public or Private Recreation Areas	PU	Public Use	Delano McFarland
Kern	3.1	Public or Private Recreation Areas	PU	Public Use	Lake Isabella
Kern	3.1	Public or Private Recreation Areas	PU	Public Use	Metro Bakersfield Area
Kern	3.1	Public or Private Recreation Areas	PU	Public Use	Tehachapi Frazier Park
Kern	3.1	Public or Private Recreation Areas	PU	Public Use	West Kern
Kern	3.2	Educational Facilities	PU	Public Use	Lake Isabella
Kern	3.2	Educational Facilities	PU	Public Use	Metro Bakersfield Area
Kern	3.2	Educational Facilities	PU	Public Use	Tehachapi Frazier Park
Kern	3.3	Other Facilities	PU	Public Use	Indian Wells
Kern	3.3	Other Facilities	PU	Public Use	Lake Isabella
Kern	3.3	Other Facilities	PU	Public Use	Metro Bakersfield Area
Kern	3.3	Other Facilities	PU	Public Use	Southeast Kern
Kern	3.3	Other Facilities	PU	Public Use	Tehachapi Frazier Park
Kern	3.3	Other Facilities	PU	Public Use	Wasco
Kern	3.3	Other Facilities	PU	Public Use	West Kern
Kern	3.4	Solid Waste Facilities	PU	Public Use	Delano McFarland
Kern	3.4	Solid Waste Facilities	PU	Public Use	Indian Wells
Kern	3.4	Solid Waste Facilities	PU	Public Use	Lake Isabella
Kern	3.4	Solid Waste Facilities	PU	Public Use	Metro Bakersfield Area

Kern		3.4 Solid Waste Facilities	PU	Public Use	Southeast Kern
Kern		3.4 Solid Waste Facilities	PU	Public Use	Tehachapi Frazier Park
Kern		3.4 Solid Waste Facilities	PU	Public Use	Wasco
Kern		3.4 Solid Waste Facilities	PU	Public Use	West Kern
Kern	3.4.1	Solid Waste Disposal Facility Buffer	PU	Public Use	Lake Isabella
Kern	3.4.1	Solid Waste Disposal Facility Buffer	PU	Public Use	Tehachapi Frazier Park
Kern	3.4.1	Solid Waste Disposal Facility Buffer	PU	Public Use	Wasco
Kern		3.7 Other Waste Facilities - Nonhazardous/Nondisposal	PU	Public Use	Lake Isabella
Kern		3.7 Other Waste Facilities - Nonhazardous/Nondisposal	PU	Public Use	Tehachapi Frazier Park
Kern		5.1 Maximum 29 Units/Net Acre	RH	Residential High Density	Lake Isabella
Kern		5.2 Maximum 16 Units/Net Acre	RM	Residential Medium Density	Indian Wells
Kern		5.2 Maximum 16 Units/Net Acre	RM	Residential Medium Density	Lake Isabella
Kern		5.2 Maximum 16 Units/Net Acre	RM	Residential Medium Density	Tehachapi Frazier Park
Kern		5.3 Maximum 10 Units/Net Acre	RL	Residential Low Density	Lake Isabella
Kern		5.3 Maximum 10 Units/Net Acre	RL	Residential Low Density	Metro Bakersfield Area
Kern		5.3 Maximum 10 Units/Net Acre	RL	Residential Low Density	Tehachapi Frazier Park
Kern		5.3 Maximum 10 Units/Net Acre	RL	Residential Low Density	West Kern
Kern		5.4 Maximum 4 Units/Net Acre	RL	Residential Low Density	Indian Wells
Kern		5.4 Maximum 4 Units/Net Acre	RL	Residential Low Density	Lake Isabella
Kern		5.4 Maximum 4 Units/Net Acre	RL	Residential Low Density	Metro Bakersfield Area
Kern		5.4 Maximum 4 Units/Net Acre	RL	Residential Low Density	Southeast Kern
Kern		5.4 Maximum 4 Units/Net Acre	RL	Residential Low Density	West Kern
Kern		5.5 Maximum 1 Unit/Net Acre	RVL	Residential Very Low Density	Indian Wells
Kern		5.5 Maximum 1 Unit/Net Acre	RVL	Residential Very Low Density	Lake Isabella
Kern		5.5 Maximum 1 Unit/Net Acre	RVL	Residential Very Low Density	Southeast Kern
Kern		5.5 Maximum 1 Unit/Net Acre	RVL	Residential Very Low Density	Tehachapi Frazier Park
Kern		5.6 Minimum 2.5 Gross Acres/Unit	RVL	Residential Very Low Density	Delano McFarland
Kern		5.6 Minimum 2.5 Gross Acres/Unit	RVL	Residential Very Low Density	Indian Wells
Kern		5.6 Minimum 2.5 Gross Acres/Unit	RVL	Residential Very Low Density	Lake Isabella
Kern		5.6 Minimum 2.5 Gross Acres/Unit	RVL	Residential Very Low Density	Metro Bakersfield Area
Kern		5.6 Minimum 2.5 Gross Acres/Unit	RVL	Residential Very Low Density	Southeast Kern
Kern		5.6 Minimum 2.5 Gross Acres/Unit	RVL	Residential Very Low Density	Tehachapi Frazier Park
Kern		5.7 Minimum 5 Gross Acres/Unit	RVL	Residential Very Low Density	Indian Wells
Kern		5.7 Minimum 5 Gross Acres/Unit	RVL	Residential Very Low Density	Lake Isabella

Kern	5.7	Minimum 5 Gross Acres/Unit	RVL	Residential Very Low Density	Metro Bakersfield Area
Kern	5.7	Minimum 5 Gross Acres/Unit	RVL	Residential Very Low Density	Southeast Kern
Kern	5.7	Minimum 5 Gross Acres/Unit	RVL	Residential Very Low Density	Tehachapi Frazier Park
Kern	5.7	Minimum 5 Gross Acres/Unit	RVL	Residential Very Low Density	Wasco
Kern	5.7	Minimum 5 Gross Acres/Unit	RVL	Residential Very Low Density	West Kern
Kern	5.8	Minimum 20 Gross Acres/Unit	RVL	Residential Very Low Density	Indian Wells
Kern	5.8	Minimum 20 Gross Acres/Unit	RVL	Residential Very Low Density	Lake Isabella
Kern	5.8	Minimum 20 Gross Acres/Unit	RVL	Residential Very Low Density	Tehachapi Frazier Park
Kern	6.1	Major Commercial	REH	Retail/Heavy	Lake Isabella
Kern	6.2	General Commercial	REM	Retail/Medium	Indian Wells
Kern	6.2	General Commercial	REM	Retail/Medium	Lake Isabella
Kern	6.2	General Commercial	REM	Retail/Medium	Metro Bakersfield Area
Kern	6.2	General Commercial	REM	Retail/Medium	Tehachapi Frazier Park
Kern	6.2	General Commercial	REM	Retail/Medium	Wasco
Kern	6.2	General Commercial	REM	Retail/Medium	West Kern
Kern	6.3	Highway Commercial	REH	Retail/Heavy	Delano McFarland
Kern	6.3	Highway Commercial	REH	Retail/Heavy	Indian Wells
Kern	6.3	Highway Commercial	REH	Retail/Heavy	Lake Isabella
Kern	6.3	Highway Commercial	REH	Retail/Heavy	Metro Bakersfield Area
Kern	6.3	Highway Commercial	REH	Retail/Heavy	Southeast Kern
Kern	6.3	Highway Commercial	REH	Retail/Heavy	Tehachapi Frazier Park
Kern	6.3	Highway Commercial	REH	Retail/Heavy	Wasco
Kern	6.3	Highway Commercial	REH	Retail/Heavy	West Kern
Kern	7.1	Light Industrial	BP	Basic Production	Lake Isabella
Kern	7.1	Light Industrial	BP	Basic Production	Metro Bakersfield Area
Kern	7.1	Light Industrial	BP	Basic Production	Southeast Kern
Kern	7.1	Light Industrial	BP	Basic Production	Tehachapi Frazier Park
Kern	7.1	Light Industrial	BP	Basic Production	West Kern
Kern	7.2	Service Industrial	SW	Service/Warehouse	Indian Wells
Kern	7.2	Service Industrial	SW	Service/Warehouse	Lake Isabella
Kern	7.2	Service Industrial	SW	Service/Warehouse	Metro Bakersfield Area
Kern	7.2	Service Industrial	SW	Service/Warehouse	Southeast Kern
Kern	7.2	Service Industrial	SW	Service/Warehouse	Tehachapi Frazier Park
Kern	7.2	Service Industrial	SW	Service/Warehouse	Wasco

Kern	7.2	Service Industrial	SW	Service/Warehouse	West Kern
Kern	7.3	Heavy Industrial	BP	Basic/Production	Lake Isabella
Kern	7.3	Heavy Industrial	BP	Basic/Production	Southeast Kern
Kern	7.3	Heavy Industrial	BP	Basic/Production	Tehachapi Frazier Park
Kern	7.3	Heavy Industrial	BP	Basic/Production	West Kern
Kern	8.1	Intensive Agriculture (Min. 20 Acre Parcel Size)	RSC	Resources	Delano McFarland
Kern	8.1	Intensive Agriculture (Min. 20 Acre Parcel Size)	RSC	Resources	Indian Wells
Kern	8.1	Intensive Agriculture (Min. 20 Acre Parcel Size)	RSC	Resources	Lake Isabella
Kern	8.1	Intensive Agriculture (Min. 20 Acre Parcel Size)	RSC	Resources	Metro Bakersfield Area
Kern	8.1	Intensive Agriculture (Min. 20 Acre Parcel Size)	RSC	Resources	Southeast Kern
Kern	8.1	Intensive Agriculture (Min. 20 Acre Parcel Size)	RSC	Resources	Tehachapi Frazier Park
Kern	8.1	Intensive Agriculture (Min. 20 Acre Parcel Size)	RSC	Resources	Wasco
Kern	8.1	Intensive Agriculture (Min. 20 Acre Parcel Size)	RSC	Resources	West Kern
Kern	8.2	Resource Reserve (Min. 20 Acre Parcel Size)	RSC	Resources	Delano McFarland
Kern	8.2	Resource Reserve (Min. 20 Acre Parcel Size)	RSC	Resources	Lake Isabella
Kern	8.2	Resource Reserve (Min. 20 Acre Parcel Size)	RSC	Resources	Tehachapi Frazier Park
Kern	8.2	Resource Reserve (Min. 20 Acre Parcel Size)	RSC	Resources	Wasco
Kern	8.2	Resource Reserve (Min. 20 Acre Parcel Size)	RSC	Resources	West Kern
Kern	8.3	Extensive Agriculture (Min. 20 Acre Parcel Size)	RSC	Resources	Delano McFarland
Kern	8.3	Extensive Agriculture (Min. 20 Acre Parcel Size)	RSC	Resources	Indian Wells
Kern	8.3	Extensive Agriculture (Min. 20 Acre Parcel Size)	RSC	Resources	Lake Isabella
Kern	8.3	Extensive Agriculture (Min. 20 Acre Parcel Size)	RSC	Resources	Metro Bakersfield Area
Kern	8.3	Extensive Agriculture (Min. 20 Acre Parcel Size)	RSC	Resources	Southeast Kern
Kern	8.3	Extensive Agriculture (Min. 20 Acre Parcel Size)	RSC	Resources	Tehachapi Frazier Park
Kern	8.3	Extensive Agriculture (Min. 20 Acre Parcel Size)	RSC	Resources	Wasco
Kern	8.3	Extensive Agriculture (Min. 20 Acre Parcel Size)	RSC	Resources	West Kern
Kern	8.4	Mineral and Petroleum (Min. 5 Acre Parcel Size)	RSC	Resources	Delano McFarland
Kern	8.4	Mineral and Petroleum (Min. 5 Acre Parcel Size)	RSC	Resources	Indian Wells
Kern	8.4	Mineral and Petroleum (Min. 5 Acre Parcel Size)	RSC	Resources	Lake Isabella
Kern	8.4	Mineral and Petroleum (Min. 5 Acre Parcel Size)	RSC	Resources	Metro Bakersfield Area
Kern	8.4	Mineral and Petroleum (Min. 5 Acre Parcel Size)	RSC	Resources	Southeast Kern
Kern	8.4	Mineral and Petroleum (Min. 5 Acre Parcel Size)	RSC	Resources	Tehachapi Frazier Park
Kern	8.4	Mineral and Petroleum (Min. 5 Acre Parcel Size)	RSC	Resources	Wasco
Kern	8.4	Mineral and Petroleum (Min. 5 Acre Parcel Size)	RSC	Resources	West Kern

Kern		8.5 Resource Management (Min. 20 Acre Parcel Size)	RSC	Resources	Indian Wells
Kern		8.5 Resource Management (Min. 20 Acre Parcel Size)	RSC	Resources	Lake Isabella
Kern		8.5 Resource Management (Min. 20 Acre Parcel Size)	RSC	Resources	Metro Bakersfield Area
Kern		8.5 Resource Management (Min. 20 Acre Parcel Size)	RSC	Resources	Southeast Kern
Kern		8.5 Resource Management (Min. 20 Acre Parcel Size)	RSC	Resources	Tehachapi Frazier Park
Kern		8.5 Resource Management (Min. 20 Acre Parcel Size)	RSC	Resources	Wasco
Kern		8.5 Resource Management (Min. 20 Acre Parcel Size)	RSC	Resources	West Kern
Kern	Wind Energy	Wind energy zoned areas - NOT in GP	BP	Basic/Production	Southeast Kern
Kern	Wind Energy	Wind energy zoned areas - NOT in GP	BP	Basic/Production	Tehachapi Frazier Park

Jurisdiction	General Plan Code	General Plan Description	Uplan Code	Uplan Description	SUBREGION
Actis	5.1	Maximum 29 Units/Net Acre	RH	Residential High Density	Southeast Kern
Actis	5.6	Minimum 2.5 Gross Acres/Unit	RVL	Residential Very Low Density	Southeast Kern
Actis	6.3	Highway Commercial	REH	Retail/Heavy	Southeast Kern
Actis	7.2	Service Industrial	SW	Service/Warehouse	Southeast Kern
Bear Valley Springs	Residential	Residential	RL	Residential Low Density	Tehachapi Frazier Park
Blackwells Corner	Ag. Oriented Industry	Agriculturally Oriented Industry	RSC	Resources	Wasco
Blackwells Corner	Commercial	Commercial	REH	Retail/Heavy	Wasco
Blackwells Corner	County Administrative Center Si*	Blackwells Corner	PU	Public Use	Wasco
Blackwells Corner	High Density Residential	High Density Residential	RH	Residential High Density	Wasco
Blackwells Corner	Low Density Mobilehome Subdivis*	Blackwells Corner	RL	Residential Low Density	Wasco
Blackwells Corner	Low Density Residential	Low Density Residential	RL	Residential Low Density	Wasco
Blackwells Corner	Medium Density Residential	Medium Density Residential	RM	Residential Medium Density	Wasco
Blackwells Corner	Mobilehome Park	Mobilehome Park	RL	Residential Low Density	Wasco
Blackwells Corner	Park Site - Greenbelt	Park Site - Greenbelt	RSC	Resources	Wasco
Blackwells Corner	School Site	School Site	PU	Public Use	Wasco
Blackwells Corner	Suburban Residential	Suburban Residential	RL	Residential Low Density	Wasco
Boron	1.1	State or Federal Land	Fed/St	Federal/State	Southeast Kern
Boron	3.1	Public or Private Recreation Areas	PU	Public Use	Southeast Kern
Boron	3.2	Educational Facilities	PU	Public Use	Southeast Kern
Boron	3.3	Other Facilities	PU	Public Use	Southeast Kern
Boron	5.2	Maximum 16 Units/Net Acre	RM	Residential Medium Density	Southeast Kern
Boron	5.3	Maximum 10 Units/Net Acre	RL	Residential Low Density	Southeast Kern
Boron	5.4	Maximum 4 Units/Net Acre	RL	Residential Low Density	Southeast Kern
Boron	5.5	Maximum 1 Unit/Net Acre	RVL	Residential Very Low Density	Southeast Kern
Boron	5.6	Minimum 2.5 Gross Acres/Unit	RVL	Residential Very Low Density	Southeast Kern
Boron	6.2	General Commercial	REM	Retail/Medium	Southeast Kern
Boron	6.3	Highway Commercial	REH	Retail/Heavy	Southeast Kern
Boron	7.1	Light Industrial	BP	Basic Production	Southeast Kern
Boron	8.5	Resource Management (Min. 20 Acre Parcel Size)	RSC	Resources	Southeast Kern
Buena Vista Hills	3.1	Specific Plan Required	PU	Public Use	West Kern
Buena Vista Hills	3.2	Specific Plan Required	PU	Public Use	West Kern
Buena Vista Hills	3.3	Other Facilities	PU	Public Use	West Kern
Buena Vista Hills	5.2	5.2	RM	Residential Medium Density	West Kern
Buena Vista Hills	5.3	5.3	RL	Residential Low Density	West Kern
Buena Vista Hills	5.4	5.4	RVL	Residential Very Low Density	West Kern
Buena Vista Hills	5.5	5.5	RM	Residential Medium Density	West Kern
Buena Vista Hills	5.6	5.6	RVL	Residential Very Low Density	Metro Bakersfield Area

Buena Vista Hills		5.6		5.6	RVL	Residential Very Low Density	West Kern
Buena Vista Hills		8.5	Resource Management (Min. 20 Acre Parcel Size)		RSC	Resources	West Kern
Buttonwillow and Vicinity	Ag. Oriented Industry		Agriculturally Oriented Industry		RSC	Resources	Metro Bakersfield Area
Buttonwillow and Vicinity	Central Bus. Dist.		Central Business District		REH	Retail/Heavy	Metro Bakersfield Area
Buttonwillow and Vicinity	Civic Center		Civic Center		PU	Public Use	Metro Bakersfield Area
Buttonwillow and Vicinity	Greenbelt Areas		Greenbelt Areas (Transmission Line Easements)		RSC	Resources	Metro Bakersfield Area
Buttonwillow and Vicinity	Intensive Agriculture		Intensive Agriculture		RSC	Resources	Metro Bakersfield Area
Buttonwillow and Vicinity	Light Industrial		Light Industrial		BP	Basic/Production	Metro Bakersfield Area
Buttonwillow and Vicinity	MS		Midway Substation		PU	Public Use	Metro Bakersfield Area
Buttonwillow and Vicinity	P		Park		PU	Public Use	Metro Bakersfield Area
Buttonwillow and Vicinity	PU		Public Utility		PU	Public Use	Metro Bakersfield Area
Buttonwillow and Vicinity	RY		Road Maintenance Yard		PU	Public Use	Metro Bakersfield Area
Buttonwillow and Vicinity	S		Buttonwillow School		PU	Public Use	Metro Bakersfield Area
Buttonwillow and Vicinity	Single Family Residence		Single Family Residence		RL	Residential Low Density	Metro Bakersfield Area
Buttonwillow and Vicinity	SL		Sanitary Landfill		PU	Public Use	Metro Bakersfield Area
Buttonwillow and Vicinity	SL/BD		Sanitary Landfill - Burn Dump Hazard		PU	Public Use	Metro Bakersfield Area
Buttonwillow and Vicinity	TP		Sewage Treatment Plant		PU	Public Use	Metro Bakersfield Area
Buttonwillow and Vicinity	Two Family Residence		Two Family Residence		RM	Residential Medium Density	Metro Bakersfield Area
Cache Creek		5.5	Maximum 1 Unit/Net Acre		RVL	Residential Very Low Density	Tehachapi Frazier Park
Cache Creek		5.6	Minimum 2.5 Gross Acres/Unit		RVL	Residential Very Low Density	Tehachapi Frazier Park
Cache Creek		5.8	Minimum 20 Gross Acres/Unit		RVL	Residential Very Low Density	Tehachapi Frazier Park
Cache Creek		6.3	Highway Commercial		REH	Retail/Heavy	Tehachapi Frazier Park
Cache Creek		7.2	Service Industrial		SW	Service/Warehouse	Tehachapi Frazier Park
Cal Centre		3.3	Other Facilities		PU	Public Use	Metro Bakersfield Area
Cal Centre		6.2	General Commercial		REM	Retail/Medium	Metro Bakersfield Area
Cal Centre		6.3	Highway Commercial		REH	Retail/Heavy	Metro Bakersfield Area
Caliente		5.3	Maximum 10 Units/Net Acre		RL	Residential Low Density	Lake Isabella
Caliente		5.3	Maximum 10 Units/Net Acre		RL	Residential Low Density	Tehachapi Frazier Park
Caliente		6.2	General Commercial		REM	Retail/Medium	Lake Isabella
Caliente		6.2	General Commercial		REM	Retail/Medium	Tehachapi Frazier Park
Caliente		8.1	Intensive Agriculture (Min. 20 Acre Parcel Size)		RSC	Resources	Lake Isabella
Caliente		8.1	Intensive Agriculture (Min. 20 Acre Parcel Size)		RSC	Resources	Tehachapi Frazier Park
Camelot (Phase I)		6.2	General Commercial		REM	Retail/Medium	Southeast Kern
Cameron Canyon		3.3	Other Facilities		PU	Public Use	Tehachapi Frazier Park
Cameron Canyon		5.7	Minimum 5 Gross Acres/Unit		RVL	Residential Very Low Density	Tehachapi Frazier Park
Cameron Canyon		5.8	Minimum 20 Gross Acres/Unit		RVL	Residential Very Low Density	Tehachapi Frazier Park
Cameron Canyon		8.2	Resource Agriculture (Min. 20 Acre Parcel Size)		RSC	Resources	Tehachapi Frazier Park
Cameron Canyon		8.4	Mineral and Petroleum (Min. 5 Acre Parcel Size)		RSC	Resources	Tehachapi Frazier Park

Cameron Canyon		8.5	Resource Management (Min. 20 Acre Parcel Size)	RSC	Resources	Tehachapi Frazier Park
Cameron Pointe		6.3	Highway Commercial	REH	Retail/Heavy	Metro Bakersfield Area
Cantil		5.6	Minimum 2.5 Gross Acres/Unit	RVL	Residential Very Low Density	Southeast Kern
Cantil		5.8	Minimum 20 Gross Acres/Unit	RVL	Residential Very Low Density	Southeast Kern
Cantil		8.1	Intensive Agriculture (Min. 20 Acre Parcel Size)	RSC	Resources	Southeast Kern
Cuddy Valley	Agricultural Reserve		Agricultural Reserve - 1 D.U./20 Acres	RSC	Resources	Tehachapi Frazier Park
Cuddy Valley	Medium Density Residential		Medium Density Residential	RM	Residential Medium Density	Tehachapi Frazier Park
Cuddy Valley	Permanent Open Space		Permanent Open Space	RSC	Resources	Tehachapi Frazier Park
Cuddy Valley	Reserve - Undesignated		Reserve - Undesignated	RSC	Resources	Tehachapi Frazier Park
Cuddy Valley	Rural Residential		Rural Residential	RVL	Residential Very Low Density	Tehachapi Frazier Park
Derby Acres		1.1	State or Federal Land	Fed/St	Federal/State	West Kern
Derby Acres		3.1	Public or Private Recreation Areas	PU	Public Use	West Kern
Derby Acres		5.4	Maximum 4 Units/Net Acre	RL	Residential Low Density	West Kern
Derby Acres		5.45	Maximum 2 Units/Net Acre	RVL	Residential Very Low Density	West Kern
Derby Acres		5.5	Maximum 1 Unit/Net Acre	RVL	Residential Very Low Density	West Kern
Derby Acres		5.6	Minimum 2.5 Gross Acres/Unit	RVL	Residential Very Low Density	West Kern
Derby Acres		6.2	General Commercial	REM	Retail/Medium	West Kern
Derby Acres		7.15	Transportation Industrial	BP	Basic Production	West Kern
Derby Acres		8.4	Mineral and Petroleum (Min. 5 Acre Parcel Size)	RSC	Resources	West Kern
Derby Acres		8.5	Resource Management (Min. 20 Acre Parcel Size)	RSC	Resources	West Kern
Desert Lake		1.1	State or Federal Land	Fed/St	Federal/State	Southeast Kern
Desert Lake		3.1	Public or Private Recreation Areas	PU	Public Use	Southeast Kern
Desert Lake		3.2	Educational Facilities	PU	Public Use	Southeast Kern
Desert Lake		5.3	Maximum 10 Units/Net Acre	RL	Residential Low Density	Southeast Kern
Desert Lake		5.4	Maximum 4 Units/Net Acre	RL	Residential Low Density	Southeast Kern
Desert Lake		6.2	General Commercial	REM	Retail/Medium	Southeast Kern
Desert Lake		6.3	Highway Commercial	REH	Retail/Heavy	Southeast Kern
Desert Lake		7.1	Light Industrial	BP	Basic Production	Southeast Kern
Desert Lake		8.5	Resource Management (Min. 20 Acre Parcel Size)	RSC	Resources	Southeast Kern
Dustin Acres		3.1	Public or Private Recreation Areas	PU	Public Use	West Kern
Dustin Acres		5.5	Maximum 1 Unit/Net Acre	RVL	Residential Very Low Density	West Kern
Dustin Acres		7.2	Service Industrial	SW	Service/Warehouse	West Kern
Dustin Acres		7.4	Agricultural Industrial	RSC	Resources	West Kern
Dustin Acres		8.1	Intensive Agriculture (Min. 20 Acre Parcel Size)	RSC	Resources	West Kern
Fellows		5.2	Maximum 16 Units/Net Acre	RM	Residential Medium Density	West Kern
Fellows		5.3	Maximum 10 Units/Net Acre	RL	Residential Low Density	West Kern
Fellows		5.6	Minimum 2.5 Gross Acres/Unit	RVL	Residential Very Low Density	West Kern
Fellows		6.2	General Commercial	REM	Retail/Medium	West Kern

Fellows	8.4	Mineral and Petroleum (Min. 5 Acre Parcel Size)	RSC	Resources	West Kern
Frazier Park/Lebec	1.1	State or Federal Land	Fed/St	Federal/State	Tehachapi Frazier Park
Frazier Park/Lebec	3.1	Public or Private Recreation Areas	PU	Public Use	Tehachapi Frazier Park
Frazier Park/Lebec	3.2	Educational Facilities	PU	Public Use	Tehachapi Frazier Park
Frazier Park/Lebec	3.3	Other Facilities	PU	Public Use	Tehachapi Frazier Park
Frazier Park/Lebec	3.4	Solid Waste Facilities	PU	Public Use	Tehachapi Frazier Park
Frazier Park/Lebec	5.2	Maximum 16 Units/Net Acre	RM	Residential Medium Density	Tehachapi Frazier Park
Frazier Park/Lebec	5.3	Maximum 10 Units/Net Acre	RL	Residential Low Density	Tehachapi Frazier Park
Frazier Park/Lebec	5.4	Maximum 4 Units/Net Acre	RL	Residential Low Density	Tehachapi Frazier Park
Frazier Park/Lebec	5.5	Maximum 1 Unit/Net Acre	RVL	Residential Very Low Density	Tehachapi Frazier Park
Frazier Park/Lebec	5.6	Minimum 2.5 Gross Acres/Unit	RVL	Residential Very Low Density	Tehachapi Frazier Park
Frazier Park/Lebec	5.7	Minimum 5 Gross Acres/Unit	RVL	Residential Very Low Density	Tehachapi Frazier Park
Frazier Park/Lebec	5.8	Minimum 20 Gross Acres/Unit	RVL	Residential Very Low Density	Tehachapi Frazier Park
Frazier Park/Lebec	6.1	Major Commercial	REH	Retail/Heavy	Tehachapi Frazier Park
Frazier Park/Lebec	6.2	General Commercial	REM	Retail/Medium	Tehachapi Frazier Park
Frazier Park/Lebec	7.1	Light Industrial	BP	Basic Production	Tehachapi Frazier Park
Frazier Park/Lebec	7.2	Service Industrial	SW	Service/Warehouse	Tehachapi Frazier Park
Frazier Park/Lebec	8.3	Extensive Agriculture (Min. 20 Acre Parcel Size)	RSC	Resources	Tehachapi Frazier Park
Frazier Park/Lebec	8.4	Mineral and Petroleum (Min. 5 Acre Parcel Size)	RSC	Resources	Tehachapi Frazier Park
Frazier Park/Lebec	8.5	Resource Management (Min. 20 Acre Parcel Size)	RSC	Resources	Tehachapi Frazier Park
Freemont	5.4	Maximum 4 Units/Net Acre	RL	Residential Low Density	Southeast Kern
Freemont	5.6	Minimum 2.5 Gross Acres/Unit	RVL	Residential Very Low Density	Southeast Kern
Freemont	5.8	Minimum 20 Gross Acres/Unit	RVL	Residential Very Low Density	Southeast Kern
Glennville	1.1	State or Federal Land	Fed/St	Federal/State	Lake Isabella
Glennville	3.1	Public or Private Recreation Areas	PU	Public Use	Lake Isabella
Glennville	3.2	Educational Facilities	PU	Public Use	Lake Isabella
Glennville	3.3	Other Facilities	PU	Public Use	Lake Isabella
Glennville	5.4	Maximum 4 Units/Net Acre	RL	Residential Low Density	Lake Isabella
Glennville	5.5	Maximum 1 Unit/Net Acre	RVL	Residential Very Low Density	Lake Isabella
Glennville	5.6	Minimum 2.5 Gross Acres/Unit	RVL	Residential Very Low Density	Lake Isabella
Glennville	5.7	Minimum 5 Gross Acres/Unit	RVL	Residential Very Low Density	Lake Isabella
Glennville	6.2	General Commercial	REM	Retail/Medium	Lake Isabella
Glennville	8.3	Extensive Agriculture (Min. 20 Acre Parcel Size)	RSC	Resources	Lake Isabella
Glennville	8.5	Resource Management (Min. 20 Acre Parcel Size)	RSC	Resources	Lake Isabella
Greater Tehachapi Area	1.1	State or Federal Land	Fed/St	Federal/State	Tehachapi Frazier Park
Greater Tehachapi Area	3.1	Public or Private Recreation Areas	PU	Public Use	Tehachapi Frazier Park
Greater Tehachapi Area	3.2	Educational Facilities	PU	Public Use	Tehachapi Frazier Park
Greater Tehachapi Area	3.3	Other Facilities	PU	Public Use	Tehachapi Frazier Park

Greater Tehachapi Area		5.1	Maximum 29 Units/Net Acre	RH	Residential High Density	Tehachapi Frazier Park
Greater Tehachapi Area		5.2	Maximum 16 Units/Net Acre	RM	Residential Medium Density	Tehachapi Frazier Park
Greater Tehachapi Area		5.3	Maximum 10 Units/Net Acre	RL	Residential Low Density	Tehachapi Frazier Park
Greater Tehachapi Area		5.4	Maximum 4 Units/Net Acre	RL	Residential Low Density	Tehachapi Frazier Park
Greater Tehachapi Area		5.45	Maximum 2 Units/Net Acre	RVL	Residential Very Low Density	Tehachapi Frazier Park
Greater Tehachapi Area		5.5	Maximum 1 Unit/Net Acre	RVL	Residential Very Low Density	Tehachapi Frazier Park
Greater Tehachapi Area	5.5.1		Maximum 1 Unit/Net Acre - Cluster Requirement	RVL	Residential Very Low Density	Tehachapi Frazier Park
Greater Tehachapi Area		5.6	Minimum 2.5 Gross Acres/Unit	RVL	Residential Very Low Density	Tehachapi Frazier Park
Greater Tehachapi Area	5.6.1		Minimum 2.5 Gross Acres/Unit - Cluster Option	RVL	Residential Very Low Density	Tehachapi Frazier Park
Greater Tehachapi Area		5.7	Minimum 5 Gross Acres/Unit	RVL	Residential Very Low Density	Tehachapi Frazier Park
Greater Tehachapi Area		5.75	Minimum 10 Gross Acres/Unit	RVL	Residential Very Low Density	Tehachapi Frazier Park
Greater Tehachapi Area		5.8	Minimum 20 Gross Acres/Unit	RVL	Residential Very Low Density	Tehachapi Frazier Park
Greater Tehachapi Area		6.1	Major Commercial	REH	Retail/Heavy	Tehachapi Frazier Park
Greater Tehachapi Area		6.2	General Commercial	REM	Retail/Medium	Tehachapi Frazier Park
Greater Tehachapi Area		6.3	Highway Commercial	REH	Retail/Heavy	Tehachapi Frazier Park
Greater Tehachapi Area		7.1	Light Industrial	BP	Basic Production	Tehachapi Frazier Park
Greater Tehachapi Area		7.2	Service Industrial	SW	Service/Warehouse	Tehachapi Frazier Park
Greater Tehachapi Area		7.3	Heavy Industrial	BP	Basic/Production	Tehachapi Frazier Park
Greater Tehachapi Area		8.1	Intensive Agriculture (Min. 20 Acre Parcel Size)	RSC	Resources	Tehachapi Frazier Park
Greater Tehachapi Area		8.2	Resource Reserve (Min. 20 Acre Parcel Size)	RSC	Resources	Tehachapi Frazier Park
Greater Tehachapi Area		8.3	Extensive Agriculture (Min. 20 Acre Parcel Size)	RSC	Resources	Tehachapi Frazier Park
Greater Tehachapi Area		8.4	Mineral and Petroleum (Min. 5 Acre Parcel Size)	RSC	Resources	Tehachapi Frazier Park
Greater Tehachapi Area		8.5	Resource Management (Min. 20 Acre Parcel Size)	RSC	Resources	Tehachapi Frazier Park
Havilah		1.1	State or Federal Land	Fed/St	Federal/State	Lake Isabella
Havilah		3.3	Other Facilities	PU	Public Use	Lake Isabella
Havilah		5.4	Maximum 4 Units/Net Acre	RL	Residential Low Density	Lake Isabella
Havilah		5.5	Maximum 1 Unit/Net Acre	RVL	Residential Very Low Density	Lake Isabella
Havilah		5.6	Minimum 2.5 Gross Acres/Unit	RVL	Residential Very Low Density	Lake Isabella
Havilah		6.2	General Commercial	REM	Retail/Medium	Lake Isabella
Havilah		6.3	Highway Commercial	REH	Retail/Heavy	Lake Isabella
Havilah		8.5	Resource Management (Min. 20 Acre Parcel Size)	RSC	Resources	Lake Isabella
I-5 and Hwy. 58		1.1	State or Federal Land	Fed/St	Federal/State	Metro Bakersfield Area
I-5 and Hwy. 58		3.1	Public or Private Recreation Areas	PU	Public Use	Metro Bakersfield Area
I-5 and Hwy. 58		3.2	Educational Facilities	PU	Public Use	Metro Bakersfield Area
I-5 and Hwy. 58		3.3	Other Facilities	PU	Public Use	Metro Bakersfield Area
I-5 and Hwy. 58		5.2	Maximum 16 Units/Net Acre	RM	Residential Medium Density	Metro Bakersfield Area
I-5 and Hwy. 58		5.3	Maximum 10 Units/Net Acre	RL	Residential Low Density	Metro Bakersfield Area
I-5 and Hwy. 58		5.4	Maximum 4 Units/Net Acre	RL	Residential Low Density	Metro Bakersfield Area

I-5 and Hwy. 58	6.3	Highway Commercial	REH	Retail/Heavy	Metro Bakersfield Area
I-5 and Hwy. 58	7.1	Light Industrial	BP	Basic Production	Metro Bakersfield Area
I-5 and Hwy. 58	8.1	Intensive Agriculture (Min. 20 Acre Parcel Size)	RSC	Resources	Metro Bakersfield Area
I-5 and Hwy. 58	8.5	Resource Management (Min. 20 Acre Parcel Size)	RSC	Resources	Metro Bakersfield Area
Inyokern	1.1	State or Federal Land	Fed/St	Federal/State	Indian Wells
Inyokern	3.1	Public or Private Recreation Areas	PU	Public Use	Indian Wells
Inyokern	3.2	Educational Facilities	PU	Public Use	Indian Wells
Inyokern	3.3	Other Facilities	PU	Public Use	Indian Wells
Inyokern	5.2	Maximum 16 Units/Net Acre	RM	Residential Medium Density	Indian Wells
Inyokern	5.3	Maximum 10 Units/Net Acre	RL	Residential Low Density	Indian Wells
Inyokern	5.5	Maximum 1 Unit/Net Acre	RVL	Residential Very Low Density	Indian Wells
Inyokern	5.6	Minimum 2.5 Gross Acres/Unit	RVL	Residential Very Low Density	Indian Wells
Inyokern	6.2	General Commercial	REM	Retail/Medium	Indian Wells
Inyokern	7.1	Light Industrial	BP	Basic Production	Indian Wells
Inyokern	7.2	Service Industrial	SW	Service/Warehouse	Indian Wells
Inyokern	7.3	Heavy Industrial	BP	Basic/Production	Indian Wells
Jawbone Canyon	5.6	Minimum 2.5 Gross Acres/Unit	RVL	Residential Very Low Density	Southeast Kern
Jawbone Canyon	5.7	Minimum 5 Gross Acres/Unit	RVL	Residential Very Low Density	Southeast Kern
Jawbone Canyon	5.8	Minimum 20 Gross Acres/Unit	RVL	Residential Very Low Density	Lake Isabella
Jawbone Canyon	5.8	Minimum 20 Gross Acres/Unit	RVL	Residential Very Low Density	Southeast Kern
Jawbone Canyon	5.8	Minimum 20 Gross Acres/Unit	RVL	Residential Very Low Density	Tehachapi Frazier Park
Keene Ranch	3.1	Public or Private Recreation Areas	PU	Public Use	Tehachapi Frazier Park
Keene Ranch	3.2	Educational Facilities	PU	Public Use	Tehachapi Frazier Park
Keene Ranch	3.3	Other Facilities	PU	Public Use	Tehachapi Frazier Park
Keene Ranch	5.35	Maximum 7 Units/Net Acre	RL	Residential Low Density	Tehachapi Frazier Park
Keene Ranch	5.4	Maximum 4 Units/Net Acre	RL	Residential Low Density	Tehachapi Frazier Park
Keene Ranch	5.45	Maximum 2 Units/Net Acre	RVL	Residential Very Low Density	Tehachapi Frazier Park
Keene Ranch	5.5	Maximum 1 Unit/Net Acre	RVL	Residential Very Low Density	Tehachapi Frazier Park
Keene Ranch	5.6	Minimum 2.5 Gross Acres/Unit	RVL	Residential Very Low Density	Tehachapi Frazier Park
Keene Ranch	5.7	Minimum 5 Gross Acres/Unit	RVL	Residential Very Low Density	Tehachapi Frazier Park
Keene Ranch	6.2	General Commercial	REM	Retail/Medium	Tehachapi Frazier Park
Keene Ranch	8.5	Resource Management (Min. 20 Acre Parcel Size)	RSC	Resources	Tehachapi Frazier Park
Keene Rural Community	1.1	State or Federal Land	Fed/St	Federal/State	Tehachapi Frazier Park
Keene Rural Community	3.3	Other Facilities	PU	Public Use	Tehachapi Frazier Park
Keene Rural Community	5.3	Maximum 10 Units/Net Acre	RL	Residential Low Density	Tehachapi Frazier Park
Keene Rural Community	5.6	Minimum 2.5 Gross Acres/Unit	RVL	Residential Very Low Density	Tehachapi Frazier Park
Keene Rural Community	8.2	Resource Reserve (Min. 20 Acre Parcel Size)	RSC	Resources	Tehachapi Frazier Park
Kelso Creek at Rocky Point	1.1	State or Federal Land	Fed/St	Federal/State	Lake Isabella

Kelso Creek at Rocky Point		5.6	Minimum 2.5 Gross Acres/Unit	RVL	Residential Very Low Density	Lake Isabella
Kelso Creek at Rocky Point		5.7	Minimum 5 Gross Acres/Unit	RVL	Residential Very Low Density	Lake Isabella
Kelso Creek at Rocky Point		5.8	Minimum 20 Gross Acres/Unit	RVL	Residential Very Low Density	Lake Isabella
Kelso Creek at Rocky Point		8.5	Resource Management (Min. 20 Acre Parcel Size)	RSC	Resources	Lake Isabella
Kelso Valley		3.3	Other Facilities	PU	Public Use	Lake Isabella
Kelso Valley		5.45	Maximum 2 Units/Net Acre	RVL	Residential Very Low Density	Lake Isabella
Kelso Valley		5.5	Maximum 1 Unit/Net Acre	RVL	Residential Very Low Density	Lake Isabella
Kelso Valley		8.5	Resource Management (Min. 20 Acre Parcel Size)	RSC	Resources	Lake Isabella
Lost Hills	Agricultural		Agricultural	RSC	Resources	Wasco
Lost Hills	Commercial		Commercial	REH	Retail/Heavy	Wasco
Lost Hills	High Density Residential		High Density Residential	RH	Residential High Density	Wasco
Lost Hills	Industrial		Industrial	BP	Basic/Production	Wasco
Lost Hills	Low Density Residential		Low Density Residential - 7 D.U./Acre Max	RL	Residential Low Density	Wasco
Lost Hills	Medium Density Residential		Medium Density Residential	RM	Residential Medium Density	Wasco
Lost Hills	Public Facilities		Public Facilities	PU	Public Use	Wasco
Lost Hills	Recreational		Recreational	PU	Public Use	Wasco
Lost Hills	Reserve		Reserve	RSC	Resources	Wasco
Lost Hills	Special Use		Special Use	MU	Mixed Use	Wasco
Lost Hills	Tourist Commercial		Tourist Commercial	REM	Retail/Medium	Wasco
McKittrick		1.1	State or Federal Land	Fed/St	Federal/State	West Kern
McKittrick		3.1	Public or Private Recreation Areas	PU	Public Use	West Kern
McKittrick		3.2	Educational Facilities	PU	Public Use	West Kern
McKittrick		3.3	Other Facilities	PU	Public Use	West Kern
McKittrick		3.4	solid waste facilities	PU	Public Use	West Kern
McKittrick		5.3	Maximum 10 Units/Net Acre	RL	Residential Low Density	West Kern
McKittrick		5.4	Maximum 4 Units/Net Acre	RL	Residential Low Density	West Kern
McKittrick		5.7	Minimum 5 Gross Acres/Unit	RVL	Residential Very Low Density	West Kern
McKittrick		6.2	General Commercial	REM	Retail/Medium	West Kern
McKittrick		7.1	Light Industrial	BP	Basic Production	West Kern
McKittrick		7.15	Transportation Industrial	BP	Basic Production	West Kern
McKittrick		8.4	Mineral and Petroleum (Min. 5 Acre Parcel Size)	RSC	Resources	West Kern
McKittrick		8.5	Resource Management (Min. 20 Acre Parcel Size)	RSC	Resources	West Kern
Mettler		5.3	Maximum 10 Units/Net Acre	RL	Residential Low Density	West Kern
Mettler		6.2	General Commercial	REM	Retail/Medium	West Kern
Mettler		6.3	Highway Commercial	REH	Retail/Heavy	West Kern
Mettler		8.1	Intensive Agriculture (Min. 20 Acre Parcel Size)	RSC	Resources	Metro Bakersfield Area
Mettler		8.1	Intensive Agriculture (Min. 20 Acre Parcel Size)	RSC	Resources	Tehachapi Frazier Park
Mettler		8.1	Intensive Agriculture (Min. 20 Acre Parcel Size)	RSC	Resources	West Kern

Mil Potrero	Commercial Precise Development	Commercial Precise Development	REH	Retail/Heavy	Tehachapi Frazier Park
Mil Potrero	Individual Single Family Dwelling Uni*	Mil Potrero	RL	Residential Low Density	Tehachapi Frazier Park
Mil Potrero	Limited Multiple Family Dwelling Zone*	Mil Potrero	RH	Residential High Density	Tehachapi Frazier Park
Mil Potrero	Mobilehome Subdivision Zoned Lots	Mobilehome Subdivision Zoned Lots	RL	Residential Low Density	Tehachapi Frazier Park
Mil Potrero	Open Space	Open Space	RSC	Resources	Tehachapi Frazier Park
Mojave	1.1	State or Federal Land	Fed/St	Federal/State	Southeast Kern
Mojave	1.1	State or Federal Land	Fed/St	Federal/State	Tehachapi Frazier Park
Mojave	3.1	Public or Private Recreation Areas	PU	Public Use	Southeast Kern
Mojave	3.2	Educational Facilities	PU	Public Use	Southeast Kern
Mojave	3.3	Other Facilities	PU	Public Use	Southeast Kern
Mojave	3.4	Solid Waste Facilities	PU	Public Use	Southeast Kern
Mojave	5.1	Maximum 29 Units/Net Acre	RH	Residential High Density	Southeast Kern
Mojave	5.2	Maximum 16 Units/Net Acre	RM	Residential Medium Density	Southeast Kern
Mojave	5.3	Maximum 10 Units/Net Acre	RL	Residential Low Density	Southeast Kern
Mojave	5.4	Maximum 4 Units/Net Acre	RL	Residential Low Density	Southeast Kern
Mojave	5.5	Maximum 1 Unit/Net Acre	RVL	Residential Very Low Density	Southeast Kern
Mojave	5.6	Minimum 2.5 Gross Acres/Unit	RVL	Residential Very Low Density	Southeast Kern
Mojave	6.1	Major Commercial	REH	Retail/Heavy	Southeast Kern
Mojave	6.2	General Commercial	REM	Retail/Medium	Southeast Kern
Mojave	6.3	Highway Commercial	REH	Retail/Heavy	Southeast Kern
Mojave	7.1	Light Industrial	BP	Basic Production	Southeast Kern
Mojave	7.2	Service Industrial	SW	Service/Warehouse	Southeast Kern
Mojave	7.3	Heavy Industrial	BP	Basic/Production	Southeast Kern
Mojave	8.2	Resource Agriculture (Min. 20 Acre Parcel Size)	RSC	Resources	Southeast Kern
Mojave	8.2	Resource Agriculture (Min. 20 Acre Parcel Size)	RSC	Resources	Tehachapi Frazier Park
Mojave	8.4	Mineral and Petroleum (Min. 5 Acre Parcel Size)	RSC	Resources	Southeast Kern
Mojave	8.4	Mineral and Petroleum (Min. 5 Acre Parcel Size)	RSC	Resources	Tehachapi Frazier Park
Mojave	8.5	Resource Management (Min. 20 Acre Parcel Size)	RSC	Resources	Southeast Kern
Mojave	8.5	Resource Management (Min. 20 Acre Parcel Size)	RSC	Resources	Tehachapi Frazier Park
North Edwards	3.1	Public or Private Recreation Areas	PU	Public Use	Southeast Kern
North Edwards	3.2	Educational Facilities	PU	Public Use	Southeast Kern
North Edwards	3.3	Other Facilities	PU	Public Use	Southeast Kern
North Edwards	5.2	Maximum 16 Units/Net Acre	RM	Residential Medium Density	Southeast Kern
North Edwards	5.3	Maximum 10 Units/Net Acre	RL	Residential Low Density	Southeast Kern
North Edwards	5.4	Maximum 4 Units/Net Acre	RL	Residential Low Density	Southeast Kern
North Edwards	5.6	Minimum 2.5 Gross Acres/Unit	RVL	Residential Very Low Density	Southeast Kern
North Edwards	6.2	General Commercial	REM	Retail/Medium	Southeast Kern
North Edwards	6.3	Highway Commercial	REH	Retail/Heavy	Southeast Kern

North Edwards	7.1	Light Industrial	BP	Basic Production	Southeast Kern
North Edwards	8.2	Resource Reserve (Min. 20 Acre Parcel Size)	RSC	Resources	Southeast Kern
North Edwards	8.5	Resource Management (Min. 20 Acre Parcel Size)	RSC	Resources	Southeast Kern
Oglesby	3.3	Other Facilities	PU	Public Use	Metro Bakersfield Area
Oglesby	5.3	Maximum 10 Units/Net Acre	RL	Residential Low Density	Metro Bakersfield Area
Oglesby	6.2	General Commercial	REM	Retail/Medium	Metro Bakersfield Area
Oglesby	6.3	Highway Commercial	REH	Retail/Heavy	Metro Bakersfield Area
O'Neil Canyon	1.1	State or Federal Land	Fed/St	Federal/State	Tehachapi Frazier Park
O'Neil Canyon	3.1	Public or Private Recreation Areas	PU	Public Use	Tehachapi Frazier Park
O'Neil Canyon	3.2	Educational Facilities	PU	Public Use	Tehachapi Frazier Park
O'Neil Canyon	5.4	Maximum 4 Units/Net Acre	RL	Residential Low Density	Tehachapi Frazier Park
O'Neil Canyon	5.45	Maximum 2 Units/Net Acre	RVL	Residential Very Low Density	Tehachapi Frazier Park
O'Neil Canyon	5.5	Maximum 1 Unit/Net Acre	RVL	Residential Very Low Density	Tehachapi Frazier Park
O'Neil Canyon	5.6	Minimum 2.5 Gross Acres/Unit	RVL	Residential Very Low Density	Tehachapi Frazier Park
O'Neil Canyon	5.75	Minimum 10 Gross Acres/Unit	RVL	Residential Very Low Density	Tehachapi Frazier Park
O'Neil Canyon	6.3	Highway Commercial	REH	Retail/Heavy	Tehachapi Frazier Park
O'Neil Canyon	7.3	Heavy Industrial	BP	Basic/Production	Tehachapi Frazier Park
O'Neil Canyon	8.5	Resource Management (Min. 20 Acre Parcel Size)	RSC	Resources	Tehachapi Frazier Park
Paris - Loraine	5.7	Minimum 5 Gross Acres/Unit	RVL	Residential Very Low Density	Tehachapi Frazier Park
Paris - Loraine	8.1	Intensive Agriculture (Min. 20 Acre Parcel Size)	RSC	Resources	Tehachapi Frazier Park
Pines of Havilah	1.1	State or Federal Land	Fed/St	Federal/State	Lake Isabella
Pines of Havilah	5.3	Maximum 10 Units/Net Acre	RL	Residential Low Density	Lake Isabella
Pines of Havilah	5.5	Maximum 1 Unit/Net Acre	RVL	Residential Very Low Density	Lake Isabella
Pines of Havilah	5.6	Minimum 2.5 Gross Acres/Unit	RVL	Residential Very Low Density	Lake Isabella
Pines of Havilah	5.7	Minimum 5 Gross Acres/Unit	RVL	Residential Very Low Density	Lake Isabella
Pines of Havilah	6.2	General Commercial	REM	Retail/Medium	Lake Isabella
Pines of Havilah	6.3	Highway Commercial	REH	Retail/Heavy	Lake Isabella
Pines of Havilah	8.5	Resource Management (Min. 20 Acre Parcel Size)	RSC	Resources	Lake Isabella
Pond	8.1	Intensive Agriculture (Min. 20 Acre Parcel Size)	RSC	Resources	Wasco
Randsburg - Johannesburg	5.2	Maximum 16 Units/Net Acre	RM	Residential Medium Density	Southeast Kern
Randsburg - Johannesburg	5.3	Maximum 10 Units/Net Acre	RL	Residential Low Density	Southeast Kern
Randsburg - Johannesburg	6.2	General Commercial	REM	Retail/Medium	Southeast Kern
Randsburg - Johannesburg	7.1	Light Industrial	BP	Basic Production	Southeast Kern
Randsburg - Johannesburg	7.2	Service Industrial	SW	Service/Warehouse	Southeast Kern
Randsburg - Johannesburg	8.2	Resource Reserve (Min. 20 Acre Parcel Size)	RSC	Resources	Southeast Kern
Randsburg - Johannesburg	8.4	Mineral and Petroleum (Min. 5 Acre Parcel Size)	RSC	Resources	Southeast Kern
Ridgecrest Ranchos	5.5	Maximum 1 Unit/Net Acre	RVL	Residential Very Low Density	Indian Wells
Rosamond	1.1	State or Federal Land	Fed/St	Federal/State	Southeast Kern

Rosamond		3.1	Public or Private Recreation Areas	PU	Public Use	Southeast Kern
Rosamond		3.2	Educational Facilities	PU	Public Use	Southeast Kern
Rosamond	3.2/3.1		Educational Facilities/Public or Private Recreation Areas	PU	Public Use	Southeast Kern
Rosamond		3.3	Other Facilities	PU	Public Use	Southeast Kern
Rosamond		5.1	Maximum 29 Units/Net Acre	RH	Residential High Density	Southeast Kern
Rosamond		5.2	Maximum 16 Units/Net Acre	RM	Residential Medium Density	Southeast Kern
Rosamond		5.3	Maximum 10 Units/Net Acre	RL	Residential Low Density	Southeast Kern
Rosamond		5.4	Maximum 4 Units/Net Acre	RL	Residential Low Density	Southeast Kern
Rosamond		5.45	Maximum 2 Units/Net Acre	RVL	Residential Very Low Density	Southeast Kern
Rosamond		5.5	Maximum 1 Unit/Net Acre	RVL	Residential Very Low Density	Southeast Kern
Rosamond		5.6	Minimum 2.5 Gross Acres/Unit	RVL	Residential Very Low Density	Southeast Kern
Rosamond		6.1	Major Commercial	REH	Retail/Heavy	Southeast Kern
Rosamond		6.2	General Commercial	REM	Retail/Medium	Southeast Kern
Rosamond		6.3	Highway Commercial	REH	Retail/Heavy	Southeast Kern
Rosamond		7.1	Light Industrial	BP	Basic Production	Southeast Kern
Rosamond		7.2	Service Industrial	SW	Service/Warehouse	Southeast Kern
Rosamond		7.3	Heavy Industrial	BP	Basic/Production	Southeast Kern
Rosamond		8.1	intensive agriculture (min 20 acre parcel size)	RSC	Resources	Southeast Kern
Rosamond		8.5	Resource Management (Min. 20 Acre Parcel Size)	RSC	Resources	Southeast Kern
San Emidio		3.1	Public or Private Recreation Areas	PU	Public Use	Tehachapi Frazier Park
San Emidio		3.2	Educational Facilities	PU	Public Use	Tehachapi Frazier Park
San Emidio		3.3	Other Facilities	PU	Public Use	Tehachapi Frazier Park
San Emidio		5.1	Maximum 29 Units/Net Acre	RH	Residential High Density	Tehachapi Frazier Park
San Emidio		5.2	Maximum 16 Units/Net Acre	RM	Residential Medium Density	Tehachapi Frazier Park
San Emidio		5.3	Maximum 10 Units/Net Acre	RL	Residential Low Density	Tehachapi Frazier Park
San Emidio		6.1	Major Commercial	REH	Retail/Heavy	Tehachapi Frazier Park
San Emidio		6.2	General Commercial	REM	Retail/Medium	Tehachapi Frazier Park
San Emidio		6.3	Highway Commercial	REH	Retail/Heavy	Tehachapi Frazier Park
San Emidio		7.1	Light Industrial	BP	Basic Production	Tehachapi Frazier Park
San Emidio		7.2	Service Industrial	SW	Service/Warehouse	Tehachapi Frazier Park
San Emidio		8.3	Extensive Agriculture (Min. 20 Acre Parcel Size)	RSC	Resources	Tehachapi Frazier Park
San Emidio		8.5	Resource Management (Min. 20 Acre Parcel Size)	RSC	Resources	Tehachapi Frazier Park
Sand Canyon		3.1	Public or Private Recreation Areas	PU	Public Use	Tehachapi Frazier Park
Sand Canyon		5.6	Minimum 2.5 Gross Acres/Unit	RVL	Residential Very Low Density	Tehachapi Frazier Park
Sand Canyon		5.7	Minimum 5 Gross Acres/Unit	RVL	Residential Very Low Density	Tehachapi Frazier Park
Sand Canyon		5.75	Minimum 10 Gross Acres/Unit	RVL	Residential Very Low Density	Tehachapi Frazier Park
Sand Canyon		5.8	Minimum 20 Gross Acres/Unit	RVL	Residential Very Low Density	Tehachapi Frazier Park
Sand Canyon		6.2	General Commercial	REM	Retail/Medium	Tehachapi Frazier Park

Sand Canyon		8.5	Resource Management (Min. 20 Acre Parcel Size)	RSC	Resources	Tehachapi Frazier Park
Soledad Mtn. - Elephant Butte	Greenbelt		Greenbelt	RSC	Resources	Southeast Kern
Soledad Mtn. - Elephant Butte	Low Density Residen*		Soledad Mtn. - Elephant Butte	RL	Residential Low Density	Southeast Kern
Soledad Mtn. - Elephant Butte	Medium Density Resi*		Soledad Mtn. - Elephant Butte	RM	Residential Medium Density	Southeast Kern
Soledad Mtn. - Elephant Butte	Mineral Extraction *		Soledad Mtn. - Elephant Butte	RSC	Resources	Southeast Kern
Soledad Mtn. - Elephant Butte	Public Lands		Public Lands	PU	Public Use	Southeast Kern
Soledad Mtn. - Elephant Butte	Tourist Oriented		Tourist Oriented	REM	Retail/Medium	Southeast Kern
South Inyokern	Low Density Residential		Low Density Residential	RL	Residential Low Density	Indian Wells
South Inyokern	Open Space		Open Space	RSC	Resources	Indian Wells
South Inyokern	Recreation		Recreation	PU	Public Use	Indian Wells
South Kern Industrial Center		3.3	Other Facilities	PU	Public Use	West Kern
South Kern Industrial Center		7.3	Heavy Industrial	BP	Basic/Production	West Kern
South Lake Isabella	Agriculture		Agriculture	RSC	Resources	Lake Isabella
South Lake Isabella	General Commercial		General Commercial	REH	Retail/Heavy	Lake Isabella
South Lake Isabella	High Density Residential		High Density Residential	RH	Residential High Density	Lake Isabella
South Lake Isabella	Light Industrial		Light Industrial	BP	Basic/Production	Lake Isabella
South Lake Isabella	Low Density Residential		Low Density Residential	RL	Residential Low Density	Lake Isabella
South Lake Isabella	Medium Density Residential		Medium Density Residential	RM	Residential Medium Density	Lake Isabella
South Lake Isabella	Open Space		Open Space	RSC	Resources	Lake Isabella
South Lake Isabella	Rural Residential		Rural Residential	RVL	Residential Very Low Density	Lake Isabella
South Lake Isabella	State or Federal Land		State or Federal Land	Fed/St	Federal/State Land	Lake Isabella
South Lake Isabella	Tourist Services		Tourist Services	REM	Retail/Medium	Lake Isabella
Tejon Industrial Complex East	GI		General Industrial	BP	Basic/Production	Metro Bakersfield Area
Tejon Industrial Complex East	GI		General Industrial	BP	Basic/Production	Tehachapi Frazier Park
Tejon Mountain Village		3.3		PU	Public Use	Tehachapi Frazier Park
Tejon Mountain Village	5.1/6.3/3.3/3.1			MU	Mixed Use	Tehachapi Frazier Park
Tejon Mountain Village		5.3		RL	Residential Low Density	Tehachapi Frazier Park
Tejon Mountain Village	5.3/6.2/3.1			MU	Mixed Use	Tehachapi Frazier Park
Tejon Mountain Village		5.4		RL	Residential Low Density	Tehachapi Frazier Park
Tejon Mountain Village		5.45		RL	Residential Low Density	Tehachapi Frazier Park
Tejon Mountain Village		5.5		RVL	Residential Very Low Density	Tehachapi Frazier Park
Tejon Mountain Village		5.6	Minimum 2.5 Gross Acres/Unit	RVL	Residential Very Low Density	Tehachapi Frazier Park
Tejon Mountain Village		5.7	Minimum 5 Gross Acres/Unit	RVL	Residential Very Low Density	Tehachapi Frazier Park
Tejon Mountain Village		8.5		RSC	Resources	Tehachapi Frazier Park
Tupman		3.1	Public or Private Recreation Areas	PU	Public Use	West Kern
Tupman		3.2	Educational Facilities	PU	Public Use	West Kern
Tupman		5.3	Maximum 10 Units/Net Acre	RL	Residential Low Density	West Kern
Tupman		5.6	Minimum 2.5 Gross Acres/Unit	RVL	Residential Very Low Density	West Kern

Tupman		6.2	General Commercial	REM	Retail/Medium	West Kern
Tupman		7.1	Light Industrial	BP	Basic Production	West Kern
Tupman		8.4	Mineral and Petroleum (Min. 5 Acre Parcel Size)	RSC	Resources	West Kern
Twin Oaks		5.6	Minimum 2.5 Gross Acres/Unit	RVL	Residential Very Low Density	Tehachapi Frazier Park
Twin Oaks		6.2	General Commercial	REM	Retail/Medium	Tehachapi Frazier Park
Twin Oaks		8.3	Extensive Agriculture (Min. 20 Acre Parcel Size)	RSC	Resources	Tehachapi Frazier Park
Twin Oaks		8.5	Interim Rural Community Plan	RSC	Resources	Tehachapi Frazier Park
Valley Acres		3.1	Public or Private Recreation Areas	PU	Public Use	West Kern
Valley Acres		5.45	Maximum 2 Units/Net Acre	RVL	Residential Very Low Density	West Kern
Valley Acres		5.5	Maximum 1 Unit/Net Acre	RVL	Residential Very Low Density	West Kern
Valley Acres		5.6	Minimum 2.5 Gross Acres/Unit	RVL	Residential Very Low Density	West Kern
Valley Acres		6.2	General Commercial	REM	Retail/Medium	West Kern
Valley Acres		7.1	Light Industrial	BP	Basic Production	West Kern
Valley Acres		8.1	Intensive Agriculture (Min. 20 Acre Parcel Size)	RSC	Resources	West Kern
Valley Acres		8.4	Mineral and Petroleum (Min. 5 Acre Parcel Size)	RSC	Resources	West Kern
Ventura Westlake		5.3	Maximum 10 Units/Net Acre	RL	Residential Low Density	Southeast Kern
West Edwards Road Settlement		1.1	State or Federal Land	Fed/St	Federal/State	Southeast Kern
West Edwards Road Settlement		5.6	Minimum 2.5 Gross Acres/Unit	RVL	Residential Very Low Density	Southeast Kern
West Edwards Road Settlement		6.2	General Commercial	REM	Retail/Medium	Southeast Kern
West Edwards Road Settlement		8.5	Resource Management (Min. 20 Acre Parcel Size)	RSC	Resources	Southeast Kern
Western Rosedale	ER		Estate Residential	RVL	Residential Very Low Density	Metro Bakersfield Area
Western Rosedale	HI		Heavy Industrial	BP	Basic/Production	Metro Bakersfield Area
Western Rosedale	R-IA		Intensive Agriculture	RSC	Resources	Metro Bakersfield Area
Western Rosedale	SI		Service Industrial	SW	Service/Warehouse	Metro Bakersfield Area
Willow Springs		1.1	State or Federal Land	Fed/St	Federal/State	Southeast Kern
Willow Springs	1.1/3.4		State or Federal Land/Solid Waste Facilities	Fed/St	Federal/State	Southeast Kern
Willow Springs		3.1	Public or Private Recreation Areas	PU	Public Use	Southeast Kern
Willow Springs		3.2	Educational Facilities	PU	Public Use	Southeast Kern
Willow Springs		3.3	Other Facilities	PU	Public Use	Southeast Kern
Willow Springs		4.2	Rural Community	MU	Mixed Use	Southeast Kern
Willow Springs		5.1	Maximum 29 Units/Net Acre	RH	Residential High Density	Southeast Kern
Willow Springs		5.3	Maximum 10 Units/Net Acre	RL	Residential Low Density	Southeast Kern
Willow Springs	5.3/4.4		Maximum 10 Units/Net Acre/Comprehensive Plan Area	RL	Residential Low Density	Southeast Kern
Willow Springs		5.4	Maximum 4 Units/Net Acre	RL	Residential Low Density	Southeast Kern
Willow Springs	5.4/4.4		Maximum 4 Units/Net Acre/Comprehensive Plan Area	RL	Residential Low Density	Southeast Kern
Willow Springs		5.45	Maximum 2 Units/Net Acre	RVL	Residential Very Low Density	Southeast Kern
Willow Springs		5.5	Maximum 1 Unit/Net Acre	RVL	Residential Very Low Density	Southeast Kern
Willow Springs	5.5/4.4		Maximum 1 Unit/Net Acre/Comprehensive Plan Area	RVL	Residential Very Low Density	Southeast Kern

Willow Springs		5.6	Minimum 2.5 Gross Acres/Unit	RVL	Residential Very Low Density	Southeast Kern
Willow Springs		5.7	Minimum 5 Gross Acres/Unit	RVL	Residential Very Low Density	Southeast Kern
Willow Springs		5.75	Minimum 10 Gross Acres/Unit	RVL	Residential Very Low Density	Southeast Kern
Willow Springs		5.8	Minimum 20 Gross Acres/Unit	RVL	Residential Very Low Density	Southeast Kern
Willow Springs		6.2	General Commercial	REM	Retail/Medium	Southeast Kern
Willow Springs	6.2/4.4		General Commercial/Comprehensive Plan Area	REM	Retail/Medium	Southeast Kern
Willow Springs		6.3	Highway Commercial	REH	Retail/Heavy	Southeast Kern
Willow Springs		7.1	Light Industrial	BP	Basic Production	Southeast Kern
Willow Springs	7.1/4.4		Light Industrial/Comprehensive Plan Area	BP	Basic Production	Southeast Kern
Willow Springs		7.2	Service Industrial	SW	Service/Warehouse	Southeast Kern
Willow Springs	7.2/4.4		Service Industrial/Comprehensive Plan Area	SW	Service/Warehouse	Southeast Kern
Willow Springs		8.1	Intensive Agriculture (Min. 20 Acre Parcel Size)	RSC	Resources	Southeast Kern
Willow Springs		8.2	Resource Reserve (Min. 20 Acre Parcel Size)	RSC	Resources	Southeast Kern
Willow Springs		8.3	Extensive Agriculture (Min. 20 Acre Parcel Size)	RSC	Resources	Southeast Kern
Willow Springs		8.4	Mineral and Petroleum (Min. 5 Acre Parcel Size)	RSC	Resources	Southeast Kern
Willow Springs		8.5	Resource Management (Min. 20 Acre Parcel Size)	RSC	Resources	Southeast Kern
Woody		3.1	Public or Private Recreation Areas	PU	Public Use	Lake Isabella
Woody		3.3	Other Facilities	PU	Public Use	Lake Isabella
Woody		5.4	Maximum 4 Units/Net Acre	RL	Residential Low Density	Lake Isabella
Woody		5.5	Maximum 1 Unit/Net Acre	RVL	Residential Very Low Density	Lake Isabella
Woody		5.6	Minimum 2.5 Gross Acres/Unit	RVL	Residential Very Low Density	Lake Isabella
Woody		5.7	Minimum 5 Gross Acres/Unit	RVL	Residential Very Low Density	Lake Isabella
Woody		6.2	General Commercial	REM	Retail/Medium	Lake Isabella
Woody		8.3	Extensive Agriculture (Min. 20 Acre Parcel Size)	RSC	Resources	Lake Isabella
Woody		8.5	Resource Management (Min. 20 Acre Parcel Size)	RSC	Resources	Lake Isabella

Jurisdiction	General Plan	General Plan Description	Upland Code	Upland Description	SUBREGION
Aerial Acres	3.1	Specific Plan Required	PU	Public Use	Southeast Kern
Aerial Acres	3.3	Specific Plan Required	PU	Public Use	Southeast Kern
Aerial Acres	5.5	Specific Plan Required	RVL	Residential Very Low Density	Southeast Kern
Aerial Acres	5.6	Specific Plan Required	RVL	Residential Very Low Density	Southeast Kern
Aerial Acres	8.3	Specific Plan Required	RSC	Resources	Southeast Kern
Alpine Forest Park	3.1	Specific Plan Required	PU	Public Use	Tehachapi Frazier Park
Alpine Forest Park	3.2	Specific Plan Required	PU	Public Use	Tehachapi Frazier Park
Alpine Forest Park	3.3	Specific Plan Required	PU	Public Use	Tehachapi Frazier Park
Alpine Forest Park	5.4	Specific Plan Required	RL	Residential Low Density	Tehachapi Frazier Park
Alpine Forest Park	5.5	Specific Plan Required	RVL	Residential Very Low Density	Tehachapi Frazier Park
Alpine Forest Park	6.2	Specific Plan Required	REM	Retail/Medium	Tehachapi Frazier Park
Alpine Forest Park	8.2	Specific Plan Required	RSC	Resources	Tehachapi Frazier Park
Ancient Valley	3.1	Specific Plan Required	PU	Public Use	Southeast Kern
Ancient Valley	3.2	Specific Plan Required	PU	Public Use	Southeast Kern
Ancient Valley	3.3	Specific Plan Required	PU	Public Use	Southeast Kern
Ancient Valley	5.4	Specific Plan Required	RL	Residential Low Density	Southeast Kern
Ancient Valley	5.5	Specific Plan Required	RVL	Residential Very Low Density	Southeast Kern
Ancient Valley	6.2	Specific Plan Required	REM	Retail/Medium	Southeast Kern
Ancient Valley	7.1	Specific Plan Required	BP	Basic Production	Southeast Kern
Ancient Valley	7.2	Specific Plan Required	SW	Service/Warehouse	Southeast Kern
Ancient Valley	8.5	Specific Plan Required	RSC	Resources	Southeast Kern
Bear Trap	3.1	Specific Plan Required	PU	Public Use	Tehachapi Frazier Park
Bear Trap	5.3	Specific Plan Required	RL	Residential Low Density	Tehachapi Frazier Park
Bear Trap	8.2	Specific Plan Required	RSC	Resources	Tehachapi Frazier Park
Bella Vista Hills	3.1	Specific Plan Required	PU	Public Use	Lake Isabella
Bella Vista Hills	3.3	Specific Plan Required	PU	Public Use	Lake Isabella
Bella Vista Hills	5.2	Specific Plan Required	RM	Residential Medium Density	Lake Isabella
Bella Vista Hills	5.3	Specific Plan Required	RL	Residential Low Density	Lake Isabella
Bella Vista Hills	5.4	Specific Plan Required	RL	Residential Low Density	Lake Isabella
Bella Vista Hills	5.5	Specific Plan Required	RL	Residential Low Density	Lake Isabella
Bella Vista Hills	5.6	Specific Plan Required	RVL	Residential Very Low Density	Lake Isabella
Bella Vista Hills	5.7	Specific Plan Required	RVL	Residential Very Low Density	Lake Isabella
Bella Vista Hills	6.2	Specific Plan Required	REM	Retail/Medium	Lake Isabella

Bella Vista Hills	8.5	Specific Plan Required	RSC	Resources	Lake Isabella
Castac	3.1	Specific Plan Required	PU	Public Use	Tehachapi Frazier Park
Castac	3.2	Specific Plan Required	PU	Public Use	Tehachapi Frazier Park
Castac	3.3	Specific Plan Required	PU	Public Use	Tehachapi Frazier Park
Castac	5.3	Specific Plan Required	RL	Residential Low Density	Tehachapi Frazier Park
Castac	6.2	Specific Plan Required	REM	Retail/Medium	Tehachapi Frazier Park
Castac	8.3	Specific Plan Required	RSC	Resources	Tehachapi Frazier Park
Commanche	3.1	Specific Plan Required	PU	Public Use	Tehachapi Frazier Park
Commanche	3.2	Specific Plan Required	PU	Public Use	Tehachapi Frazier Park
Commanche	5.3	Specific Plan Required	RL	Residential Low Density	Tehachapi Frazier Park
Commanche	6.2	Specific Plan Required	REM	Retail/Medium	Tehachapi Frazier Park
Commanche	8.3	Specific Plan Required	RSC	Resources	Tehachapi Frazier Park
Cottonwood	3.1	Specific Plan Required	PU	Public Use	Tehachapi Frazier Park
Cottonwood	3.2	Specific Plan Required	PU	Public Use	Tehachapi Frazier Park
Cottonwood	5.3	Specific Plan Required	RL	Residential Low Density	Tehachapi Frazier Park
Cottonwood	6.2	Specific Plan Required	REM	Retail/Medium	Tehachapi Frazier Park
Cottonwood	8.2	Specific Plan Required	RSC	Resources	Tehachapi Frazier Park
Cummings Peak	5.8	Specific Plan Required	RVL	Residential Very Low Density	Tehachapi Frazier Park
Cummings Peak	8.1	Specific Plan Required	RSC	Resources	Tehachapi Frazier Park
Cummings Ranch	8.5	Specific Plan Required	RSC	Resources	Tehachapi Frazier Park
Dutch Flat	3.1	Specific Plan Required	PU	Public Use	Lake Isabella
Dutch Flat	5.5	Specific Plan Required	RVL	Residential Very Low Density	Lake Isabella
Dutch Flat	5.6	Specific Plan Required	RVL	Residential Very Low Density	Lake Isabella
Dutch Flat	5.7	Specific Plan Required	RVL	Residential Very Low Density	Lake Isabella
Dutch Flat	5.8	Specific Plan Required	RVL	Residential Very Low Density	Lake Isabella
Dutch Flat	6.2	Specific Plan Required	REM	Retail/Medium	Lake Isabella
Dutch Flat	8.1	Specific Plan Required	RSC	Resources	Lake Isabella
Grapevine Commercial	6.2	Specific Plan Required	REM	Retail/Medium	Tehachapi Frazier Park
Grapevine Commercial	8.1	Specific Plan Required	RSC	Resources	Tehachapi Frazier Park
Hot Springs Valley	3.1	Specific Plan Required	PU	Public Use	Lake Isabella
Hot Springs Valley	3.2	Specific Plan Required	PU	Public Use	Lake Isabella
Hot Springs Valley	5.4	Specific Plan Required	RL	Residential Low Density	Lake Isabella
Hot Springs Valley	6.2	Specific Plan Required	REM	Retail/Medium	Lake Isabella
Hot Springs Valley	8.1	Specific Plan Required	RSC	Resources	Lake Isabella

Hudson Ranch	5.5	Specific Plan Required	RVL	Residential Very Low Density	Tehachapi Frazier Park
Joshua Heights	3.1	Specific Plan Required	PU	Public Use	Southeast Kern
Joshua Heights	3.2	Specific Plan Required	PU	Public Use	Southeast Kern
Joshua Heights	3.3	Specific Plan Required	PU	Public Use	Southeast Kern
Joshua Heights	5.6	Specific Plan Required	RVL	Residential Very Low Density	Southeast Kern
Joshua Heights	5.6	Specific Plan Required	RVL	Residential Very Low Density	Tehachapi Frazier Park
Joshua Heights	6.2	Specific Plan Required	REM	Retail/Medium	Southeast Kern
Joshua Heights	8.1	Specific Plan Required	RSC	Resources	Southeast Kern
Lebec	6.1	Specific Plan Required	REH	Retail/Heavy	Tehachapi Frazier Park
Lebec	6.3	Specific Plan Required	REH	Retail/Heavy	Tehachapi Frazier Park
Los Alamos	5.7	Specific Plan Required	RVL	Residential Very Low Density	Tehachapi Frazier Park
Los Alamos	8.3	Specific Plan Required	RSC	Resources	Tehachapi Frazier Park
Mackenzie	3.1	Specific Plan Required	PU	Public Use	Tehachapi Frazier Park
Mackenzie	5.5	Specific Plan Required	RVL	Residential Very Low Density	Tehachapi Frazier Park
Mackenzie	8.5	Specific Plan Required	RSC	Resources	Tehachapi Frazier Park
Natcha Mesa	3.1	Specific Plan Required	PU	Public Use	Tehachapi Frazier Park
Natcha Mesa	3.2	Specific Plan Required	PU	Public Use	Tehachapi Frazier Park
Natcha Mesa	5.3	Specific Plan Required	RL	Residential Low Density	Tehachapi Frazier Park
Natcha Mesa	6.2	Specific Plan Required	REM	Retail/Medium	Tehachapi Frazier Park
Natcha Mesa	8.3	Specific Plan Required	RSC	Resources	Tehachapi Frazier Park
Neumarkel	5.5	Specific Plan Required	RVL	Residential Very Low Density	Metro Bakersfield Area
Neumarkel	6.3	Specific Plan Required	REH	Retail/Heavy	Metro Bakersfield Area
Neumarkel	6.3	Specific Plan Required	REH	Retail/Heavy	Tehachapi Frazier Park
Neumarkel	8.1	Specific Plan Required	RSC	Resources	Metro Bakersfield Area
Neumarkel	8.1	Specific Plan Required	RSC	Resources	Tehachapi Frazier Park
Oso Canyon	3.1	Specific Plan Required	PU	Public Use	Tehachapi Frazier Park
Oso Canyon	3.2	Specific Plan Required	PU	Public Use	Tehachapi Frazier Park
Oso Canyon	5.3	Specific Plan Required	RL	Residential Low Density	Tehachapi Frazier Park
Oso Canyon	6.2	Specific Plan Required	REM	Retail/Medium	Tehachapi Frazier Park
Oso Canyon	8.3	Extensive Agriculture- minimum 80-acre parcel size for lands under "Williamson Act" contract; 20-acre minimum, lands not under contract	RSC	Resources	Tehachapi Frazier Park
Rattlesnake Springs	3.1	Specific Plan Required	PU	Public Use	Lake Isabella
Rattlesnake Springs	3.2	Specific Plan Required	PU	Public Use	Lake Isabella
Rattlesnake Springs	3.3	Specific Plan Required	PU	Public Use	Lake Isabella

Rattlesnake Springs	5.1	Specific Plan Required	RH	Residential High Density	Lake Isabella
Rattlesnake Springs	5.2	Specific Plan Required	RM	Residential Medium Density	Lake Isabella
Rattlesnake Springs	5.3	Specific Plan Required	RL	Residential Low Density	Lake Isabella
Rattlesnake Springs	5.4	Specific Plan Required	RL	Residential Low Density	Lake Isabella
Rattlesnake Springs	5.5	Specific Plan Required	RVL	Residential Very Low Density	Lake Isabella
Rattlesnake Springs	5.8	Specific Plan Required	RVL	Residential Very Low Density	Lake Isabella
Rattlesnake Springs	6.1	Specific Plan Required	REH	Retail/Heavy	Lake Isabella
Rattlesnake Springs	6.2	Specific Plan Required	REM	Retail/Medium	Lake Isabella
Rattlesnake Springs	8.5	Specific Plan Required	RSC	Resources	Lake Isabella
Saltdale	3.1	Specific Plan Required	PU	Public Use	Southeast Kern
Saltdale	5.6	Specific Plan Required	RVL	Residential Very Low Density	Southeast Kern
Saltdale	6.3	Specific Plan Required	REH	Retail/Heavy	Southeast Kern
Saltdale	7.2	Specific Plan Required	SW	Service/Warehouse	Southeast Kern
Saltdale	8.1	Specific Plan Required	RSC	Resources	Southeast Kern
Sorrell Peak	3.3	Specific Plan Required	PU	Public Use	Lake Isabella
Sorrell Peak	5.7	Specific Plan Required	RVL	Residential Very Low Density	Lake Isabella
Sorrell Peak	6.3	Specific Plan Required	REH	Retail/Heavy	Lake Isabella
Sorrell Peak	8.3	Specific Plan Required	RSC	Resources	Lake Isabella
Stallion Springs (Phase III)	3.1	Specific Plan Required	PU	Public Use	Tehachapi Frazier Park
Stallion Springs (Phase III)	3.2	Specific Plan Required	PU	Public Use	Tehachapi Frazier Park
Stallion Springs (Phase III)	3.3	Specific Plan Required	PU	Public Use	Tehachapi Frazier Park
Stallion Springs (Phase III)	3.4	Specific Plan Required	PU	Public Use	Tehachapi Frazier Park
Stallion Springs (Phase III)	5.5	Specific Plan Required	RVL	Residential Very Low Density	Tehachapi Frazier Park
Stallion Springs (Phase III)	8.3	Specific Plan Required	RSC	Resources	Tehachapi Frazier Park
Tejon Canyon North	3.1	Specific Plan Required	PU	Public Use	Tehachapi Frazier Park
Tejon Canyon North	3.2	Specific Plan Required	PU	Public Use	Tehachapi Frazier Park
Tejon Canyon North	5.3	Specific Plan Required	RL	Residential Low Density	Tehachapi Frazier Park
Tejon Canyon North	8.3	Specific Plan Required	RSC	Resources	Tehachapi Frazier Park
Tejon Canyon Resort	6.2	Specific Plan Required	REM	Retail/Medium	Tehachapi Frazier Park
Tejon Canyon Resort	8.1	Specific Plan Required	RSC	Resources	Tehachapi Frazier Park
Tejon Canyon South	3.1	Specific Plan Required	PU	Public Use	Tehachapi Frazier Park
Tejon Canyon South	3.2	Specific Plan Required	PU	Public Use	Tehachapi Frazier Park
Tejon Canyon South	5.3	Specific Plan Required	RL	Residential Low Density	Tehachapi Frazier Park
Tejon Canyon South	6.2	Specific Plan Required	REM	Retail/Medium	Tehachapi Frazier Park

Tejon Canyon South	8.3	Specific Plan Required	RSC	Resources	Tehachapi Frazier Park
Tejon Creek No. 1	3.1	Specific Plan Required	PU	Public Use	Tehachapi Frazier Park
Tejon Creek No. 1	3.2	Specific Plan Required	PU	Public Use	Tehachapi Frazier Park
Tejon Creek No. 1	5.3	Specific Plan Required	RL	Residential Low Density	Tehachapi Frazier Park
Tejon Creek No. 1	6.2	Specific Plan Required	REM	Retail/Medium	Tehachapi Frazier Park
Tejon Creek No. 1	8.3	Specific Plan Required	RSC	Resources	Tehachapi Frazier Park
Tejon Creek No. 2	6.2	Specific Plan Required	REM	Retail/Medium	Tehachapi Frazier Park
Tejon Hills	3.1	Specific Plan Required	PU	Public Use	Tehachapi Frazier Park
Tejon Hills	5.7	Specific Plan Required	RVL	Residential Very Low Density	Tehachapi Frazier Park
Tejon Hills	8.2	Specific Plan Required	RSC	Resources	Tehachapi Frazier Park
Tunis Creek	3.1	Specific Plan Required	PU	Public Use	Tehachapi Frazier Park
Tunis Creek	3.2	Specific Plan Required	PU	Public Use	Tehachapi Frazier Park
Tunis Creek	5.3	Specific Plan Required	RL	Residential Low Density	Tehachapi Frazier Park
Tunis Creek	6.2	Specific Plan Required	REM	Retail/Medium	Tehachapi Frazier Park
Tunis Creek	8.1	Specific Plan Required	RSC	Resources	Tehachapi Frazier Park
Tunis Creek	8.3	Specific Plan Required	RSC	Resources	Tehachapi Frazier Park
Tunis Ridge	3.1	Specific Plan Required	PU	Public Use	Tehachapi Frazier Park
Tunis Ridge	3.2	Specific Plan Required	PU	Public Use	Tehachapi Frazier Park
Tunis Ridge	5.3	Specific Plan Required	RL	Residential Low Density	Tehachapi Frazier Park
Tunis Ridge	6.2	Specific Plan Required	REM	Retail/Medium	Tehachapi Frazier Park
Tunis Ridge	8.3	Specific Plan Required	RSC	Resources	Tehachapi Frazier Park
Vista Peak No. 1	3.1	Specific Plan Required	PU	Public Use	Tehachapi Frazier Park
Vista Peak No. 1	3.2	Specific Plan Required	PU	Public Use	Tehachapi Frazier Park
Vista Peak No. 1	5.3	Specific Plan Required	RL	Residential Low Density	Tehachapi Frazier Park
Vista Peak No. 1	8.3	Specific Plan Required	RSC	Resources	Tehachapi Frazier Park
Vista Peak No. 2	3.1	Specific Plan Required	PU	Public Use	Tehachapi Frazier Park
Vista Peak No. 2	3.2	Specific Plan Required	PU	Public Use	Tehachapi Frazier Park
Vista Peak No. 2	5.3	Specific Plan Required	RL	Residential Low Density	Tehachapi Frazier Park
Vista Peak No. 2	8.2	Specific Plan Required	RSC	Resources	Tehachapi Frazier Park
White Wolf	3.1	Specific Plan Required	PU	Public Use	Tehachapi Frazier Park
White Wolf	3.3	Specific Plan Required	PU	Public Use	Tehachapi Frazier Park
White Wolf	5.3	Specific Plan Required	RL	Residential Low Density	Tehachapi Frazier Park
White Wolf	6.1	Specific Plan Required	REH	Retail/Heavy	Tehachapi Frazier Park
White Wolf	6.2	Specific Plan Required	REM	Retail/Medium	Tehachapi Frazier Park

White Wolf	6.3	Specific Plan Required	REH	Retail/Heavy	Tehachapi Frazier Park
White Wolf	8.3	Specific Plan Required	RSC	Resources	Tehachapi Frazier Park
Winters Ridge	3.1	Specific Plan Required	PU	Public Use	Tehachapi Frazier Park
Winters Ridge	5.3	Specific Plan Required	RL	Residential Low Density	Tehachapi Frazier Park
Winters Ridge	6.2	Specific Plan Required	REM	Retail/Medium	Tehachapi Frazier Park
Winters Ridge	8.3	Specific Plan Required	RSC	Resources	Tehachapi Frazier Park

Jurisdiction	General Plan	General Plan Description	Uplan Code	Uplan Description	SUBREGION
Maricopa	A	Agriculture	RSC	Resources	West Kern
Maricopa	CH	Commercial highway	REH	Retail/Heavy	West Kern
Maricopa	CR	Commercial/Retail	REM	Retail/Medium	West Kern
Maricopa	FP	Flood Path	PU	Public Use	West Kern
Maricopa	I	Industrial	BP	Basic/Production	West Kern
Maricopa	OS	Open Space	RSC	Resources	West Kern
Maricopa	P	Park	PU	Public Use	West Kern
Maricopa	PUB	Public	PU	Public Use	West Kern
Maricopa	RLD	Residential Low Density	RL	Residential Low Density	West Kern
Maricopa	RMD	Residential Medium Density	RM	Residential Medium Density	West Kern
Maricopa	RR	Rural Residential	RL	Residential Low Density	West Kern

Jurisdiction	General Plan	General Plan Description	Upland Code	Upland Description	SUBREGION
McFarland	A	Agriculture	RSC	Resources	Delano McFarland
McFarland	C	Church	PU	Public Use	Delano McFarland
McFarland	CH	Church	PU	Public Use	Delano McFarland
McFarland	EP	Existing Park	PU	Public Use	Delano McFarland
McFarland	G	Government	PU	Public Use	Delano McFarland
McFarland	H	Heavy Commercial	REH	Retail/Heavy	Delano McFarland
McFarland	HD	High Density	RH	Residential High Density	Delano McFarland
McFarland	HS	Highway Service	REH	Retail/Heavy	Delano McFarland
McFarland	I	Government	PU	Public Use	Delano McFarland
McFarland	LD	Low Density	RL	Residential Low Density	Delano McFarland
McFarland	LI	Light Industrial	BP	Basic/Production	Delano McFarland
McFarland	M	Manufacturing	SW	Service/Warehouse	Delano McFarland
McFarland	MD	Medium Density	RM	Residential Medium Density	Delano McFarland
McFarland	MH	Medium High Density	RH	Residential High Density	Delano McFarland
McFarland	P	Existing Park	PU	Public Use	Delano McFarland
McFarland	PP	Proposed Park	PU	Public Use	Delano McFarland
McFarland	R	McFarland	RSC	Resources	Delano McFarland
McFarland	RR	Residential Reserve	RVL	Residential Very Low Density	Delano McFarland
McFarland	S	School	PU	Public Use	Delano McFarland
McFarland	SM	Shopping Mall	REM	Retail/Medium	Delano McFarland
McFarland	UR	Urban Reserve	MU	Mixed Use	Delano McFarland

Jurisdiction	General Plan Code	General Plan Description	Uplan Code	Uplan Description	SUBREGION
Ridgecrest	C	Commercial- min 20,000 sqft w/ 14.1-29 d.u./ gross acre	REH	Retail/Heavy	Indian Wells
Ridgecrest	CD	Commercial Downtown- 14.1-29 d.u./gross acre	REM	Retail/Medium	Indian Wells
Ridgecrest	CV	Commercial Village- min. 10,000 sqft w/ 14.1-29 d.u./gross acre	REM	Retail/Medium	Indian Wells
Ridgecrest	I	Industrial- min. 20,000 sqft	SW	Service/Warehouse	Indian Wells
Ridgecrest	IS	Institutional	PU	Public Use	Indian Wells
Ridgecrest	MIL	Military	Fed/St	Fed/St	Indian Wells
Ridgecrest	OS	Open Space- min 20,000 sqft w/ 1 unit/lot	RSC	Resources	Indian Wells
Ridgecrest	P	Parks	PU	Public Use	Indian Wells
Ridgecrest	RE	Residential Estate Density- min 20,000 sqft w/ 1.1-2.0 d.u/gross acre	RVL	Residential Very Low Density	Indian Wells
Ridgecrest	RL	Residential Low Density- min 6,000 sqft w/ 2.1-5.0 d.u/gross acre	RL	Residential Low Density	Indian Wells
Ridgecrest	RM	Residential Medium Density- min 3,000 sqft w/ 5.1-14.0 d.u/gross acre	RL	Residential Low Density	Indian Wells
Ridgecrest	RR	Residential Rural Density- min 40,000 sqft w/ 0-1 d.u/gross acre	RVL	Residential Very Low Density	Indian Wells
Ridgecrest	RT	Residential Estate	RL	Residential Low Density	Indian Wells
Ridgecrest	RX	Residential Large Lot- min 2.5 acres w/ 0-.4 d.u/gross acre	RVL	Residential Very Low Density	Indian Wells

Jurisdiction	General Plan Code	General Plan Description	Uplan Code	Uplan Description	SUBREGION
Shafter	AOS	Agriculture/Open Space	RSC	Resources	Metro Bakersfield Area
Shafter	AOS	Agriculture/Open Space	RSC	Resources	Wasco
Shafter	BP	Business Park	SW	Service/Warehouse	Metro Bakersfield Area
Shafter	Canal	Canal/Right of Way	PU	Public Use	Metro Bakersfield Area
Shafter	CF	Community Facilities	PU	Public Use	Metro Bakersfield Area
Shafter	CPO	Commercial/Professional Office	SO	Service/Office	Metro Bakersfield Area
Shafter	I	Industrial	SW	Service/Warehouse	Metro Bakersfield Area
Shafter	LDR	Low Density Residential- 5d.u/ac	RL	Residential Low Density	Metro Bakersfield Area
Shafter	LDR	Low Density Residential- 5d.u/ac	RL	Residential Low Density	Wasco
Shafter	MHR	Medium High Density Residential- 20 d.u/ac	RM	Residential Medium Density	Metro Bakersfield Area
Shafter	MR	Medium Density Residential- 10d.u/ac	RL	Residential Low Density	Metro Bakersfield Area
Shafter	OS	Recreation/Open Space	PU	Public Use	Metro Bakersfield Area
Shafter	PS	Parks and Schools	PU	Public Use	Metro Bakersfield Area
Shafter	RC	Rural Community- 1 d.u./ac	RVL	Residential Very Low Density	Metro Bakersfield Area
Shafter	Right-of-Way	Canal/Right of Way	PU	Public Use	Metro Bakersfield Area
Shafter	RM	Resource Management	RSC	Resources	Metro Bakersfield Area
Shafter	RR	Rural Residential- .4 d.u./ac	RVL	Residential Very Low Density	Metro Bakersfield Area
Shafter	Specific Plan	Specific Planning Areas	MU	Mixed Use	Metro Bakersfield Area
Shafter	VLR	Very Low Density Residential- 3.5 d.u/ac	RVL	Residential Very Low Density	Metro Bakersfield Area
Coberly West	C	Commercial: Typical uses will include a supermarket, drugstore, restaurant, and other smaller retail and support services such as banks and video rental stores	SO	Service/Office	Metro Bakersfield Area
Coberly West	ER	Estate Residential: 2.5-4.0 du/ac	RL	Residential Low Density	Metro Bakersfield Area
Coberly West	HOA	Private Recreation	PU	Public Use	Metro Bakersfield Area
Coberly West	LDR	Low Density Residential: 4-7.5 du/ac	RL	Residential Low Density	Metro Bakersfield Area
Coberly West	MDR	Medium Density Residential: 7.5-9 du/ac	RL	Residential Low Density	Metro Bakersfield Area
Coberly West	P	Park	PU	Public Use	Metro Bakersfield Area
Coberly West	PS	Public Service: Typical uses in this area would include a range of public service facilities such as police and fire station, library, post office, clubs and lodges	PU	Public Use	Metro Bakersfield Area
Coberly West	RSC	Resources	RSC	Resources	Metro Bakersfield Area
Coberly West	S	School	PU	Public Use	Metro Bakersfield Area
Coberly West	TG	Trail/Greenbelt	PU	Public Use	Metro Bakersfield Area

Heritage Ranch	C	Commercial: 24-acre commercial complex, neighborhood commercial center (commercial/services, offices) is intended to the specific plan area and adjacent areas	SO	Service/Office	Metro Bakersfield Area
Heritage Ranch	LDR	Low Density Residential: max 3.7 du/ac	RL	Residential Low Density	Metro Bakersfield Area
Heritage Ranch	OS	Recreation/Open Space	RSC	Resources	Metro Bakersfield Area
Heritage Ranch	S	School	PU	Public Use	Metro Bakersfield Area
Heritage Ranch	T	Multi-Use Trails/Paseo	RSC	Resources	Metro Bakersfield Area
Mission Lake	C	Commercial	REH	Retail/Heavy	Metro Bakersfield Area
Mission Lake	Canal	Canal	PU	Public Use	Metro Bakersfield Area
Mission Lake	HOA	Private Recreation	PU	Public Use	Metro Bakersfield Area
Mission Lake	L	Lake	RSC	Resources	Metro Bakersfield Area
Mission Lake	LDR	Low Density Residential 4-7.4 du/ac	RL	Residential Low Density	Metro Bakersfield Area
Mission Lake	MDR	Medium Density Residential 7.5-14 du/ac	RL	Residential Low Density	Metro Bakersfield Area
Mission Lake	MHDR	Medum High Density Residential 18-24 du/ac	RM	Residential Medium Density	Metro Bakersfield Area
Mission Lake	PP	Public Park	PU	Public Use	Metro Bakersfield Area
Mission Lake	S	School	PU	Public Use	Metro Bakersfield Area
Orchard Park	DR	Detached Residential: 3.5 du/ac	RL	Residential Low Density	Metro Bakersfield Area
Orchard Park	OG	Oil/Gas Overlay	RSC	Resources	Metro Bakersfield Area
Orchard Park	P	Public Park	PU	Public Use	Metro Bakersfield Area

Jurisdiction	General Plan	General Plan Description	Upland Code	Upland Description	SUBREGION
Taft	A	Agriculture	RSC	Resources	West Kern
Taft	GC	General Commercial	REH	Retail/Heavy	West Kern
Taft	HDR	High Density Residential	RH	Residential High Density	West Kern
Taft	IND	Industrial	SW	Service/Warehouse	West Kern
Taft	LDR	Low Density Residential	RL	Residential Low Density	West Kern
Taft	MDR	Medium Density Residential	RM	Residential Medium Density	West Kern
Taft	MU	Mixed Use	MU	Mixed Use	West Kern
Taft	NR	Natural Resources	RSC	Resources	West Kern
Taft	OS	Open Space	RSC	Resources	West Kern
Taft	PF	Public Facilities	PU	Public Use	West Kern
Taft	RE	Residential Estate	RVL	Residential Very Low Density	West Kern
Taft	RR	Rural Residential	RVL	Residential Very Low Density	West Kern

Jurisdiction	General Plan Code	General Plan Description	Uplan Code	Uplan Description	SUBREGION
Tehachapi	AG	Agricultural/Rural	RSC	Resources	Tehachapi Frazier Park
Tehachapi	AIRPORT	Airport	PU	Public Use	Tehachapi Frazier Park
Tehachapi	CC	Community Commercial	REH	Retail/Heavy	Tehachapi Frazier Park
Tehachapi	CV	Village Commercial	REH	Retail/Heavy	Tehachapi Frazier Park
Tehachapi	DRAIN	Drain	RSC	Resources	Tehachapi Frazier Park
Tehachapi	HDR	High Density Residential- up to 18 d.u./gross acre	RH	Residential High Density	Tehachapi Frazier Park
Tehachapi	HI	Heavy Industrial	BP	Basic/Production	Tehachapi Frazier Park
Tehachapi	LI	Light Industrial	BP	Basic/Production	Tehachapi Frazier Park
Tehachapi	MDR	Medium Density Residential- up to 12 d.u./gross acre	RM	Residential Medium Density	Tehachapi Frazier Park
Tehachapi	NR	Neighborhood Residential- up to 4.5 d.u./acre	RL	Residential Low Density	Tehachapi Frazier Park
Tehachapi	OS	Open Space	RSC	Resources	Tehachapi Frazier Park
Tehachapi	RE	Residential Estate	RVL	Residential Very Low Density	Tehachapi Frazier Park
Tehachapi	SCHOOL	School	PU	Public Use	Tehachapi Frazier Park
Tehachapi	SPA	Specific Planning Areas	MU	Mixed Use	Tehachapi Frazier Park

Jurisdiction	General Plan Code	General Plan Description	Uplan Code	Uplan Description	SUBREGION
Wasco	AE	Exclusive Agriculture	RSC	Resources	Delano McFarland
Wasco	AE	Exclusive Agriculture	RSC	Resources	Metro Bakersfield Area
Wasco	AE	Exclusive Agriculture	RSC	Resources	Wasco
Wasco	CBD	Central Business District Commercial	RES	Retail/Service	Wasco
Wasco	CR	Community Retail Commercial- 10 acres or larger	REH	Retail/Heavy	Wasco
Wasco	ER	Estate Residential- 2-4.5 d.u/gross acre	RL	Residential Low Density	Wasco
Wasco	H		REH	Retail/Heavy	Wasco
Wasco	HC	Highway Commercial	REH	Retail/Heavy	Delano McFarland
Wasco	HC	Highway Commercial	REH	Retail/Heavy	Metro Bakersfield Area
Wasco	HC	Highway Commercial	REH	Retail/Heavy	Wasco
Wasco	HDR	High Density Residential- 15.1-24 d.u/gross acre	RH	Residential High Density	Wasco
Wasco	HI	Heavy Industrial	BP	Basic/Production	Delano McFarland
Wasco	HI	Heavy Industrial	BP	Basic/Production	Metro Bakersfield Area
Wasco	HI	Heavy Industrial	BP	Basic/Production	Wasco
Wasco	LDR	Low Density Residential- 3.5-7.5 d.u/gross acre	RL	Residential Low Density	Wasco
Wasco	LI	Light Industrial	BP	Basic/Production	Wasco
Wasco	MDR	Medium Density Residential- 7.6-15 d.u/gross acre	RM	Residential Medium Density	Wasco
Wasco	NC	Neighborhood Commercial- 5-10 acre	REH	Retail/Heavy	Wasco
Wasco	OS	Parks and Open Space	RSC	Resources	Wasco
Wasco	PF	Public Buildings and Grounds	PU	Public Use	Wasco
Wasco	PO	Professional Office	SO	Service/Office	Wasco
Wasco	RR	Rural Residential- 0-2d.u/gross acre	RVL	Residential Very Low Density	Delano McFarland
Wasco	RR	Rural Residential- 0-2d.u/gross acre	RVL	Residential Very Low Density	Wasco
Wasco	S	Schools	PU	Public Use	Wasco
Wasco	SC	Service Commercial	REH	Retail/Heavy	Metro Bakersfield Area
Wasco	SC	Service Commercial	REH	Retail/Heavy	Wasco