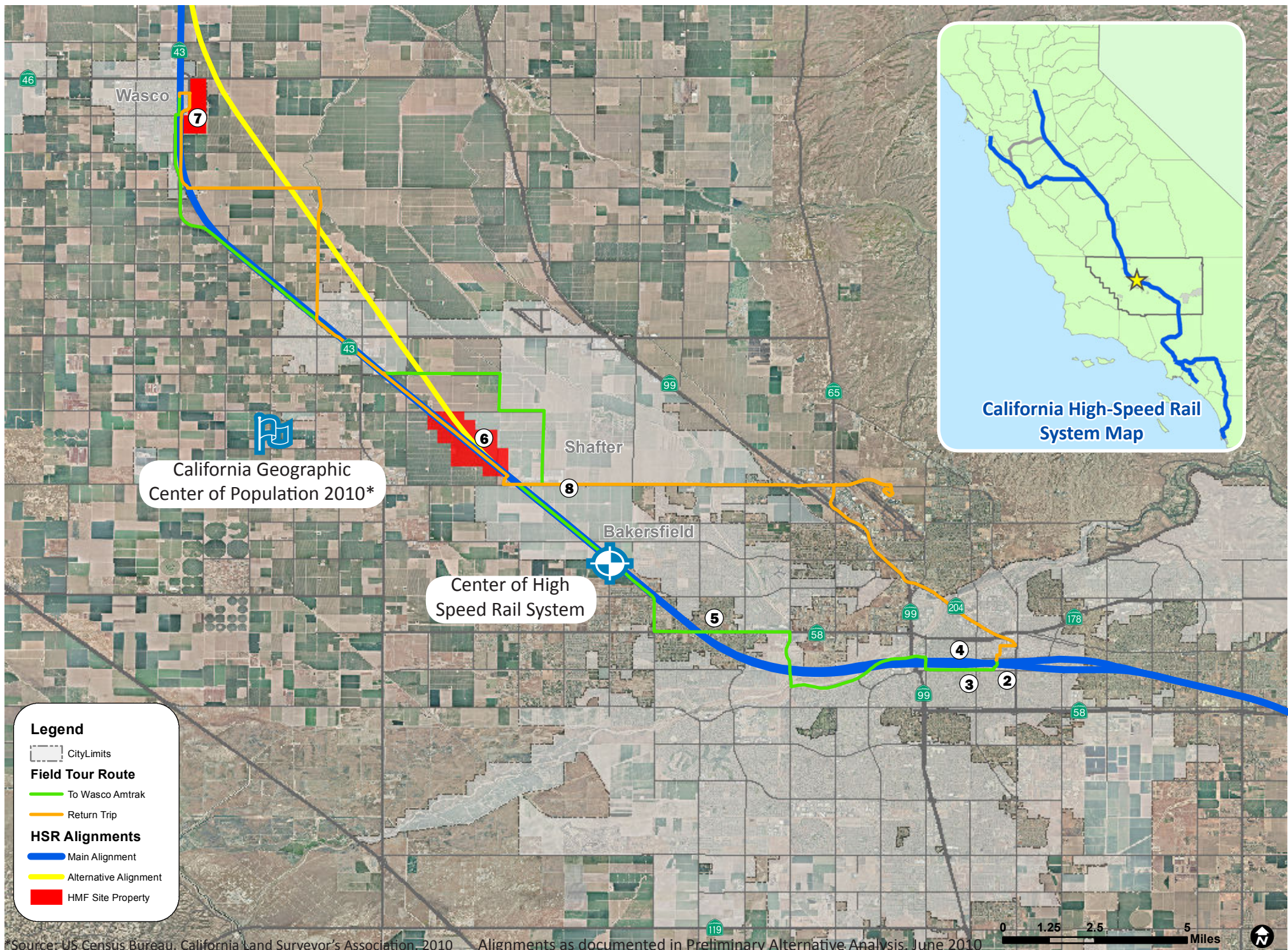




Kern County HSR Alignments and Proposed HMF Sites Field Guide

July 13, 2011





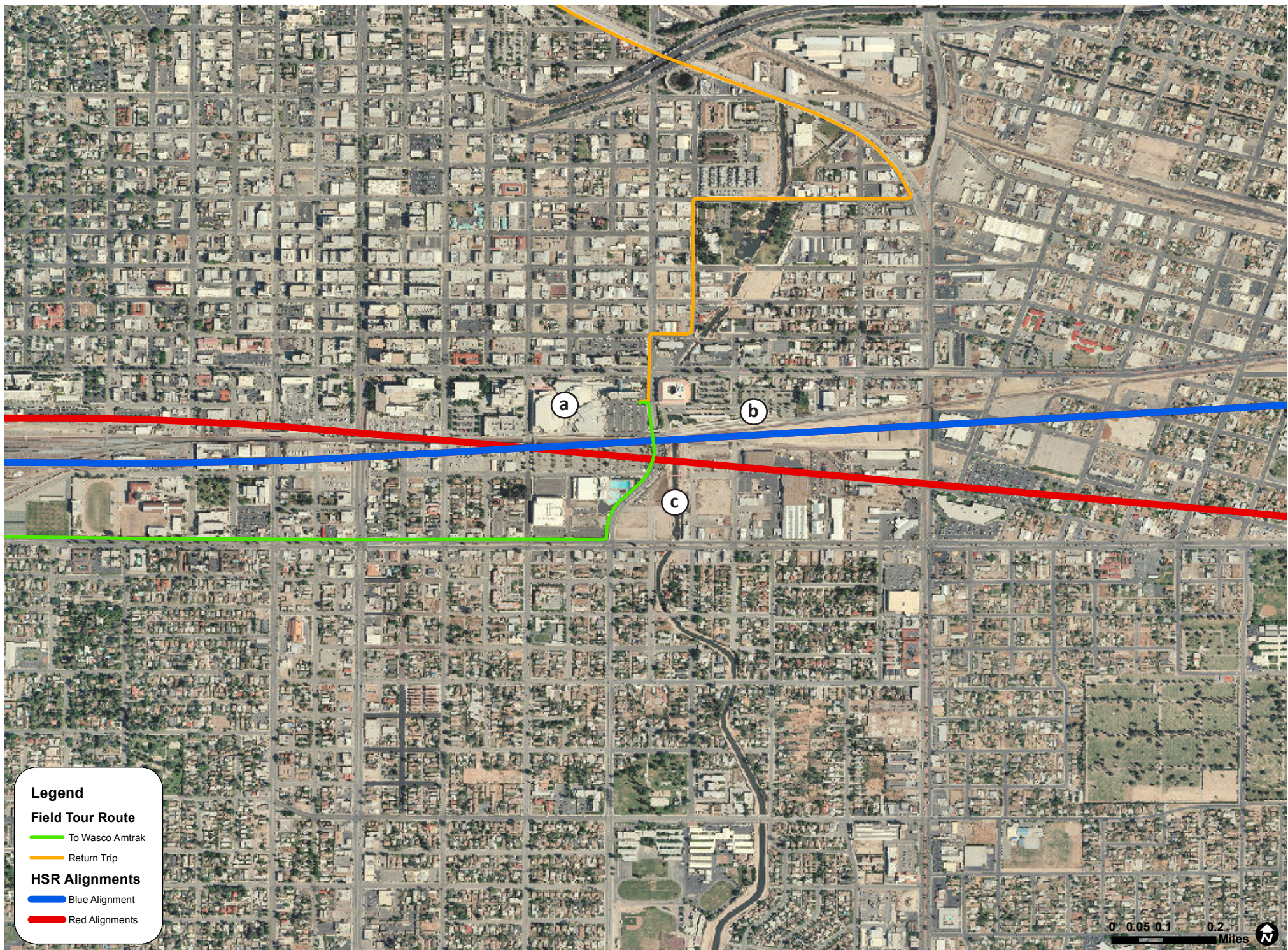
*Source: US Census Bureau, California Land Surveyor's Association, 2010 Alignments as documented in Preliminary Alternative Analysis, June 2010

1. Overall Tour Map

Notes:

- ① Overall Tour Map
- ② Downtown Area
- ③ Bakersfield High School
- ④ Mercy Hospital
- ⑤ Road Projects Alignment
- ⑥ Shafter HMF
- ⑦ Wasco HMF
- ⑧ Supporting Infrastructure

Resources



2. Downtown Area

Notes:

(a)



Rabobank Arena Theater and Convention Center

–The multi-use center is within walking distance from the amtrak station, hotel, aquatic center, and other public facilities. The arena seats 10,000 and the convention center includes an exhibit hall, concert hall, and 13 meeting rooms.

(b)

Bakersfield Amtrak Station

– designed to service initial high-speed train passengers and can accommodate potential future feeder commuter train passengers.

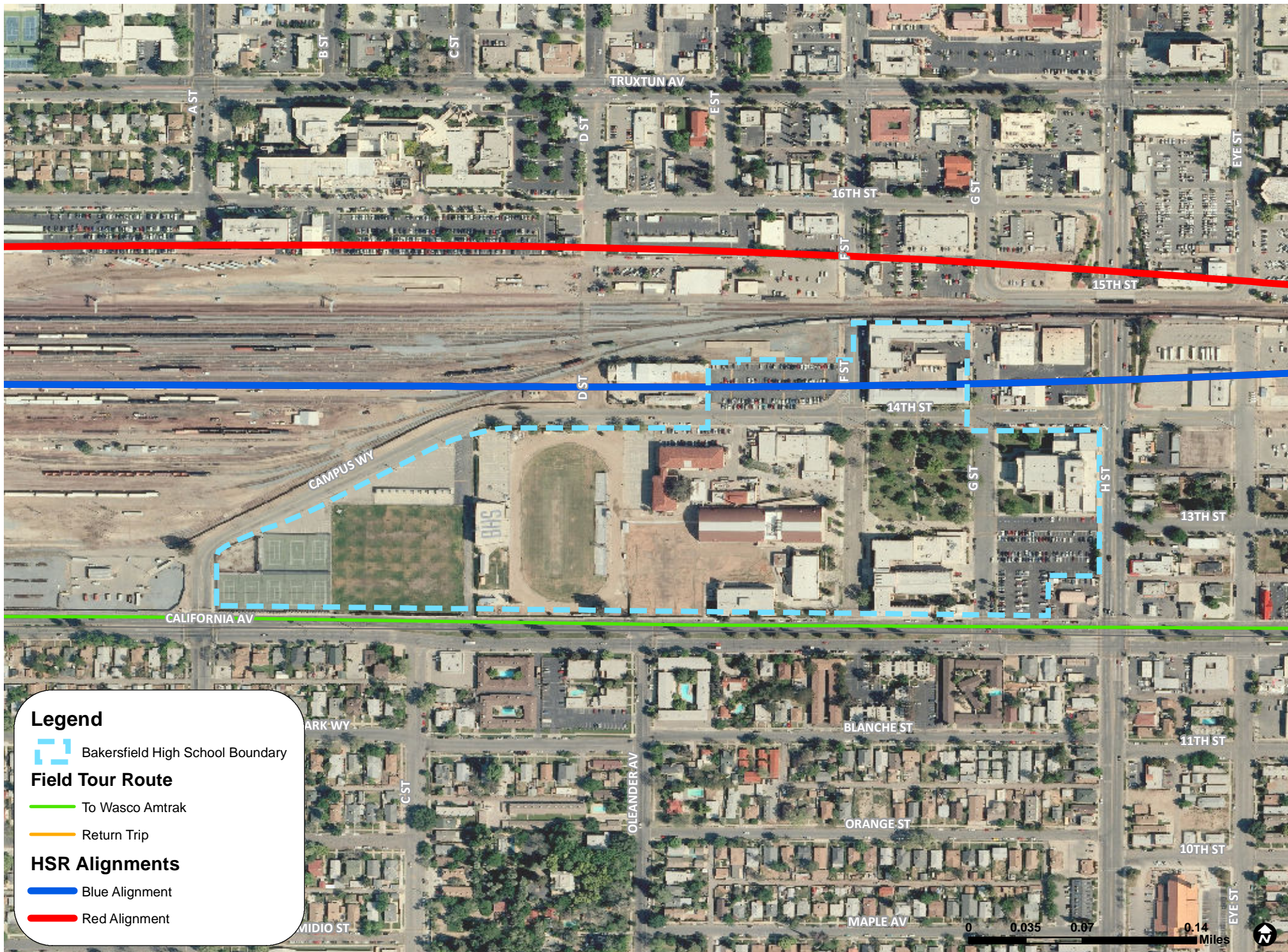


(c)



Mill Creek Redevelopment Project

– provides a destination for tourists to relax between train travels and experience Bakersfield culture at the same time. The park will be accessible to high-speed train passengers via bicycle or a pedestrian walkway.



3. Bakersfield High School

Notes:



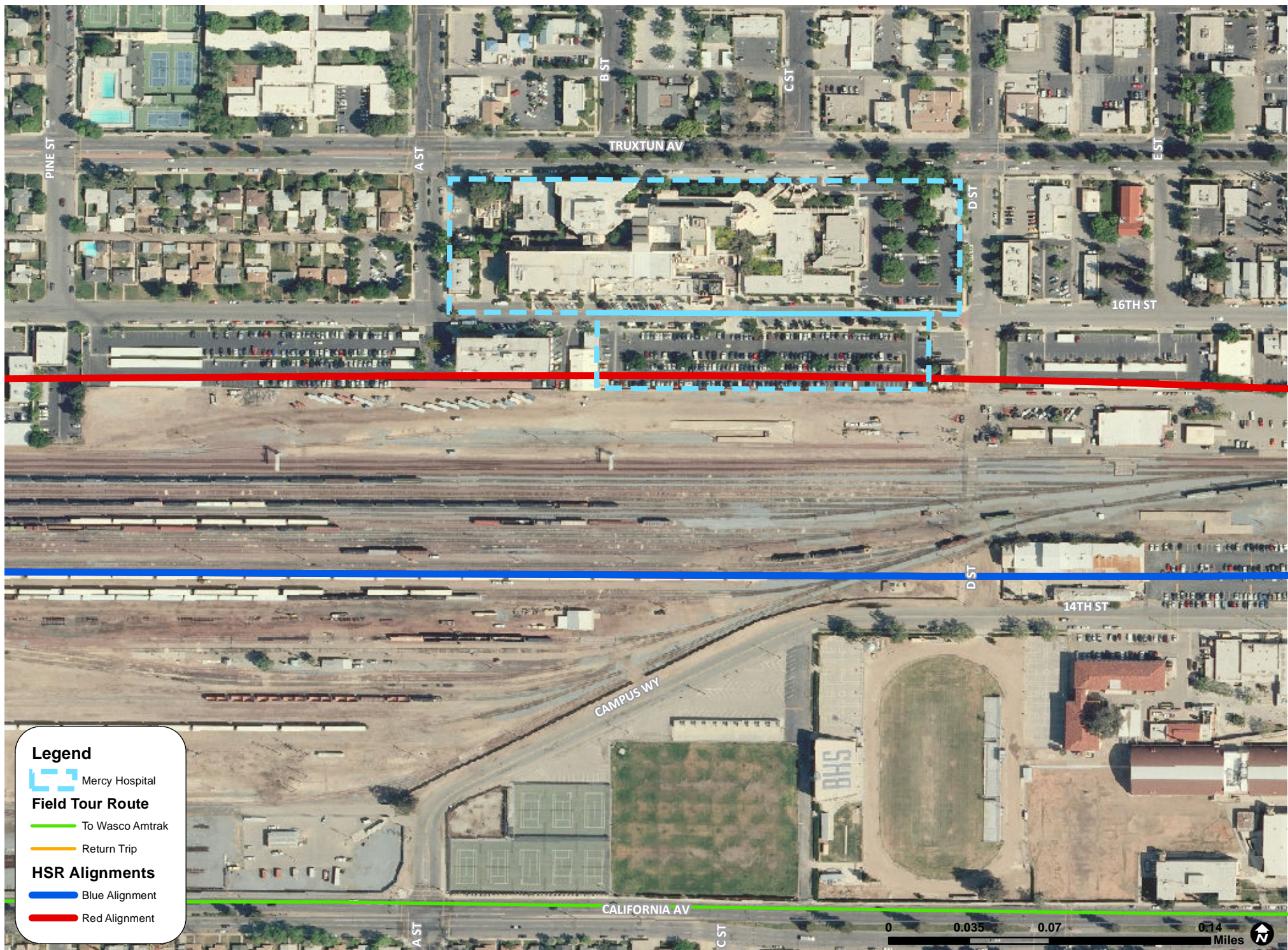
The image above shows the blue alignment impact on BHS campus (CHSRA Bakersfield Public Information Meeting, August 2010).

Bakersfield High School

– requires mitigation for noise, vibration and other safety related issues involving high-speed train traffic.

The campus does not presently meet the State's campus size requirement for a high school campus. Reducing its size would further impact its vitality.

The High School was established in 1893 and was the first high school in Kern County.



4. Mercy Hospital

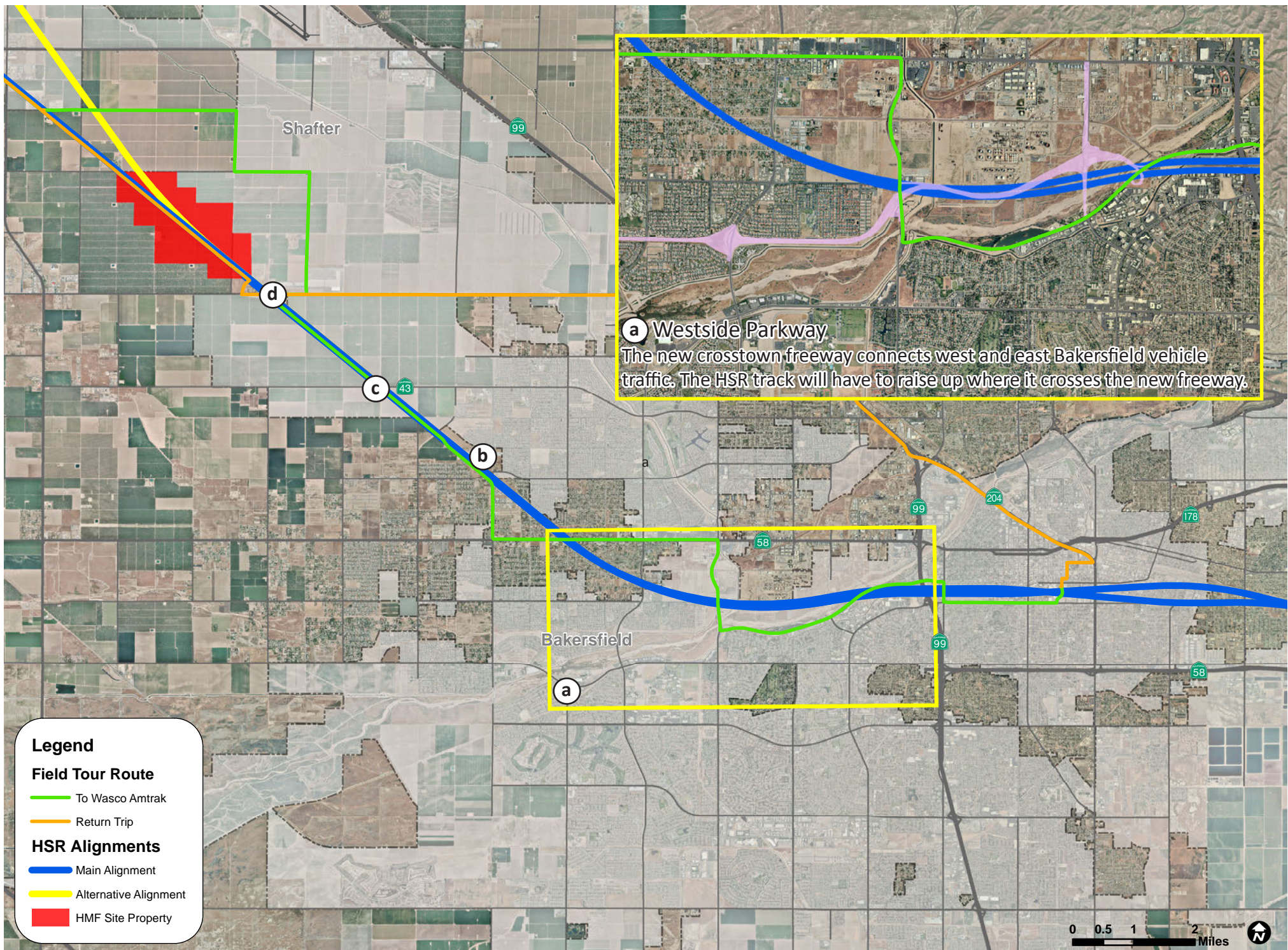
Notes:



Mercy Hospital

– requires mitigation for noise, vibration and other safety issues involving high-speed train traffic.

The Mercy Hospital-Truxtun Campus opened in 1910 and is a member of the Catholic Healthcare West.



5. Road Projects Alignment

Notes:

(a) **Westside Parkway (See inset on map)**

(b) **Hageman Road and BNSF Grade Separation**
– will create two under crossings for vehicle traffic, allowing both the BNSF and HSR tracks to cross above Hageman Rd. and Allen Rd. without changing grade.



Kratzmeyer Road and Renfro Road Grade Separations
– will allow vehicle traffic to crossover the existing BNSF railroad and the HSR tracks.

(d) **7th Standard Road overpass**
– the high-speed track will require mitigation to go over or go under the 7th Standard Road overpass.





6. Shafter Heavy Maintenance Facility

Notes:

(a)



Industrial Land

– Available industrial land for development of support HSR service industries.

(b)

ITTC (International Transportation and Trade Center)

– International Transportation and Trade Center is located four hours from 35 million consumers.



(c)



HMF Site (West Side)

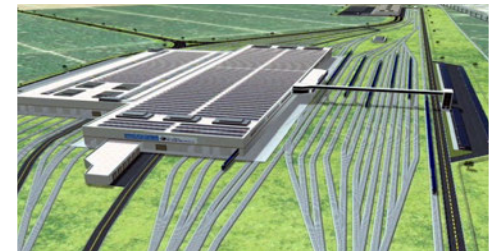
– The proposed site is located in the City of Shafter just north of Bakersfield's City Limits in a designated industrial zone.

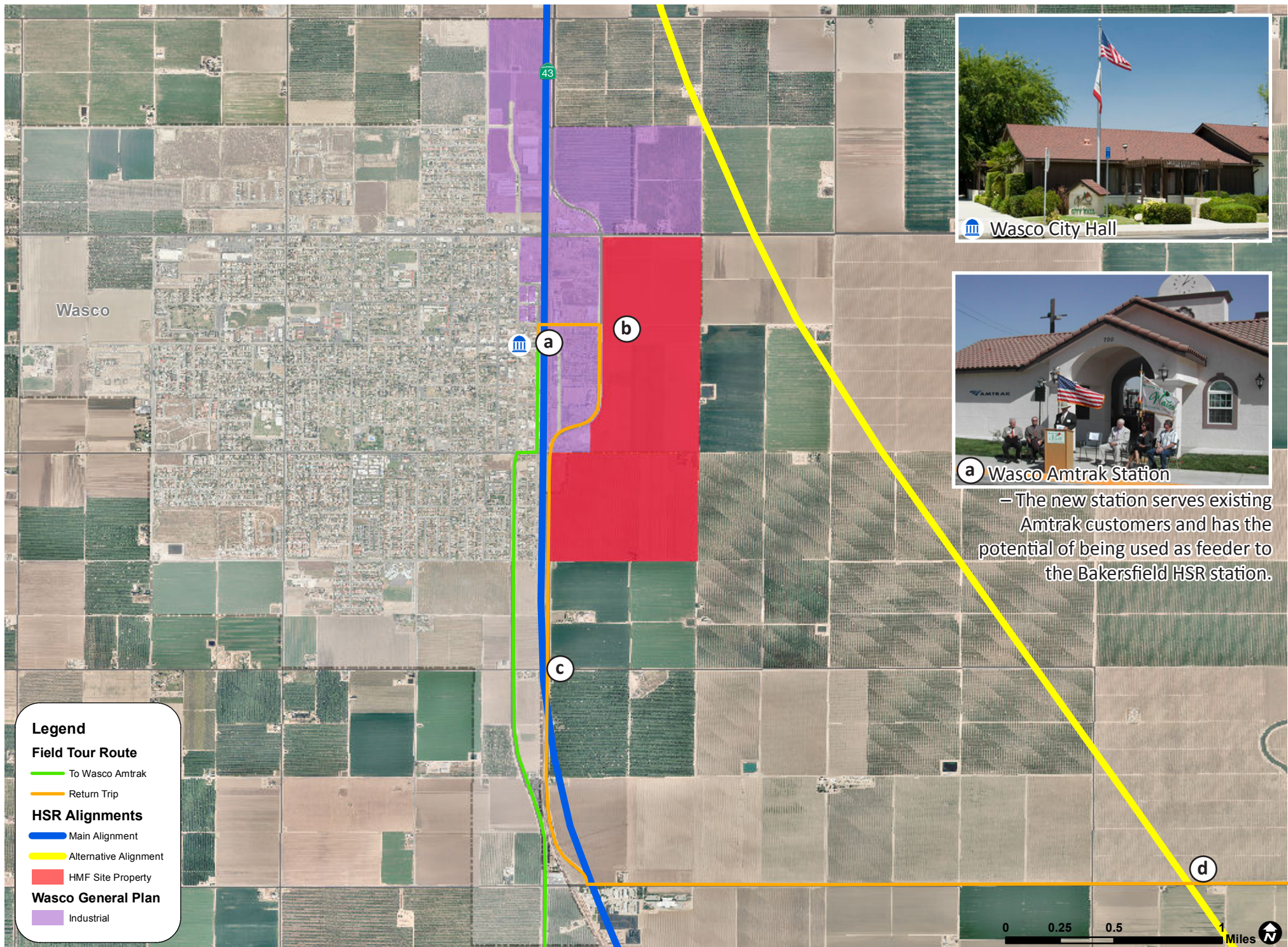
The site consists of up to 640 acres and, has more than 2 miles of direct frontage to the BNSF/CHSRA alignment, and meets all 7 of the CHSRA's HMF site criteria.

(d)

Proposed HMF

– This is a visualization of the HMF site in Shafter. This visualization is the the south view of the HMF.





7. Wasco Heavy Maintenance Facility

Notes:

(b)



Wasco HMF Site (West)
– The proposed site for is just north of Bakersfield in Wasco, California.

The site consists of 421 acres and provides 1.5 miles of frontage near the rail corridor and could be readily developed to ensure CHSRA meets its opening target of 2017. The site meets all 7 of the CHSRA's HMF site criteria.

(c)

Wasco Ave. along BNSF Alignment-North of Kimberlina Rd.

– Wasco Avenue and the BNSF tracks represent the existing transportation corridor south out of the City of Wasco.



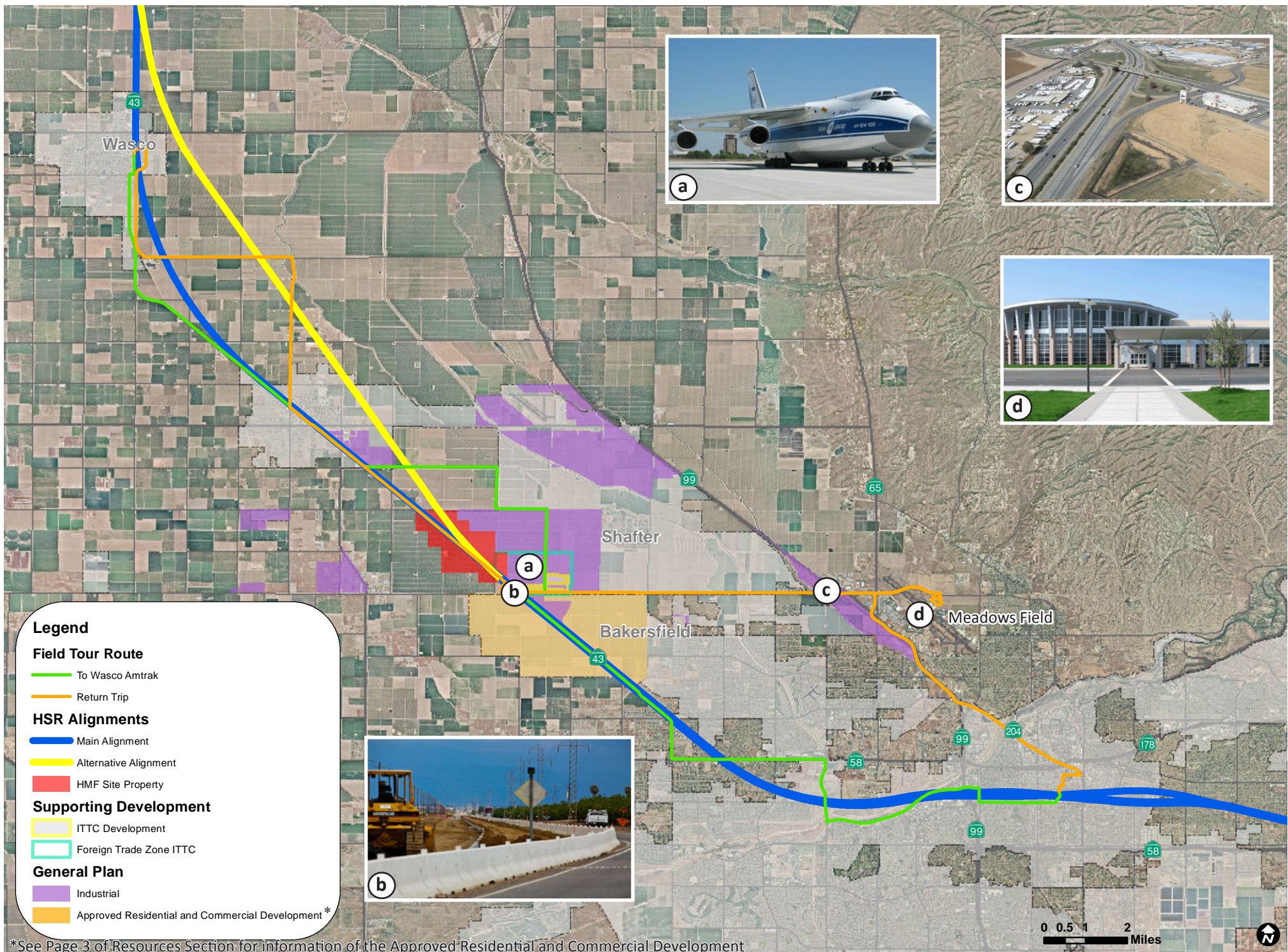
Construction of the rail along this transportation corridor will mesh with the already existing land use constraint and reduce the impact to the rural landscape.

(d)



Bypass Alignment North of Kimberlina Rd. at Poplar Ave.

– The Bypass alignment diagonally traverses farming operations, creating significant impact on prime farmland. Many in our nation are dependent on this prime farmland for the security of their domestic food supply.



0 0.5 1 2 Miles



8. Supporting Infrastructure

Notes:

- a Foreign Trade Zone**

 - The ITTC site and Meadows Field are designated as Foreign Trade Zones allowing for additional benefits when importing and exporting goods internationally.
- b 7th Standard Widening**

 - The 7th Standard Road and Santa Fe Way overpass improvement is an example of investment the County of Kern has been making along high-speed rail alignments. The new overpass allows thruway vehicle traffic to cross over the BNSF tracks and the proposed high-speed rail tracks. The widening of 7th Standard Road creates an expressway connecting I-5, SR 99 and Meadows Field with the proposed HMF site and other industrial sites.
- c 7th Standard and UPRR-Grade Separation**

 - The upgraded interchange further improves the connection of SR 99, Meadows Field, and the potential HMF site.
- d Meadows Field**

 - The William Thomas Terminal – offers state-of-the-art airline service to Kern County residents and airline customers from southern California. Meadows Field is currently home to the largest runway in the San Joaquin Valley. The County recently adopted a plan for Meadows Field that included a vision for the construction of a third runway to accommodate additional air-cargo operations and free up runways for increasing passenger service.

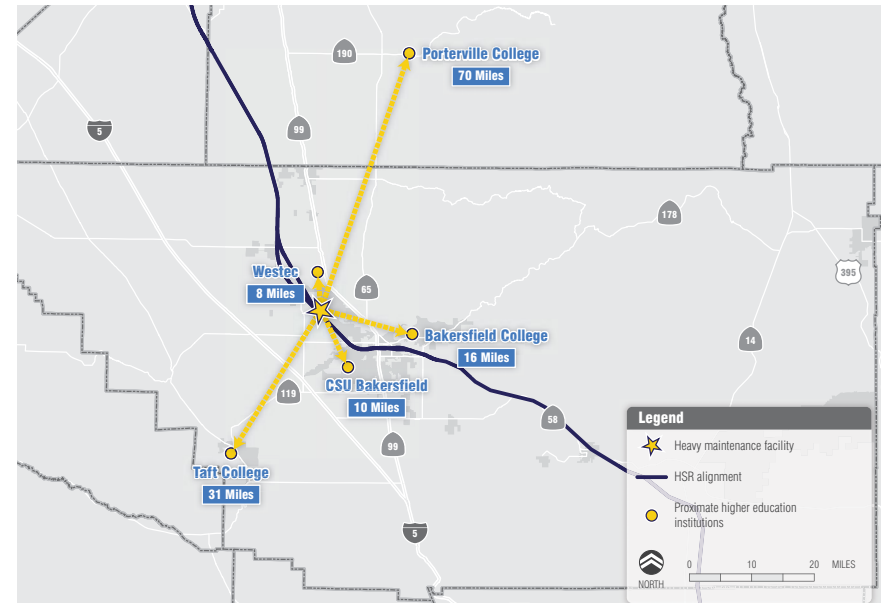
Kern County Information

WORKFORCE

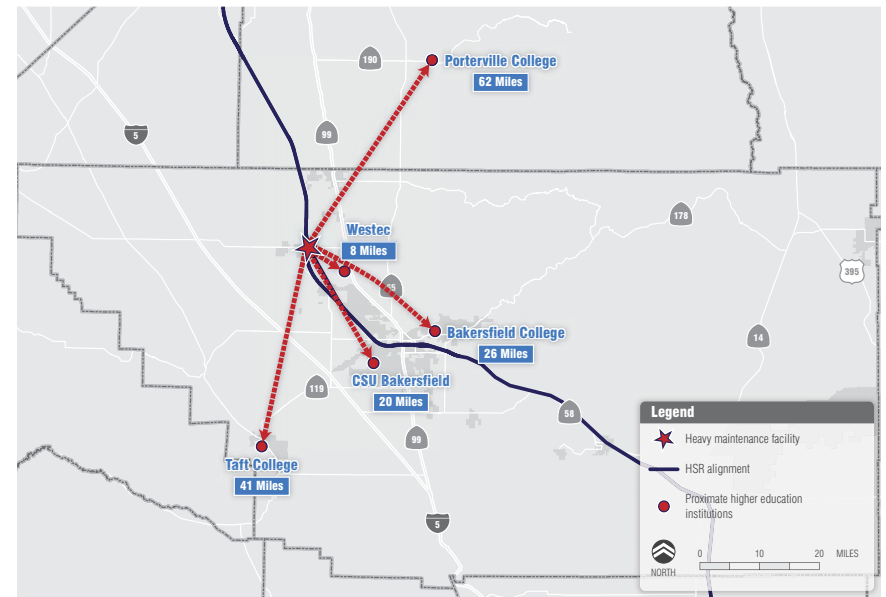
- Kern County provides 12% of the State's Commercial Machinery Repair/Maintenance Workforce (CA EDD).
- Kern County provides 11% of State's Numerical Tool and Process Control Programmers for the Aerospace Industry (CA EDD).
- 90% of the State's population resides within a four-hour drive of the sites.

AVAILABILITY OF TRAINING PROGRAMS FOR INDUSTRIAL OCCUPATIONS

- California State University Bakersfield, Bakersfield College, Taft College, Porterville College, Westside Energy Services Training and Education Center (Westec) all provide educational and job training opportunities.
- The Kern High School District operates Regional Occupation Programs and adult schools within Kern County.



Proximity to Higher Education from proposed Shafter HMF

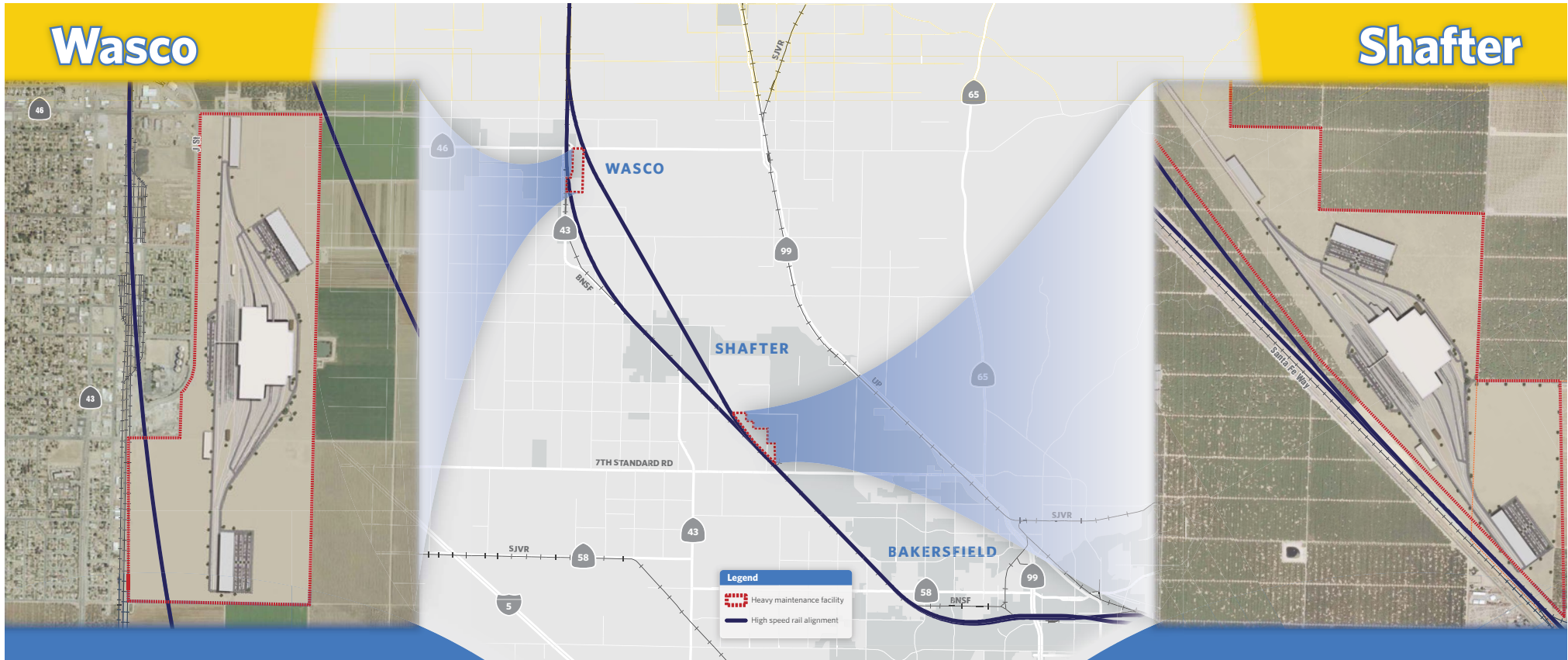


Proximity to Higher Education from proposed Wasco HMF

Kern HMF Sites: Quick Facts

Wasco

Shafter



Wasco

SITE CHARACTERISTICS

Shafter

KERN COUNTY PROVIDES 12% OF THE STATE'S COMMERCIAL MACHINERY REPAIR AND MAINTENANCE WORKFORCE AND IS HOME TO FOUR MAJOR TRAINING PROGRAMS:

- CSU BAKERSFIELD
- BAKERSFIELD COLLEGE
- TAFT COLLEGE
- WESTEC

421 ACRES

5 PARCELS

HEAVY INDUSTRIAL

ADJACENT TO SR 43 & SR 46

NONE

YES

YES

SIZE

OWNERSHIP

ZONING

ACCESS

ENVIRONMENTAL IMPACTS

ECONOMIC INCENTIVES

MAINTENANCE FACILITY
CO-LOCATION

640 ACRES

SINGLE OWNER

INDUSTRIAL

1 MILE FROM 7TH STANDARD RD

NONE

YES

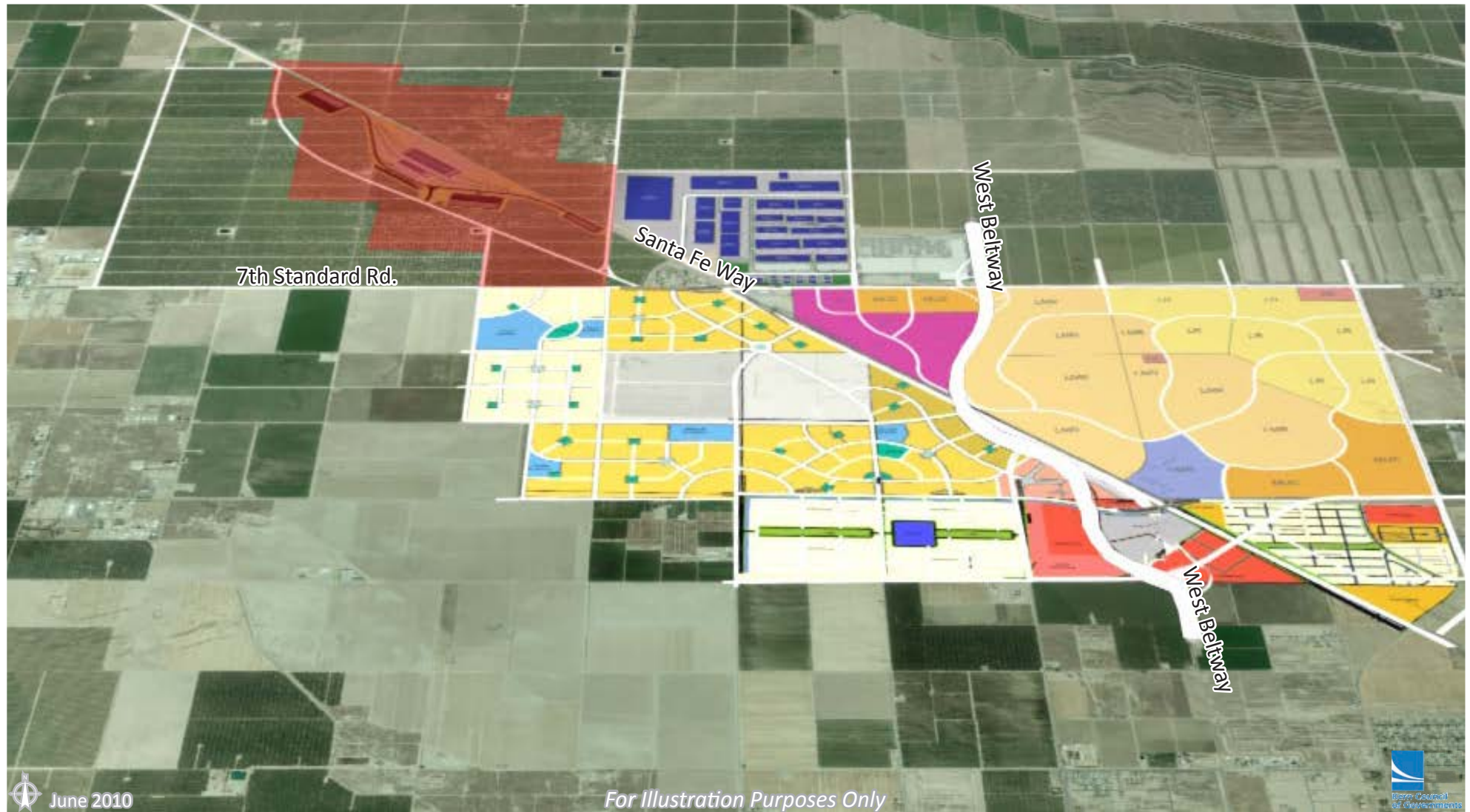
YES

THE SHAFTER SITE IS LOCATED ADJACENT TO THE INTERNATIONAL TRADE AND TRANSPORTATION CENTER AND LESS THAN 10 MILES FROM MEADOWS FIELD AIRPORT

June 2010



Kern HMF Area Development



Approved development adjacent to proposed Shafter Heavy Maintenance Facility that will provide residential, commercial, commercial offices, and industrial uses to support the HMF and Vision California Objectives.

Kern HMF Fact Sheet

June 2011

- Kern County has proposed HMF sites in Shafter and Wasco. Both sites were carried forward in the Alternative Analysis report released by the Authority on September 1, 2010.
- Local landowner Paramount Farms agreed to contribute the land required for the proposed Shafter HMF site on October 11, 2010.
- At the Technical Working Group meeting held on April 28, 2011, Authority staff reported the new alignment west of the BNSF supports the HMF site.
- Authority Chairman Pringle took an aerial tour of the Shafter HMF site before giving keynote speech at the "Kern Welcomes HSR" luncheon on May 16, 2011. During and following the luncheon, local stakeholders and members of Kern Fast Track discussed how to best promote the HMF sites in Kern County. Enhancing the HMF visualization to illustrate the potential for development by HMF-related industries (which could locate adjacent to the HMF site) was discussed, as well as providing supplemental information to the Authority. The conclusion was that Kern should focus its efforts on the "L's:"

Location - Center of the HSR system and Constructability
Labor - Workforce development and Educational institutions
Logistics - Transportation and Distribution Infrastructure
Lifestyle - Sustainability, Environmental Benefits, Walk to Work

These "L's" are supported by Section 2 below from Kern County Board of Supervisors Resolution No. 20 10-005 adopted on January 5, 2010:

1. The Kern County Board of Supervisors strongly supports location of the High-Speed Train Heavy Maintenance Facility at either Shafter or Wasco.
2. The Board hereby pledges the full support cooperation and assistance of the County of Kern to the California High-Speed Rail Authority in all stages of planning, construction, and operation of the Heavy Maintenance Facility, including expedition of zoning, environmental review, permitting job training and mitigation of employee transportation impacts.
3. The Board pledges the County of Kern's financial assistance in partnership with the Cities of Shafter and Wasco in achieving site acquisition and sufficient improvements to the utility and transportation infrastructure that will enable immediate construction and aid in subsequent operation of the Heavy Maintenance Facility.



ENGINEERING TOMORROWS HIGH SPEED RAIL TODAY



Station Planning and Design

Track Design/Layout

Maintenance Facility Planning & Design

Transit Oriented Design

Civil Engineering

Multi-Modal Planning

Traffic Analysis/Engineering

Land Surveying/ 3-D Laser Scanning

Sustainable Development

Drainage/Hydrology

CEQA/NEPA Technical Studies

PUC Planning and Permitting

Landscape Architecture

Public Outreach

Right-of-Way Engineering



Contact Information

Field Tour Participants

Ron Brummett, Executive Director
Kern Council of Governments
brummett@kerncog.org

John Guinn, City Manager
City of Shafter
jguinn@shafter.com

Alan Christensen, City Manager
City of Wasco
alanc@ci.wasco.ca.us

*John Ritchie, Vice President of
Commercial Development*
Paramount Farming
johnr@paramountfarming.com

Holly King
Wasco-Shafter Agricultural Group
holly@triplecrown.bz

Richard Chapman, President
Kern Economic Development Corporation
richardchapman3@gmail.com

*Teresa Hitchcock, Deputy County
Administrative Officer*
County of Kern Administrative Office
hitchcockt@co.kern.ca.us

Barry Nienke, Roads Engineer Manager
County of Kern Roads and Transportation
Services
barryn@co.kern.ca.us

David Couch, Councilmember
City of Bakersfield
david.couch@mssb.com

Donna Carpenter, Bakersfield Representative
Valley Area Strategic Team
dcarpenter@precisioneng.net

Patty Poire, Development Representative
PPoire@westernproperties.us

John Schuler, Project Manager
Greater Bakersfield Grade Separation District
john@rscivil.com

Karen King, CEO
Golden Empire Transit
kking@getbus.org

Arnold Ramming, Civil Engineer
City of Bakersfield
Aramming@bakersfieldcity.us