

Kern Motorist Aid Authority  
ANNUAL FINANCIAL PLAN  
for  
Fiscal Year 2017-2018

CHAIR

Cheryl Wegman, City of Wasco

VICE-CHAIR

Bob Smith, City of Bakersfield

BOARD OF DIRECTORS

Jose Gurrola Jr.  
Bob Smith  
Jennifer Wood  
Rueben Pascual  
Gary Mock  
Manuel Cantu  
Michael Mower  
Cathy Prout  
Orchel Krier  
Philip A. Smith  
Cheryl Wegman  
David Couch  
Zack Scrivner

City of Arvin  
City of Bakersfield  
City of California City  
City of Delano  
City of Maricopa  
City of McFarland  
City of Ridgecrest  
City of Shafter  
City of Taft  
City of Tehachapi  
City of Wasco  
County of Kern  
County of Kern

SUBMITTED BY:  
Ahron Hakimi  
Executive Director  
May 18, 2017

**LETTER OF TRANSMITTAL**

May 18, 2017

The Honorable Board of Directors  
Kern Motorist Aid Authority

Dear Chairman and Board:

Kern Motorist Aid Authority (KMAA) staff is pleased to submit the Fiscal Year 2017-2018 Annual Financial Plan for your review and approval. The plan is a statement, by object or account classification and line item within each account, of the anticipated KMAA financial activity for the upcoming year. The plan includes estimated revenues totaling \$733,066 and estimated expenses totaling \$1,024,502. This represents a net operations deficit of \$291,436 to be financed by fund reserves for implementation of a traveler information system and countywide litter removal.

### MISSION STATEMENT

The KMAA Board has adopted the following mission statement to guide the operation of the Kern County roadside call box network:

- 1) To provide a dependable motorist aid communication system to areas of the county not heavily patrolled and where traditional communication services do not exist.
- 2) To provide a reliable motorist aid communication system that is well maintained with failures repaired within 24 hours of identification.
- 3) To provide a high level of assurance that a motorist's call for assistance will receive a response.
- 4) To provide a public information program to ensure that the motorist understands what the call boxes are and how the call boxes are to be used.

### REVENUES

The KMAA roadside call box program is financed by the assessment of a \$1.00 fee upon each registered nonexempt motor vehicle within the County of Kern. The California Department of Motor Vehicles applies the fee as part of the vehicle registration program and returns the amount collected, less a processing fee, within the county. Over the past few years, fees collected have been relatively stable. Staff anticipates vehicle fees totaling \$721,087 for the 2017-18 fiscal year; a 1.6 percent increase over the prior year budget.

In addition to fees, KMAA realizes non-operating revenues (interest) by investing cash balances through the Kern County Treasurers' cash investment program. Staff anticipates interest revenue totaling \$11,979 for the 2017-18 fiscal year.

## EXPENSES

KMAA budgetary appropriations are primarily focused on these areas: 511 traveler information, litter removal, hardware maintenance, cellular service, dispatch services, depreciation and capital. Expenses are expected to increase this year due primarily to the system upgrade to the third generation (3G) of mobile telecommunications technology. Staff estimates total appropriations of \$1,024,502 will be required to finance FY 2017-18 operations.

## PROGRAM DESCRIPTION

The KMAA roadside call box program was initiated in August 1991. During the past 23 years the network has grown to include nearly 500 call boxes. During the 2016-17 fiscal year, KMAA completed a major upgrade to call box hardware, including conversion to third generation (3G) voice and fourth generation (4G) data digital cellular service.

KMAA program services are delivered through an extensive public-private partnership. Partnership members and related responsibilities include the following:

<u>Agency</u>	<u>Responsibility</u>
Kern Council of Governments	Program management and contract administration
California Dept. of Transportation	Installation guidelines and encroachment permitting
California Dept. of Highway Patrol	Operations guidelines and service dispatching
CASE Systems Inc.	Hardware manufacture, installation and maintenance
Verizon Wireless, AT&T	Cellular service

## CONCLUSION

The KMAA roadside call box program completed twenty six (26) years of service to the motoring public during the 2016-17 fiscal year. In addition to the call box network, KMAA anticipates the implementation of a traveler information program to further aid the residents of Kern County. The Board can take pride in the improvements to motorist safety and transportation system efficiency provided by the KMAA call box program.

Sincerely,

Ahron Hakimi  
Executive Director

Kern Motorist Aid Authority

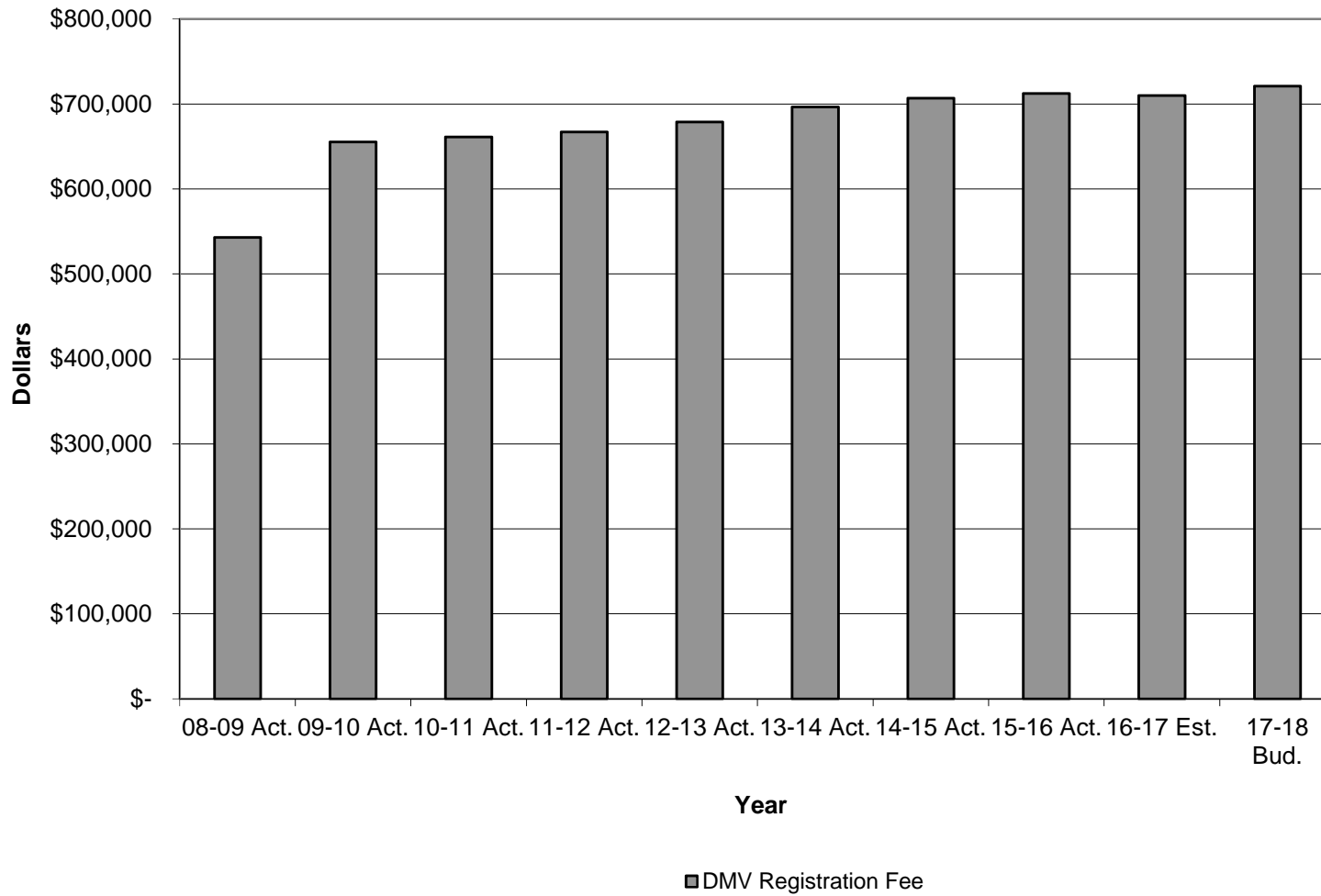
SCHEDULE OF CALL BOX INSTALLATIONS

<u>Route</u>	<u>Call Boxes</u>	<u>Route Mileage</u>
I-5	95	87
SR-14	45	65
SR-33	33	74
SR-43	18	74
SR-46	12	58
SR-58	95	144
SR-65	11	25
SR-99	27	58
SR-119	11	31
SR-155	23	71
SR-166	12	25
SR-178	33	57
SR-223	15	30
SR-395	21	36
Tehachapi/Willow Springs	11	24
-----		
Installed	462	859
Scheduled	0	
Unprogrammed	0	
-----		
Total Serviceable	462	
Proposed	0	
-----		
TOTAL	462	
=====		

Note: Call box spacing: Urban/one mile, rural/two miles, excepting major grades.

## **REVENUES**

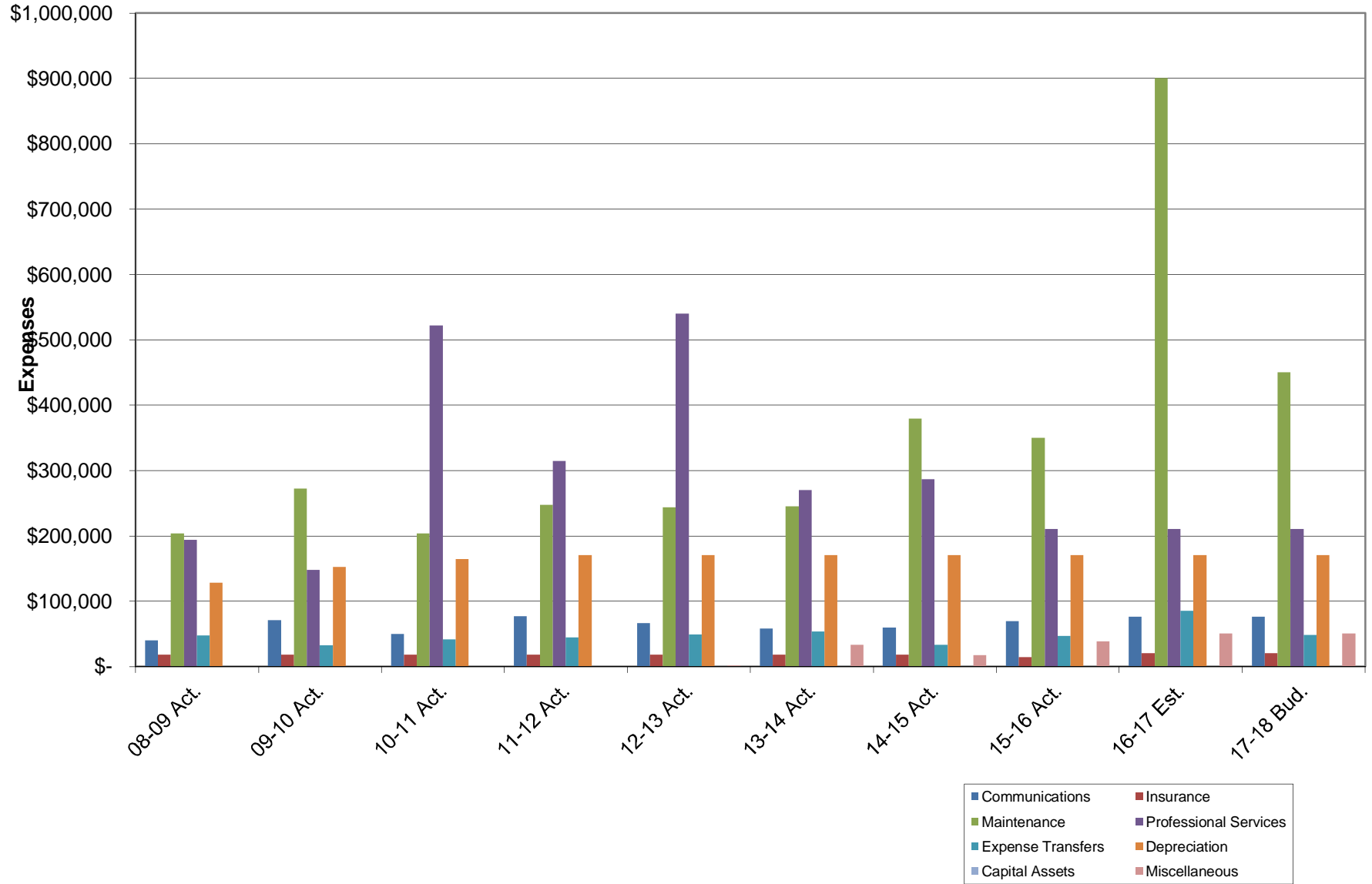
# Kern Motorist Aid Authority DMV Revenue History



**EXPENSES**



## Kern Motorist Aid Authority-Annual Expenses



**Kern Motorist Aid Authority  
COMPARATIVE FINANCIAL PLAN**

(Revised: March 6, 2017)

Description	FY 2013-14	FY 2014-15	FY 2015-16	FY 2016-17	FY 2017-18
	Actual	Actual	Actual	Estimated	Proposed
BEGINNING FUND EQUITY	\$ 2,444,814	\$ 2,298,616	\$ 2,047,568	\$ 1,872,861	\$ 1,085,581
Contributed Capital (Assets)	\$ 728,415	\$ 558,329	\$ 388,244	\$ 218,158	\$ 48,072
APPROPRIATION FOR CONTINGENCIES:					
Reserved for Asset Replacement	\$ -	\$ -	\$ -	\$ -	\$ -
Reserved for ADA Compliance	\$ -	\$ -	\$ -	\$ -	\$ -
Reserved for General Purposes	\$ -	\$ -	\$ -	\$ -	\$ -
FUND EQUITY AVAILABLE	\$ 3,173,229	\$ 2,856,945	\$ 2,435,812	\$ 2,091,019	\$ 1,133,653
REVENUES:					
Vehicle Registration Fees	\$ 696,400	\$ 706,986	\$ 712,316	\$ 709,984	\$ 721,087
Interest	\$ 4,500	\$ 5,217	\$ 10,447	\$ 13,658	\$ 11,979
Other	\$ -	\$ -	\$ -	\$ -	\$ -
TOTAL REVENUES	\$ 700,900	\$ 712,203	\$ 722,763	\$ 723,642	\$ 733,066
APPROPRIATIONS FOR EXPENSES:					
Communications--					
A.T. & T./Sprint	\$ 4,008	\$ 4,357	\$ 5,281	\$ 11,000	\$ 11,000
Verizon	\$ 54,153	\$ 54,860	\$ 63,648	\$ 65,000	\$ 65,000
Pacific Bell/SBC	\$ -	\$ -	\$ -	\$ -	\$ -
Miscellaneous	\$ -	\$ -	\$ -	\$ -	\$ -
Communications--Subtotal	\$ 58,161	\$ 59,217	\$ 68,929	\$ 76,000	\$ 76,000
Insurance--					
Comprehensive General Liability	\$ 17,767	\$ 17,769	\$ 13,909	\$ 20,000	\$ 20,000
Public Officials Liability	\$ -	\$ -	\$ -	\$ -	\$ -
Insurance--Subtotal	\$ 17,767	\$ 17,769	\$ 13,909	\$ 20,000	\$ 20,000
Maintenance/Equipment--					
CASE/Corrective & Preventative	\$ 244,839	\$ 248,612	\$ 225,942	\$ 320,000	\$ 250,000
GTE/Repairs	\$ -	\$ -	\$ -	\$ -	\$ -
CASE/Digital Upgrade	\$ -	\$ -	\$ -	\$ 380,000	\$ -
511 System Maintenance	\$ -	\$ 130,628	\$ 123,426	\$ 200,000	\$ 200,000
Maintenance/Equipment--Subtotal	\$ 244,839	\$ 379,240	\$ 349,368	\$ 900,000	\$ 450,000
Miscellaneous--					
511 Marketing/Supplies	\$ 33,164	\$ 17,485	\$ 38,604	\$ 50,000	\$ 50,000
Memberships--					
IVHS Association	\$ -	\$ -	\$ -	\$ -	\$ -
Professional Services--					
California Highway Patrol/Bkfld. Dispatch	\$ 10,441	\$ 6,400	\$ 10,817	\$ 10,000	\$ 10,000
California Highway Patrol/Barstow Dispatch	\$ -	\$ -	\$ -	\$ -	\$ -
County of Kern/Canyon Call Boxes	\$ -	\$ -	\$ -	\$ -	\$ -
Caltrans District 06/Administration	\$ -	\$ -	\$ -	\$ -	\$ -
Caltrans District 09/Administration	\$ -	\$ -	\$ -	\$ -	\$ -
California SAFE Committee	\$ -	\$ -	\$ -	\$ -	\$ -
511 Consultant	\$ 101,994	\$ -	\$ -	\$ -	\$ -
Litter Removal	\$ 157,511	\$ 280,140	\$ 199,390	\$ 200,000	\$ 200,000
KMAA Strategic Plan Update	\$ -	\$ -	\$ -	\$ -	\$ -
KMAA Project	\$ -	\$ -	\$ -	\$ -	\$ -
Professional Services--Subtotal	\$ 269,946	\$ 286,540	\$ 210,207	\$ 210,000	\$ 210,000
Expense Transfers--					
Program Operations	\$ 53,176	\$ 32,915	\$ 46,370	\$ 62,227	\$ 48,416
Administration	\$ -	\$ -	\$ -	\$ 22,609	\$ -
Opinion Research Project	\$ -	\$ -	\$ -	\$ -	\$ -
Traffic Count Program	\$ -	\$ -	\$ -	\$ -	\$ -
Expense Transfers--Subtotal	\$ 53,176	\$ 32,915	\$ 46,370	\$ 84,836	\$ 48,416
Depreciation--					
Equipment	\$ 170,086	\$ 170,086	\$ 170,086	\$ 170,086	\$ 170,086
Capital Assets--					
GTE/Call Boxes	\$ -	\$ -	\$ -	\$ -	\$ -
TOTAL APPROPRIATIONS	\$ 847,139	\$ 963,252	\$ 897,473	\$ 1,510,922	\$ 1,024,502
OPERATING SURPLUS (DEFICIT)	\$ (146,239)	\$ (251,048)	\$ (174,707)	\$ (787,280)	\$ (291,436)
Adjustments to Fund Balance for Fixed Assets	\$ (728,415)	\$ (558,329)	\$ (388,244)	\$ (218,158)	\$ (48,072)
ENDING UNRESERVED FUND EQUITY	\$ 2,298,575	\$ 2,047,568	\$ 1,872,861	\$ 1,085,581	\$ 794,144