



January 23, 2023

TO: **REGIONAL PLANNING ADVISORY COMMITTEE**
FROM: AHRON HAKIMI, EXECUTIVE DIRECTOR
SUBJECT: FEBRUARY 1, 2023, MEETING CANCELLATION NOTICE

The meeting of the Regional Planning Advisory Committee (RPAC) scheduled for Wednesday, February 1, has been cancelled.

The Cancellation Notice and Information Items can be found on the Kern COG website:

<https://www.kerncog.org/rpac-meetings/>



**Kern Council
of Governments**

February 1, 2023

TO: REGIONAL PLANNING ADVISORY COMMITTEE

FROM: Ahron Hakimi,
Executive Director

By: Rochelle Invina-Jayasiri, Regional Planner

SUBJECT: **INFORMATION ITEM:**
REGIONAL HOUSING NEEDS MAPPING TOOL UPDATE AND CORRECTED FINAL
RHNA TABLE

DESCRIPTION:

The consultant team updated the online Regional Housing Needs Mapping Tool. Please contact staff for training on the online mapping tool.

DISCUSSION:

Online Regional Housing Needs Mapping Tool

During the September RPAC meeting, staff from Rincon Consultants presented a draft of the online Housing Needs Mapping Tool. Staff and the RHNA consultant team is developing and maintaining a publicly viewable on-line mapping application, which will allow users to view the proposed RHNA unit allocations for each jurisdiction and to explore specific parcels to evaluate the potential number of units a parcel could support. The mapping tool will assist jurisdictions in the development and adoption of policies and process improvements to accelerate housing production. Staff from Rincon Consultants updated the online mapping tool. A presentation of the mapping tool will be scheduled at a future RPAC meeting.

The online mapping tool can be accessed here: [Kern COG Housing Needs Mapping Tool](#)
Attachment 1 is the Housing Needs Mapping Tool User Guide. The link to the online mapping tool and user guide can also be found via the [Kern COG RHNA webpage](#).

Staff and the consultant team are seeking feedback on the online mapping tool. In addition, if your agency is interested in training on the online mapping tool, please contact rinvina@kerncog.org.

Corrected RHNA Table

On December 22, 2022, Department of Housing and Community Development (HCD) emailed Kern COG about discrepancies they found in the Final RHNA. Staff and our consultant team have resolved the discrepancies which were rounding errors and have informed HCD. Staff also notified the affected local governments (County of Kern, California City, Shafter, Taft, and Wasco) of the discrepancies and provided them with the corrected RHNA. Please see Attachment 2 for the corrected Final RHNA table.

Regional Housing Data Report

As part of the San Joaquin Valley Regional Early Action Program (REAP) comprehensive housing report, the REAP consultant team is contracted to produce housing data sets for all San Joaquin Valley jurisdictions. Local jurisdictions will be able to use the data to prepare the housing needs assessment required for the pending housing element updates. The data sets are linked to the online mapping tool. The data sets are available and are pre-certified by HCD: https://www.dropbox.com/sh/842j1kzmg5ptrpl/AAAXyHuFP-s5BfAwI_cr2aaa?dl=0

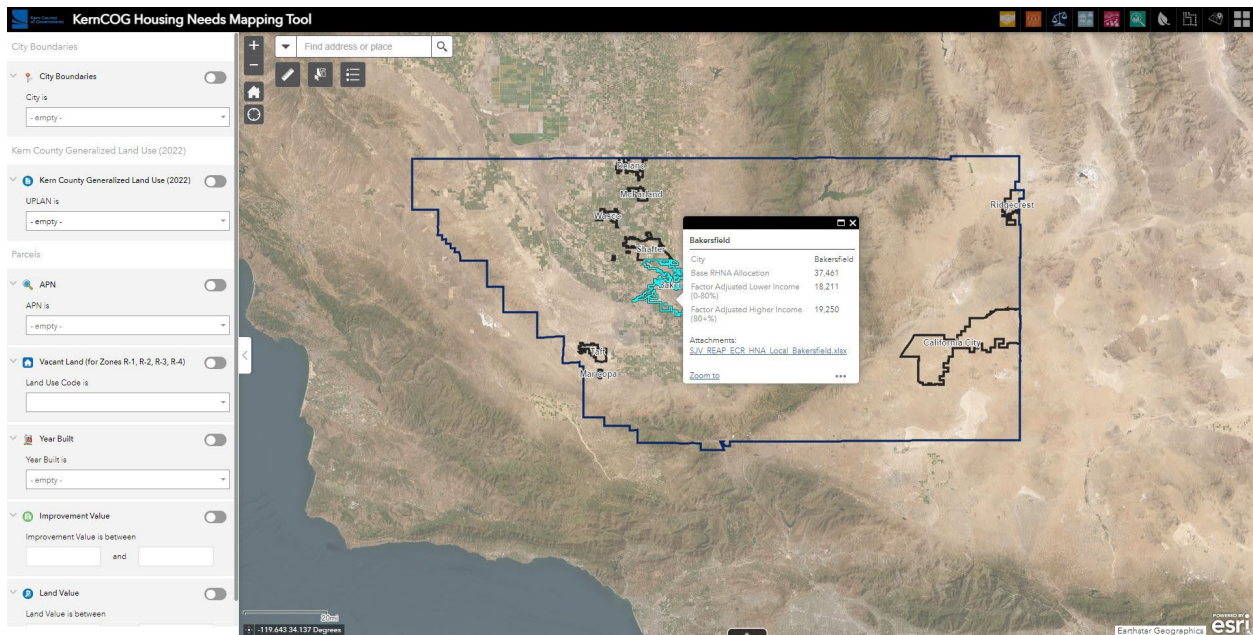
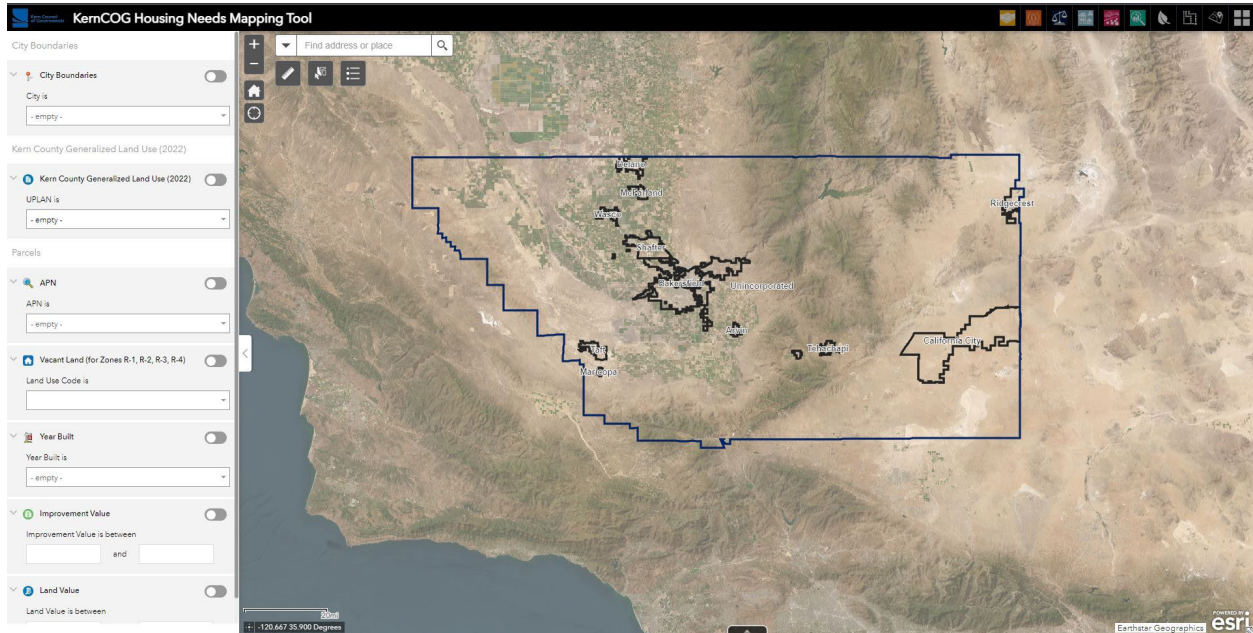
In addition, HCD provided housing element data packages to COG's and regions around the state to aid with the 6th cycle housing element updates. The data packages contain most of the data required in the housing needs assessment portion of the housing element update. These requirements are described in detail on HCD's website under the "Housing Needs" expandable window here: [Building Blocks | California Department of Housing and Community Development](#). Certain data elements, such as farmworker and homeless populations are described at the county level, but should be supplemented with other sources so they may be quantified at the local level. The data package for the Kern COG region can be downloaded here: https://www.dropbox.com/s/fvccgc043qw3ntv/Data%20Package_Kern.xlsx?dl=0

Attachment 1: Housing Needs Mapping Tool User Guide

Attachment 2: Corrected Final RHNA Table

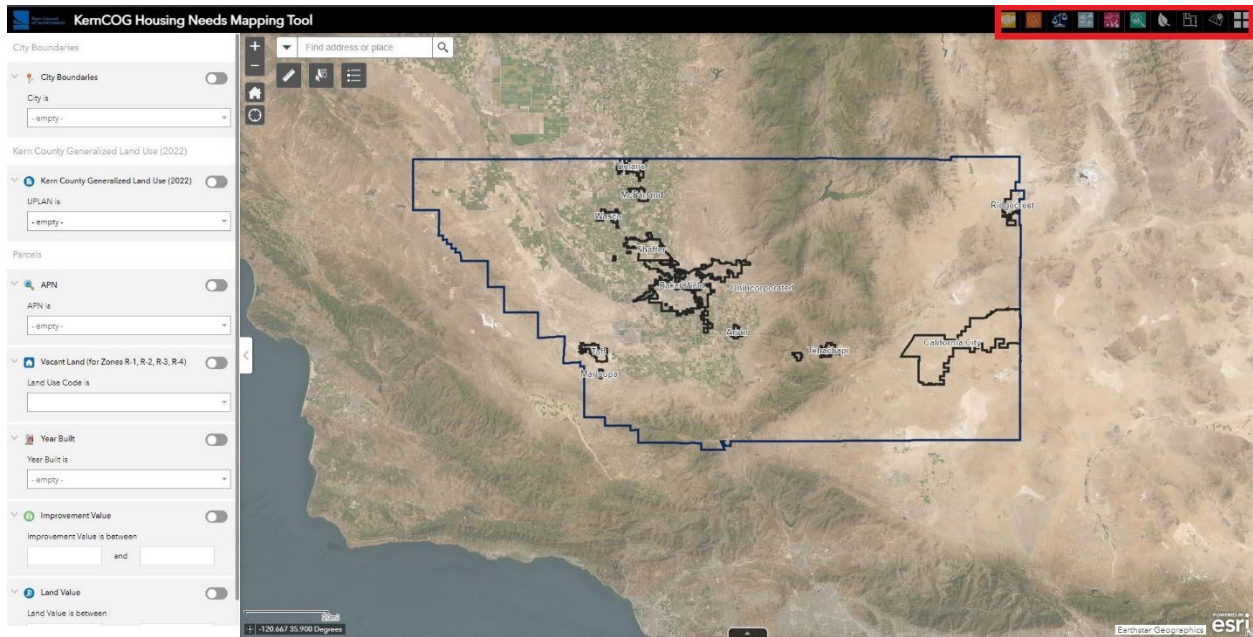
Kern COG Housing Needs Mapping Tool User Guide

The tool opens to the screen below. The default layers shown are the County Boundary and City Boundaries. Click on a City Boundary to view Regional Housing Needs Allocation (RHNA) data as well as download the jurisdiction specific San Joaquin Valley Regional Early Action Planning (SJV REAP) spreadsheet.



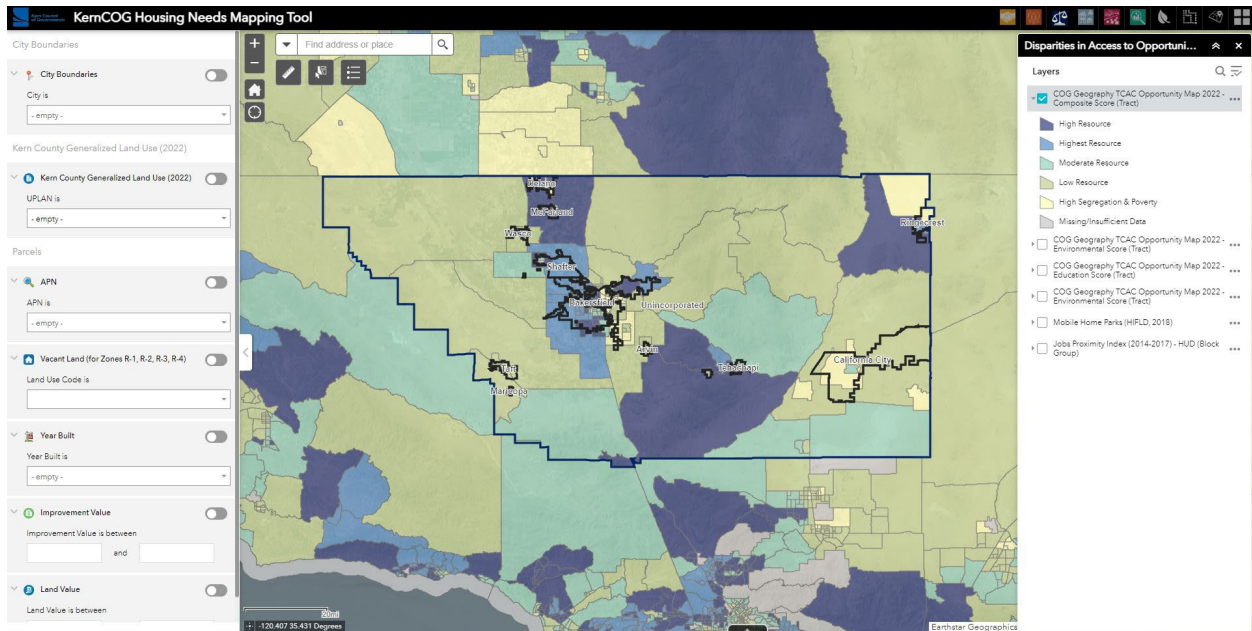
Data Categories

In the upper right-hand corner of the tool are nine clickable category icons. Click on each icon to explore data layers available in that category.



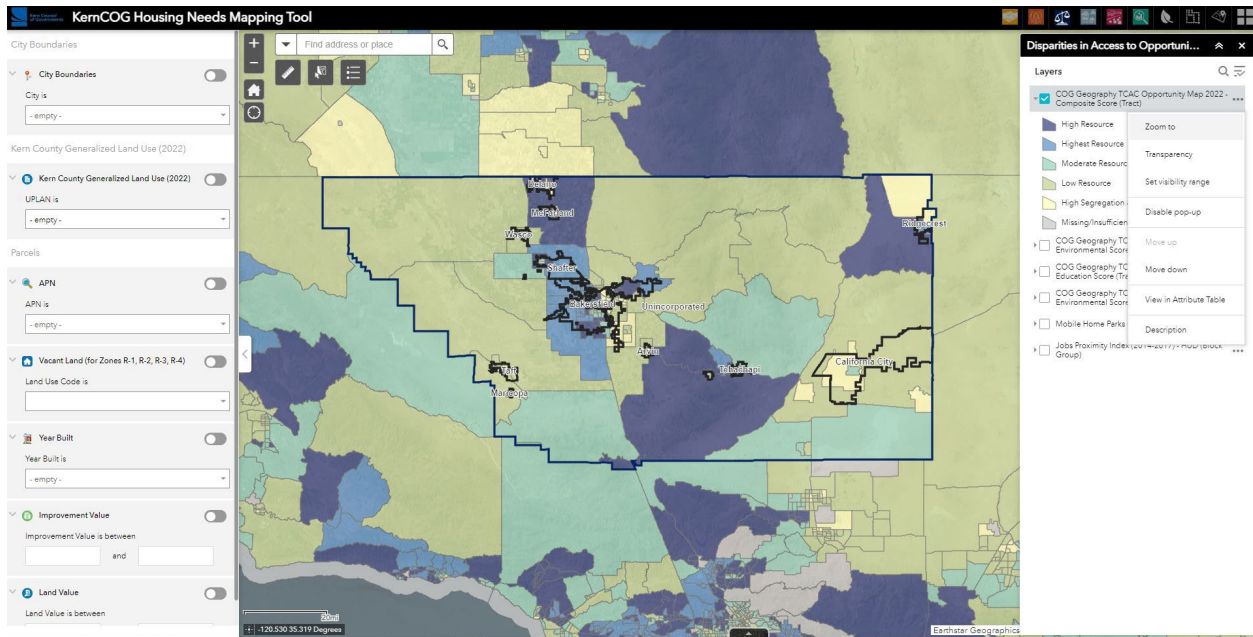
Viewing Data Layers

To make a data layer viewable, click on the empty box to the immediate left of the data layer name. The data appears visually on the tool. Click the drop down arrow next to the layer name to show the corresponding layer symbology. To remove the data layer from view, click the checked box to the immediate left of the layer name. The layer will no longer be visible. Once a layer is selected for viewing, it will remain visible until the selection box is unselected, even when moving between data categories. The selection box must be unselected to remove a data layer from view.



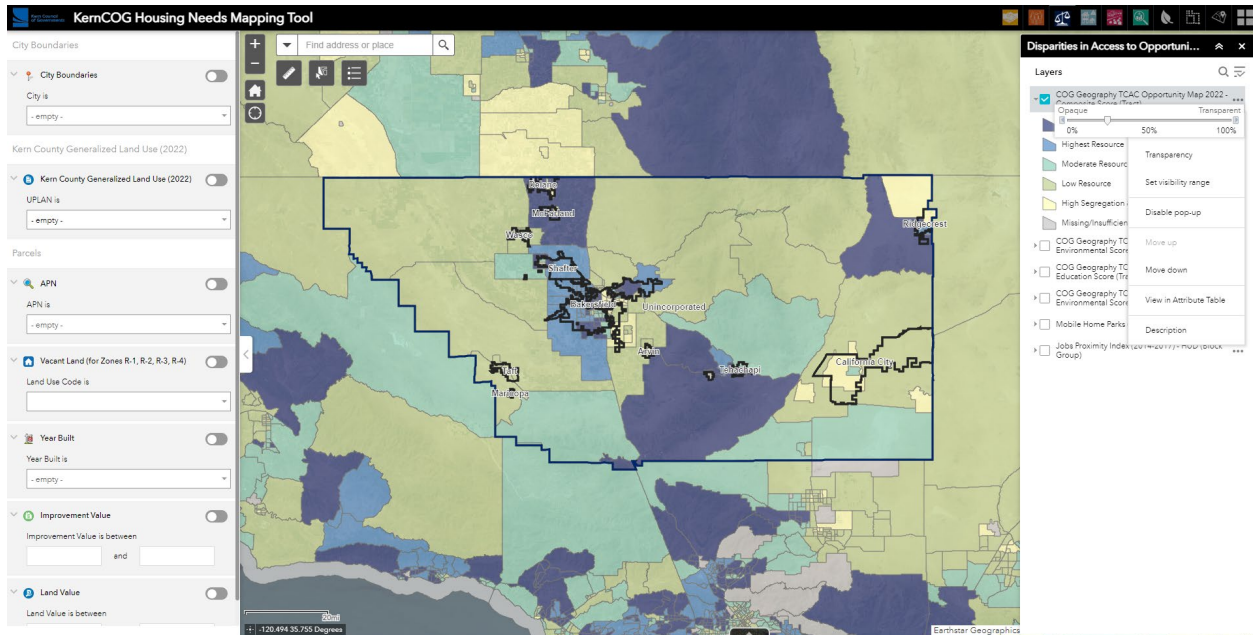
Layer Order

Multiple layers may be viewed at once, however the data layer at the top of the category in the right-hand side panel will be the predominantly visible layer. The order of available data layers within each category is adjustable. To change the order of a layer, click on the three dots to the right of the layer name in the right-hand side panel. Select “Move Up” or “Move Down” to move the selected layer.



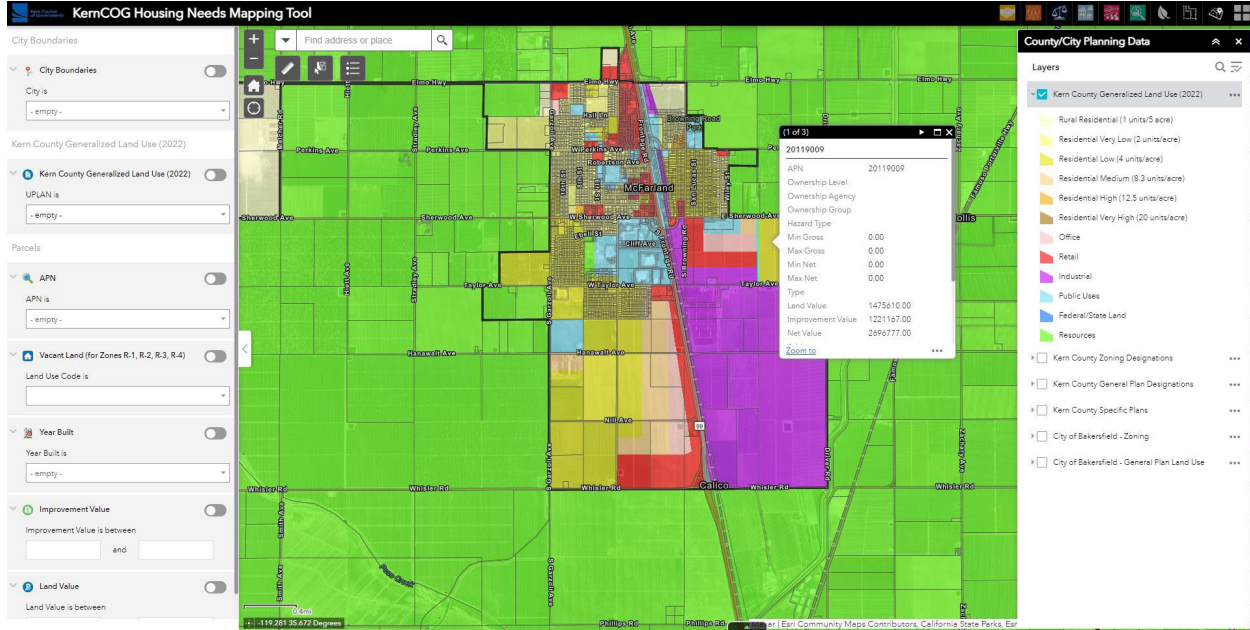
Transparency

The transparency of each layer is adjustable to customize overlapping data layers. To change the transparency of a layer, click on the three dots to the right of the layer name in the right-hand side panel. Select “Transparency”. An adjustable scale appears immediately above the selected layer. Once the desired transparency is set, click on any white space in the right-hand side panel to close the edit table.



Data Window (Pop Up's)

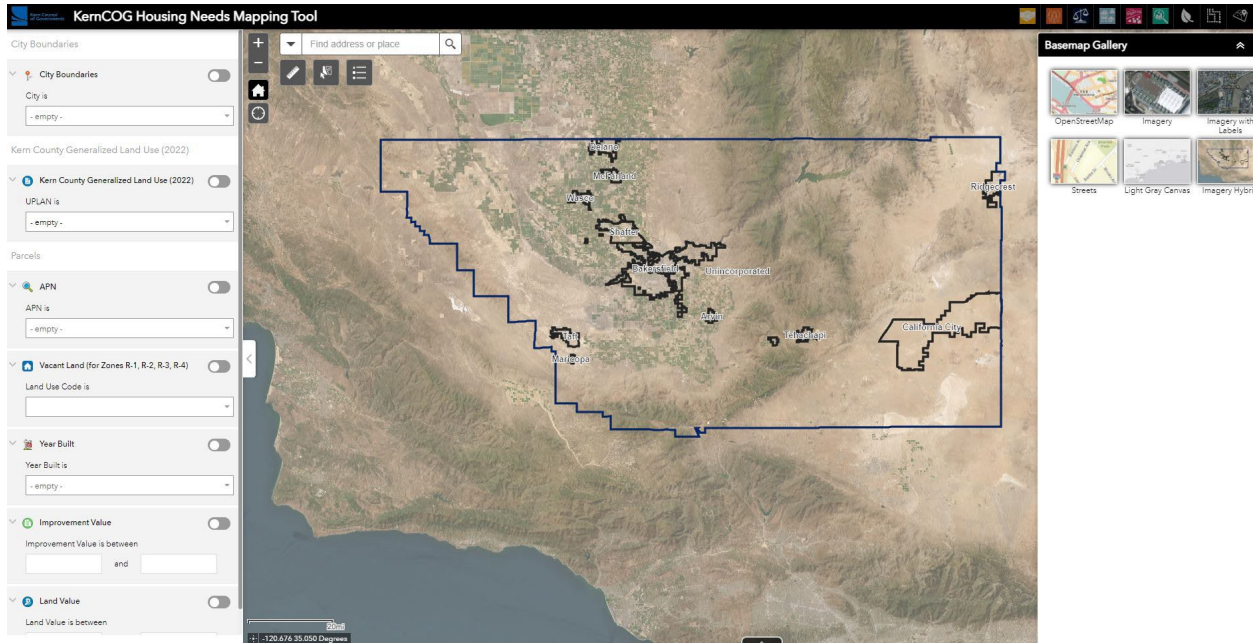
The data layers within the tool are interactive. To view associated data and details for a particular data layer, click on the area of interest within the tool. Use the scroll bar in the information window to explore the available data.



Basemap

The tool defaults to a standard imagery basemap. The basemap can be changed by using the “Basemap Gallery” tab located in the upper left-hand corner. Road labels will appear when zooming in to a specific area.

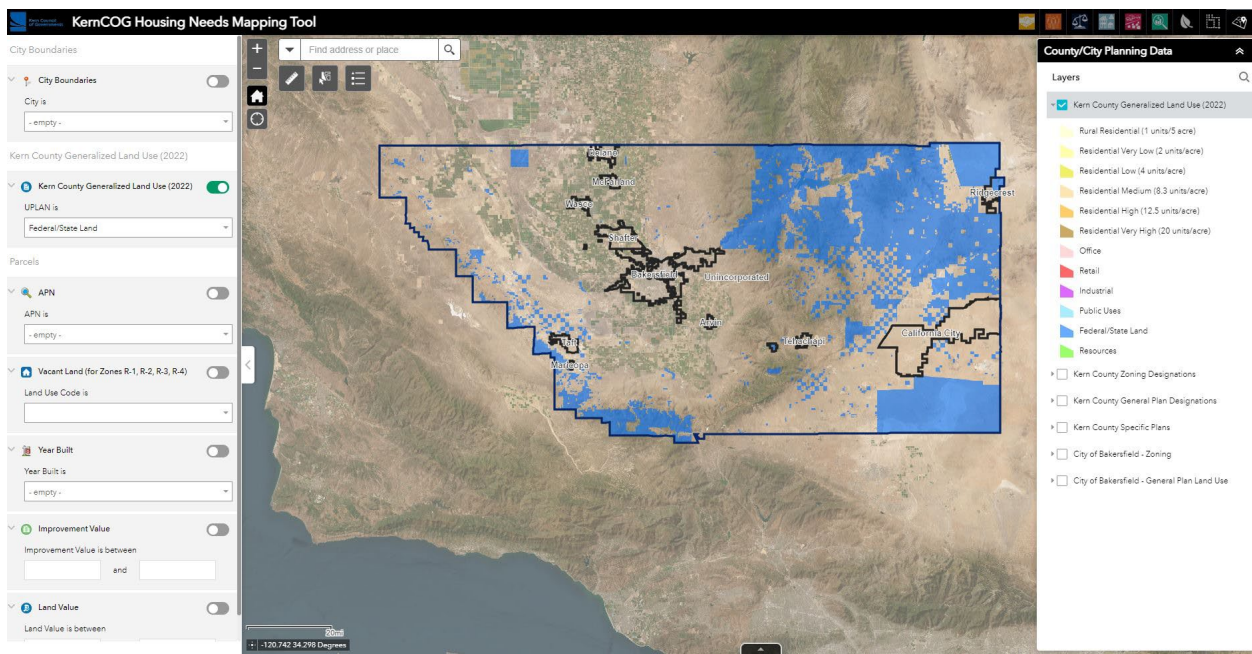
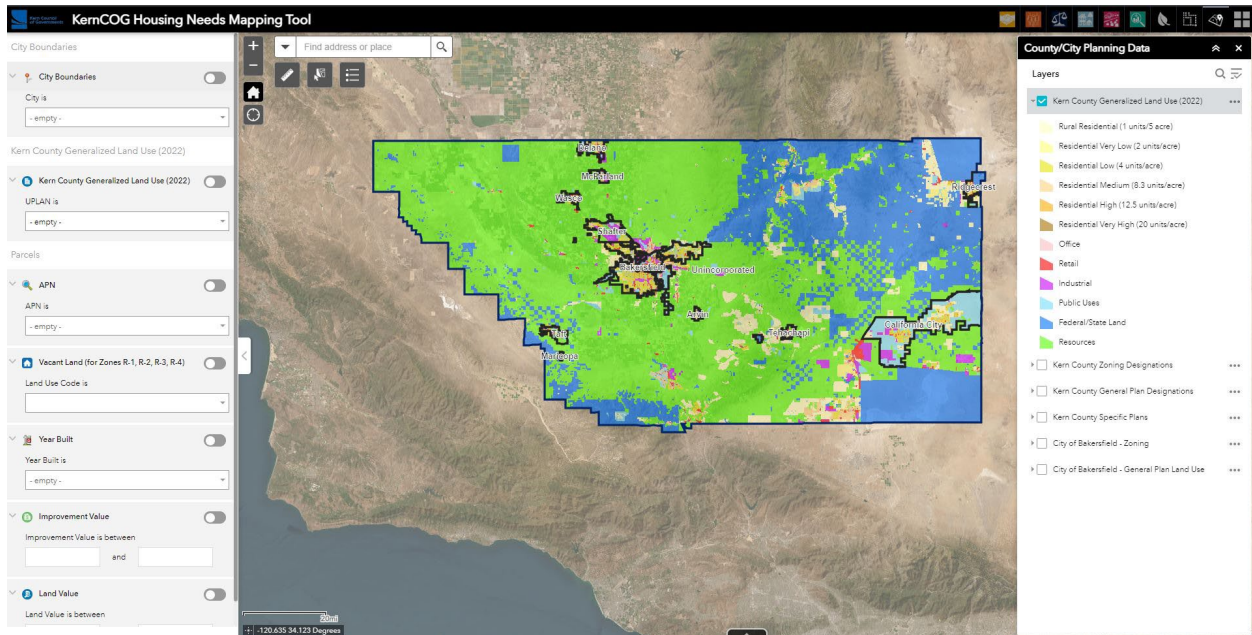
- To change the application basemap, select the “Basemap Gallery” tool in the upper left-hand corner immediately underneath the address search bar.
- A list of available basemaps appears
- Select the desired basemap by clicking on the desired basemap thumbnail in the menu.



Filters

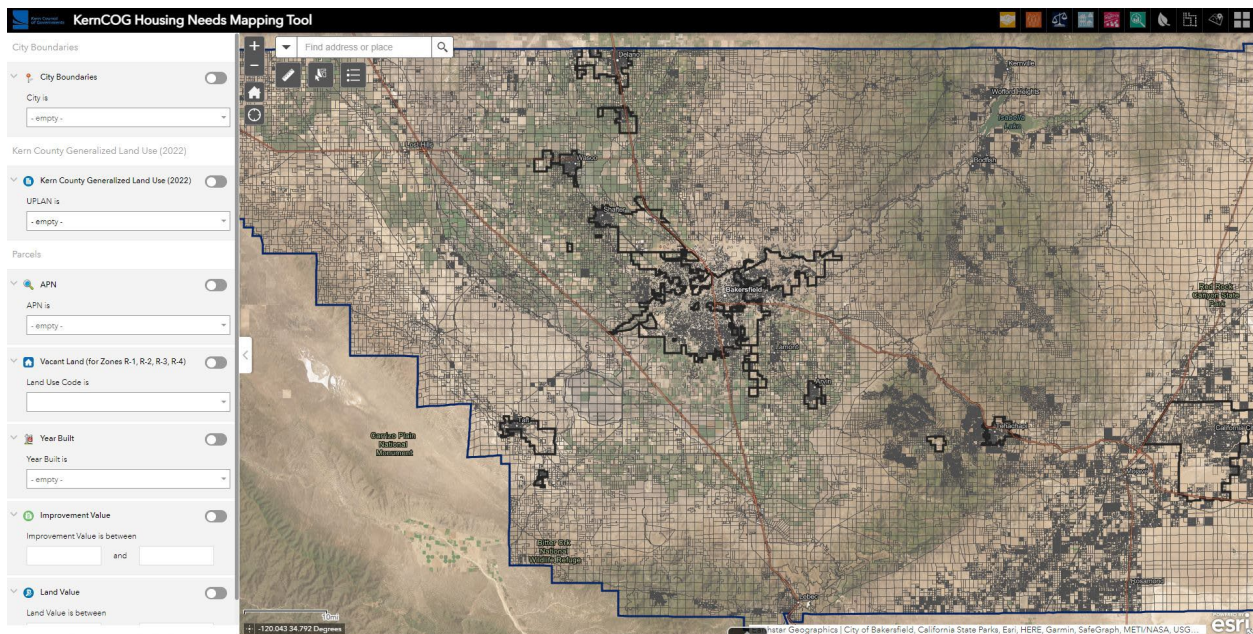
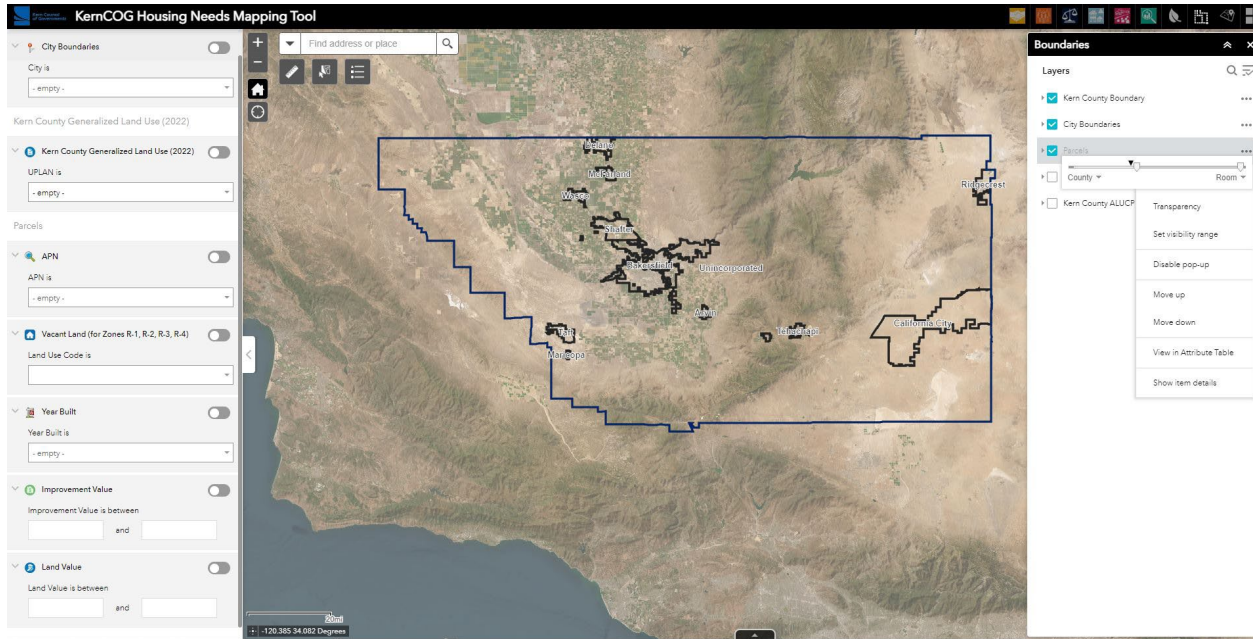
The filters on the left hand side allow the user to set specific parameters to search certain layers. To use the filters, select a drop down option or input a value range and toggle the filter on. Make sure the layer is visible in the right hand panel within the data tabs in the upper right hand corner.

Note: A generalized layer of all General and Specific Plans in Kern County to be used as an input layer for UPlan land use modeling.

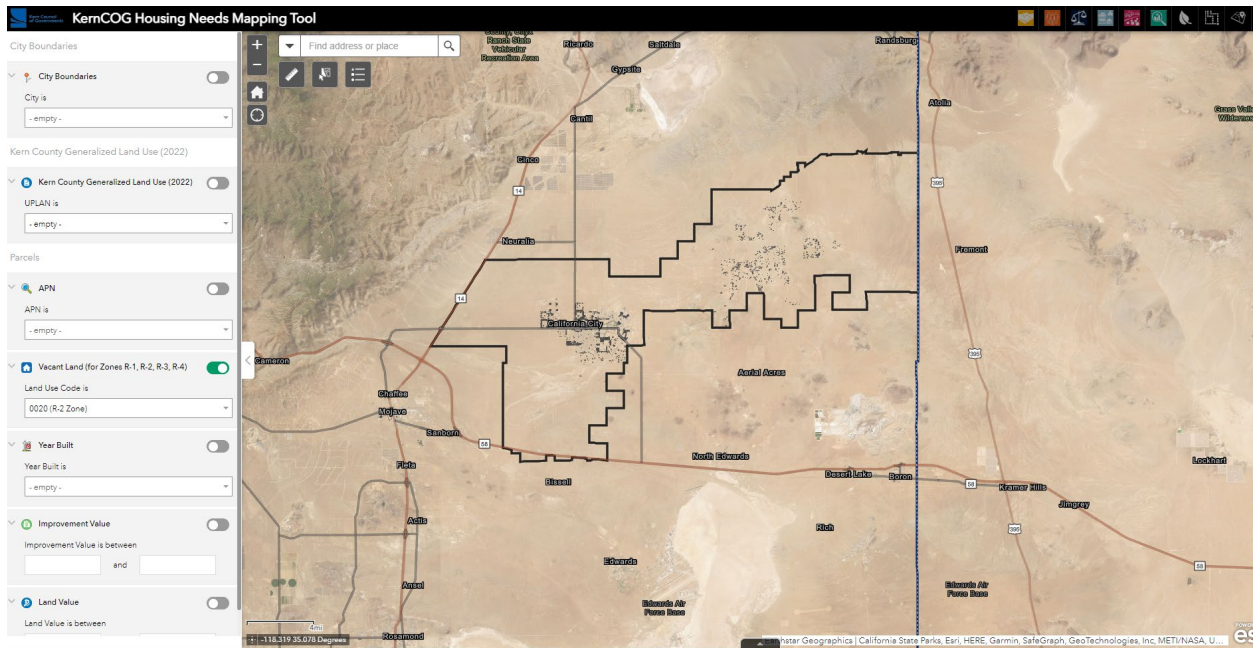
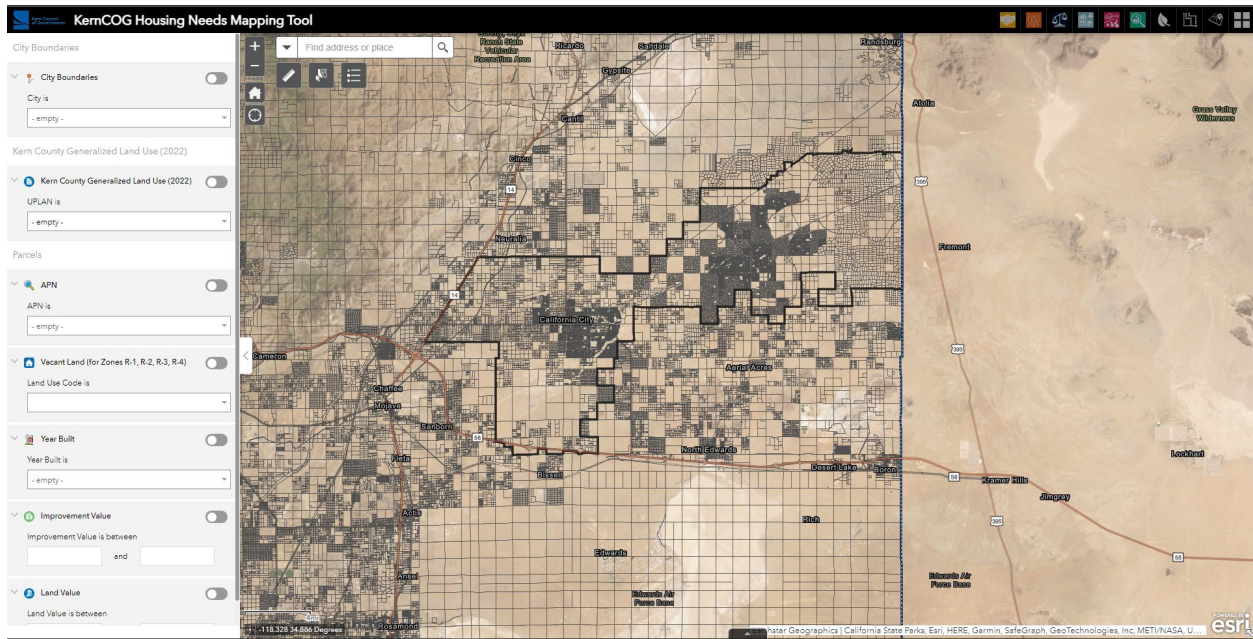


Parcel Filter

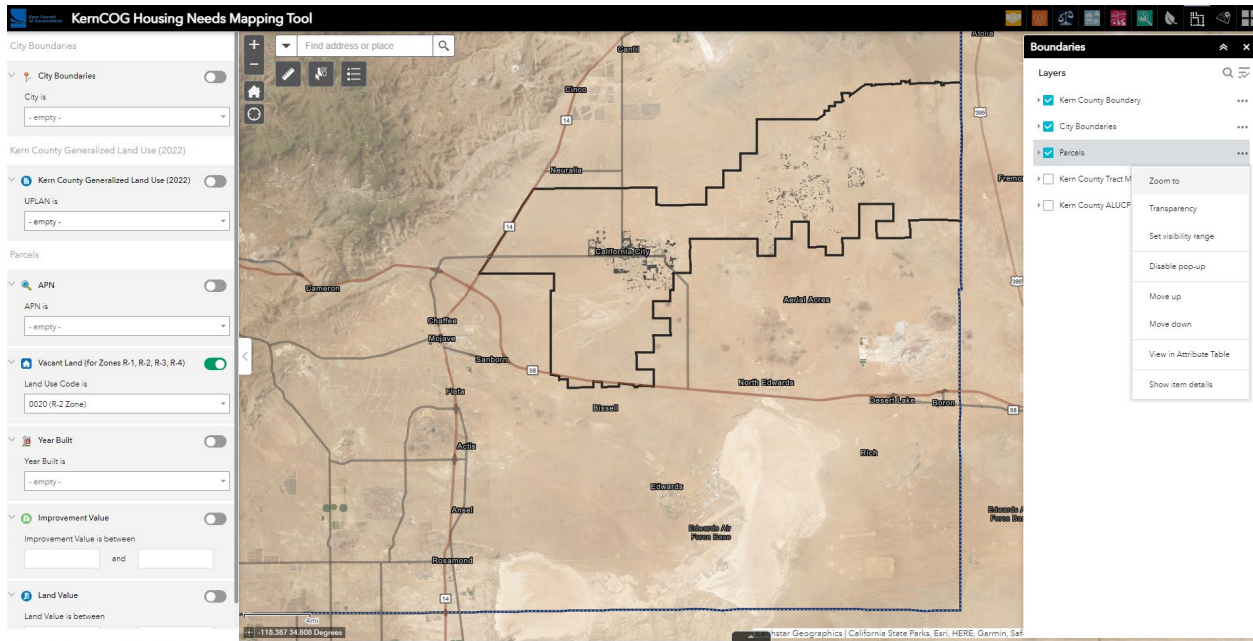
The Parcel layer default visibility range is set at the “County” level due to the size of the parcel dataset. It is recommended to keep the visibility range to County for best performance. Zoom in from the main map extent to make the parcel layer visible.



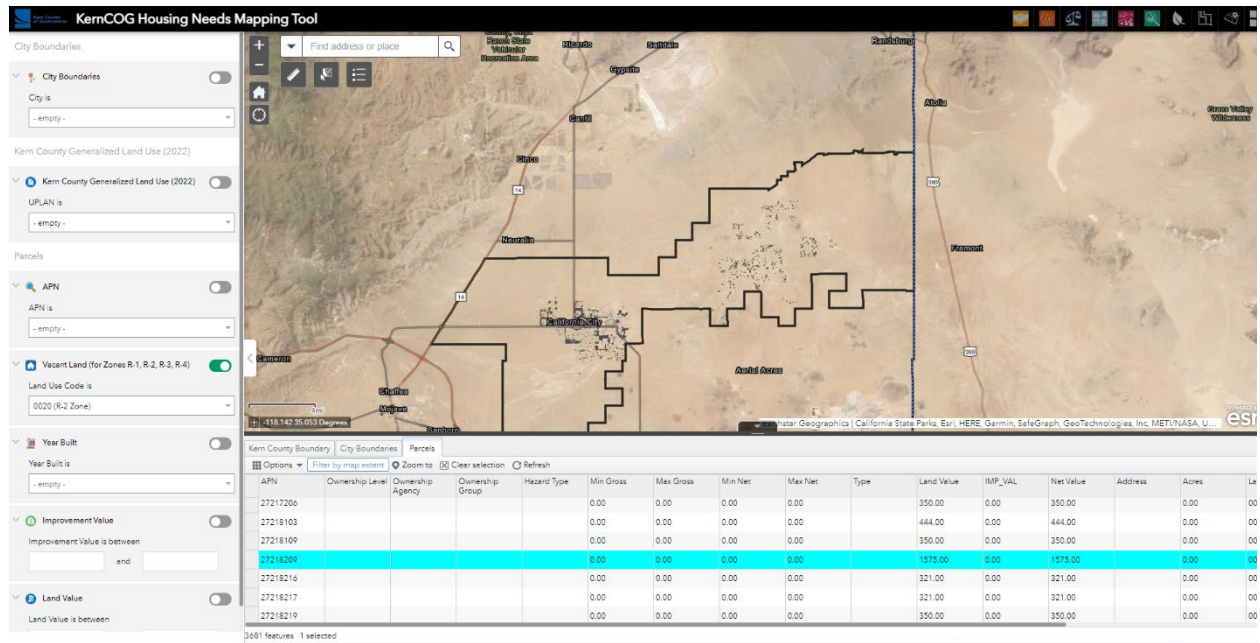
Once the parcel layer is visible on the map and a parcel filter is applied, only parcels within the filter parameters will be visible in the map.



It is also recommended to view filtered parcels in the attribute table. To view the attribute table, go to the parcel layer in the Boundaries data tab and select “View in Attribute Table”.



This will allow the user to view the filtered parcels and zoom into specific parcels as needed. To do so, select the parcel in the attribute table (will be highlighted as shown below) by selecting the grey rectangle to the left of the APN. Use the “Zoom to” function to zoom into the selected parcel. **Due to the size of the parcel layer, please allow the tool time to filter the parcel dataset.**



Kern Council of Governments
Final Regional Housing Needs Allocation
Corrected 1-9-23

Detailed Housing Unit Need (*Not Corrected*)

Jurisdiction	Very-Low Income Units	Low Income Units	Moderate Income Units	Above- Moderate Income Units	Total RHNA Allocation
Arvin	124	79	268	703	1,174
Bakersfield	11,129	7,082	5,317	13,933	37,461
California City	39	25	101	263	428
Delano	324	206	369	967	1,866
Maricopa	1	1	3	8	13
McFarland	50	32	45	117	244
Ridgecrest	379	241	225	591	1,436
Shafter	678	431	603	1,581	3,293
Taft	68	43	108	284	503
Tehachapi	188	119	164	431	902
Wasco	127	81	242	635	1,085
Unincorporated County Areas	1,551	987	1,852	4,852	9,242
Total Kern County	14,658	9,328 (9,327)	9,299 (9,297)	24,365	57,650 (57,647)

Detailed Housing Unit Need (Corrected)

Jurisdiction	Very-Low Income Units	Low Income Units	Moderate Income Units	Above- Moderate Income Units	Total RHNA Allocation
Arvin	124	79	268	703	1,174
Bakersfield	11,129	7,082	5,317	13,933	37,461
California City	39	25	100	263	427
Delano	324	206	369	967	1,866
Maricopa	1	1	3	8	13
McFarland	50	32	45	117	244
Ridgecrest	379	241	225	591	1,436
Shafter	678	431	604	1,581	3,294
Taft	68	43	109	284	504
Tehachapi	188	119	164	431	902
Wasco	127	82	242	635	1,086
Unincorporated	1,551	987	1,853	4,852	9,243
Total Kern County	14,658	9,328	9,299	24,365	57,650



February 1, 2023

TO: Regional Planning Advisory Committee

FROM: Ahron Hakimi,
Executive Director

By: Rob Ball,
Deputy Director/Planning Director

SUBJECT: **INFORMATION ITEM:**
UPDATE: SB 375 GREENHOUSE GAS EMISSION REDUCTION FROM
PASSENGER VEHICLES AND ADOPTION TIMELINE FOR THE 2026 RTP

DESCRIPTION:

The Regional Transportation Plan (RTP) is required to be updated every 4-years and contains a long range 24-year transportation expenditure portfolio fulfilling numerous policies and regulations including but not limited to public involvement, social equity, air quality conformity, congestion management, and Senate Bill (SB) 375 per capita greenhouse gas (GHG) reduction targets.

DISCUSSION:

This discussion provides update on the activity related to the RTP and the SB 375 Sustainable Communities Strategy (SCS).

January 20, 2023 – The California Air Resources Board (ARB) responded to Kern COGs SCS technical methodology submittal from November 29, 2022 with questions. A follow-up meeting was schedule for January 24, 2023 to further clarify the questions. ARB is required to provide their finding and recommendations 2 months after the submittal is found to be complete.

December 16, 2022 – The 2022 RTP/Federal Transportation Improvement Program (FTIP) short range program air quality conformity was federally approved. The 2023 FTIP “CTIPS Report” and “Grouped Project Listing” weblinks are available at: <https://www.kerncog.org/2023-ftip/>.

November 29, 2022 – Kern COG submitted the technical methodology data package to the California Air Resources Board (ARB).

July 21, 2022 - the Kern COG Board adopted the 2022 RTP/SCS and associated documents. The documents are available online at <https://www.kerncog.org/category/docs/rtp/>.

Table 1 – 2018 & 2022 SB 375 Targets for the Kern Region

Per Capita GHG Reduction Target/	2020	2035
2022 RTP/SCS demonstration (July 21, 2022) w/ required off-model adjustments (2020 is pre-COVID)	-10.9%	-15.1%
2018 RTP/SCS demonstration (August 15, 2018)	-12.5%	-12.7%
Targets for 2022 RTP/SCS (set March 22, 2018 by ARB, effective October 1, 2018)	- 9%	-15%

March 22, 2018 - ARB adopted new SB375 Targets for the third cycle RTP/SCS to be effective October 1, 2018. Next ARB target setting will be during the 2022-2026 window.

June 13, 2017 - ARB released proposed targets that were 2 percentage points higher than what Kern COG recommended for 2035. The related ARB documents are available online at <https://www.arb.ca.gov/cc/sb375/sb375.htm> . Kern COG's April target recommendation letter is located on page B-143 of the ARB staff report at https://www.arb.ca.gov/cc/sb375/appendix_b_mpo_scenario_and_data_submittals.pdf . Kern COG and the 8 San Joaquin Valley COG's prepared individual letters and a joint comment letter. The letters document methodological changes that make it difficult to compare the 2014 RTP results with the latest modeling refinements.

Preliminary Timeline 2026 RTP/SCS

- Spring 2023 – ARB findings on 2022 SCS
- Spring 2023 – Adopt Public Involvement Procedure for 2022 RTP/SCS
- Spring 2023 to Spring 2026 – Annual Community Phone Surveys
- Spring 2023 – Spring 2022: RTP/SCS Public Outreach Process
- Fall 2023 – Adopt Regional Growth Forecast Update
- Fall 2023 – Stakeholder roundtable process to vet outreach and performance measures
- Fall 2023 to Fall 2025 – Fairs/Festivals/Farmer's Market Outreach
- Fall 2024 to Spring 2025 – Mini-Grant Stakeholder Hosted Workshops
- Summer 2026 Adopt RTP/SCS, EIR and associated documents

2023 TRUCKING WITH CLEAN FUELS CONFERENCE + ZERO EMISSION CONVOY



FREIGHTLINER

NIKOLA XOS



BYD



Peterbilt

NEW FLYER **FET bus**
SUSTAINABLE TRANSPORT DISTRICT

MOTIV
DELIVERS

KENWORTH



Ford

San Joaquin Valley
Clean Cities Coalition



Trucking with Clean Fuel Conference

Vehicles - Infrastructure - Energy - Incentives - Regulations

February 23rd, Bakersfield, CA - 8:30am to 4pm

SPONSORED BY



Kern Council of Governments

KCCCD
KERN COMMUNITY COLLEGE DISTRICT

SUPPORTED BY



San Joaquin Valley ELECTRIC VEHICLE PARTNERSHIP



San Joaquin Valley AIR POLLUTION CONTROL DISTRICT



PROJECT CLEAN AIR



KTF
Kern Transportation Foundation

noodoe EV



CALIFORNIA AIR RESOURCES BOARD



Clean Transportation

WattEV

e-Mission Control
A MOMENTUM COMPANY



SAN JOAQUIN VALLEY NATURAL GAS PARTNERSHIP



GreenStruxure™

Tickets: ProjectCleanAir.us/2023TCFC

For more information, call 855-500-5250 or email info@zerorig.com

ZERO RIG