

**KERN COUNCIL OF GOVERNMENTS
MEETING OF REGIONAL PLANNING ADVISORY COMMITTEE
TRANSPORTATION MODELING COMMITTEE**

**KERN COG BOARD ROOM
1401 19TH STREET, THIRD FLOOR
BAKERSFIELD, CALIFORNIA**

**WEDNESDAY
July 2, 2025
1:30 P.M.**

Dial +1 (312) 878-3080
Access Code: 586-617-702

<https://global.gotomeeting.com/join/586617702>

I. ROLL CALL:

- II. PUBLIC COMMENTS:** This portion of the meeting is reserved for persons to address the Committee on any matter not on this agenda but under the jurisdiction of the Committee. Committee members may respond briefly to statements made or questions posed. They may ask a question for clarification; make a referral to staff for factual information or request staff to report back to the Committee at a later meeting. **SPEAKERS ARE LIMITED TO TWO MINUTES. PLEASE STATE YOUR NAME AND ADDRESS FOR THE RECORD PRIOR TO MAKING A PRESENTATION.**

Disabled individuals who need special assistance to attend or participate in a meeting of the Regional Planning Advisory Committee may request assistance at 1401 19th Street, Suite 300; Bakersfield CA 93301 or by calling (661) 635-2910. Every effort will be made to reasonably accommodate individuals with disabilities by making meeting material available in alternative formats. Requests for assistance should be made at least three (3) working days in advance whenever possible.

III. APPROVAL OF DISCUSSION SUMMARY

- A. Meeting of April 30, 2025.

IV. REGIONAL GROWTH ALLOCATION (Raymond)

Comment: Kern COG has prepared a draft growth allocation of the Kern Regional Growth Forecast at the transportation analysis zone (TAZ) level for growth between the year 2024-2049.

Action: Receive comments to prepare base assumptions. Information.

V. UPDATE: SB 375 GREENHOUSE GAS EMISSION REDUCTION FROM PASSENGER VEHICLES AND ADOPTION TIMELINE FOR THE 2026 RTP (Raymond)

Comment: The Regional Transportation Plan (RTP) is required to be updated every 4-years and contains a long range 24-year transportation expenditure portfolio fulfilling numerous policies and regulations including but not limited to public involvement, social equity, air quality conformity, congestion management, and Senate Bill (SB) 375 per capita greenhouse gas (GHG) reduction targets.

Action: Information.

VI. COMMUNITY AT LARGE VOTING MEMBERS (Napier)

Comment: Staff recruited for three (3) Community at Large Voting Members for the Regional Planning Advisory Committee (RPAC).

Action: Information/Committee Direction.

VII. ANNOUNCEMENTS

- a. COMMUNITY-BASED OUTREACH MINI-GRANT PROGRAM FOR THE 2026 REGIONAL TRANSPORTATION PLAN SUSTAINABLE COMMUNITIES STRATEGY (Susanne Campbell)

VIII. MEMBER ITEMS

IX. ADJOURNMENT

The next meeting is scheduled for Wednesday, August 6, 2025.

KERN COUNCIL OF GOVERNMENTS
REGIONAL PLANNING ADVISORY COMMITTEE
TRANSPORTATION MODELING COMMITTEE

KERN COG CONFERENCE ROOM
1401 19TH STREET, THIRD FLOOR
BAKERSFIELD, CALIFORNIA

WEDNESDAY
April 30, 2025
1:30 P.M.

Chairman Staples called the meeting to order at 1:32 p.m.

I. ROLL CALL:

RPAC MEMBERS PRESENT:	Mark Staples	Taft
	Isaiah Medina	Arvin
	Christine Chavez	Delano
	Brianna Delon	McFarland
	Steve Esselman	Shafter
	Andrea Nason	Caltrans
	David Deels	Caltrans
KERN COG STAFF:	Ben Raymond	Rob Ball
	Rochelle Invina-Jayasiri	Karl Davisson

OTHERS:

II. **PUBLIC COMMENTS:** This portion of the meeting is reserved for persons to address the Committee on any matter not on this agenda but under the jurisdiction of the Committee. Committee members may respond briefly to statements made or questions posed. They may ask a question for clarification; make a referral to staff for information or request staff to report to the Committee at a later meeting. **SPEAKERS ARE LIMITED TO TWO MINUTES. PLEASE STATE YOUR NAME AND ADDRESS FOR THE RECORD PRIOR TO MAKING A PRESENTATION.**

None.

III. **APPROVAL OF DISCUSSION SUMMARIES**

- RPAC Meeting of February 5, 2025

Committee Member Esselman made a motion to approve the minutes of February 5, 2025; seconded by Committee Member Chavez, unanimously approved by voice vote.

IV. **REGIONAL GROWTH ALLOCATION** (Raymond)

Comment: Ben Raymond presented the 2024-2035 Regional Growth Allocation sharing how to access and view the maps of the data online and answered questions.

Action: Information. (Comments are due April 30th by end of the day).

V. **UPDATE: SB 375 GREENHOUSE GAS EMISSION REDUCTION FROM PASSENGER VEHICLES AND ADOPTION TIMELINE FOR THE 2026 RTP** (Ball)

Comment: Ben Raymond shared an update on SB 375 target setting meetings held by California Air Resource Board (CARB), CARB will host another SB 375 workshop on May 21st.

Action: Information.

VI. COMMUNITY AT LARGE VOTING MEMBERS (Napier)

Comment: Ben Raymond informed the committee that no applications were received for Community at Large Voting Members. Committee members from Taft, Delano, Shafter, and McFarland directed staff to readvertise the vacant positions.

Action: Information.

VII. ANNOUNCEMENTS

- CA Department of Housing and Community Development (HCD) deadline for Annual Progress Reports – Karl Davisson reminded member agencies that housing element progress reports were due to HCD.
- KARGO Workshops – Karl Davisson provided multiple dates in May that Kern COG will be hosting KARGO Study Workshops. Additional information is available at: www.kerncog.org/kargo/

VIII. MEMBER ITEMS

None

IX. ADJOURNMENT

With no other business, the meeting was adjourned at 1:58 p.m. The next scheduled meeting of the RPAC is June 4, 2025.



IV. RPAC

July 2, 2025

TO: Regional Planning Advisory Committee

FROM: JAY SCHLOSSER
EXECUTIVE DIRECTOR

By: Ben Raymond, Regional Planner

SUBJECT: Regional Planning Advisory Committee Agenda Item IV.
REGIONAL GROWTH ALLOCATION

DESCRIPTION:

Kern COG has prepared a draft growth allocation of the Kern Regional Growth Forecast at the transportation analysis zone (TAZ) level for growth between the year 2024-2049.

DISCUSSION:

Background

Growth Forecast – Kern COG adopted the 2024-2050 regional growth forecast at its April 18th Board meeting in 2024. The Regional Growth Forecast is available at: <https://www.kerncoq.org/estimates-and-projections/>. The growth forecast is a long-range projection for countywide total population. The population total is used to develop housing, employment, school enrollment, and income forecasts. The forecast will serve as the growth assumption for the 2026 Regional Transportation Plan/Sustainable Communities Strategy (RTP/SCS). The RPAC and Transportation Modeling Committee (TMC) are charged with overseeing changes to the growth forecast allocations at Regional Statistical Area (RSA) subregion level and the transportation analysis zone (TAZ) level. The regional growth forecast included preliminary summaries for 13 RSA subregions. Kern COG utilizes a growth allocation model (Uplan) to distribute each subregions growth to the TAZ level.

Uplan Growth Model (land use model) – The Uplan model allocates growth based on latest land use and planning assumptions. This tool allows Kern COG to develop and present the public with scenarios as required for the development of Kern COG's SCS. Many input layers are used to represent latest planning assumptions in the land use model. Some of the key input layers are: the general plan layer (generalized land use layer), existing urban mask, and growth attractors (infrastructure, tentative tracts, etc.). Kern COG's latest land use model documentation is available under the "Additional Documents" section at: <https://www.kerncoq.org/model-documentation/>

Growth Allocation

Kern COG generated a draft distribution of the midterm growth from the Kern Regional Growth Forecast to the transportation analysis zone level for growth between 2024-2035 and presented the data at the April 2nd, 2025, RPAC meeting. Member agencies were asked to provide feedback and comments by April 16th. Kern COG revised 2024-2035 growth allocation based on comments received and presented the revised data at the April 30th RPAC meeting.

Since the April 30th RPAC meeting, Kern COG staff have prepared a distribution of the long-term growth 2035-2049 from the Kern Regional Growth Forecast. The long-term growth was allocated to TAZ level geography. The midterm growth plus the long-term growth represent the draft allocation of the Regional Growth Forecast for developing the 2026 RTP/SCS to the planning horizon year of 2049.

The RSA Subregion Summary Table is attached. Kern COG has prepared a map of the 2024-2049 Draft TAZ Growth Allocation, available for review at: <https://www.kerncog.org/maps/>. The Draft TAZ allocation represents a base for developing scenarios for the 2026 RTP.

Comments will be used in the following timeline for the 2026 RTP/SCS development:

June-July 2025 – Scenario development for the 2026 RTP/SCS

August-Sept 2025 – Public workshops for the scenarios

November 2025 – 2026 RTP/SCS for internal review/begin preparing the Draft RTP/SCS/PEIR

March 2026 – DRAFT RTP/SCS/PEIR 55-day Public Review and Comment

June 2026 – Adopt RTP/SCS, EIR and associated documents

ACTION: Receive comments to prepare base assumptions. Information.

Attachment A provides a summary of the distribution by RSA subregion.

Attachment B is a map of the RSA Subregions.

Map of Growth Allocation TAZ Data available at: <https://www.kerncog.org/maps/>

Attachment A - RSA Subregion Summary Tables

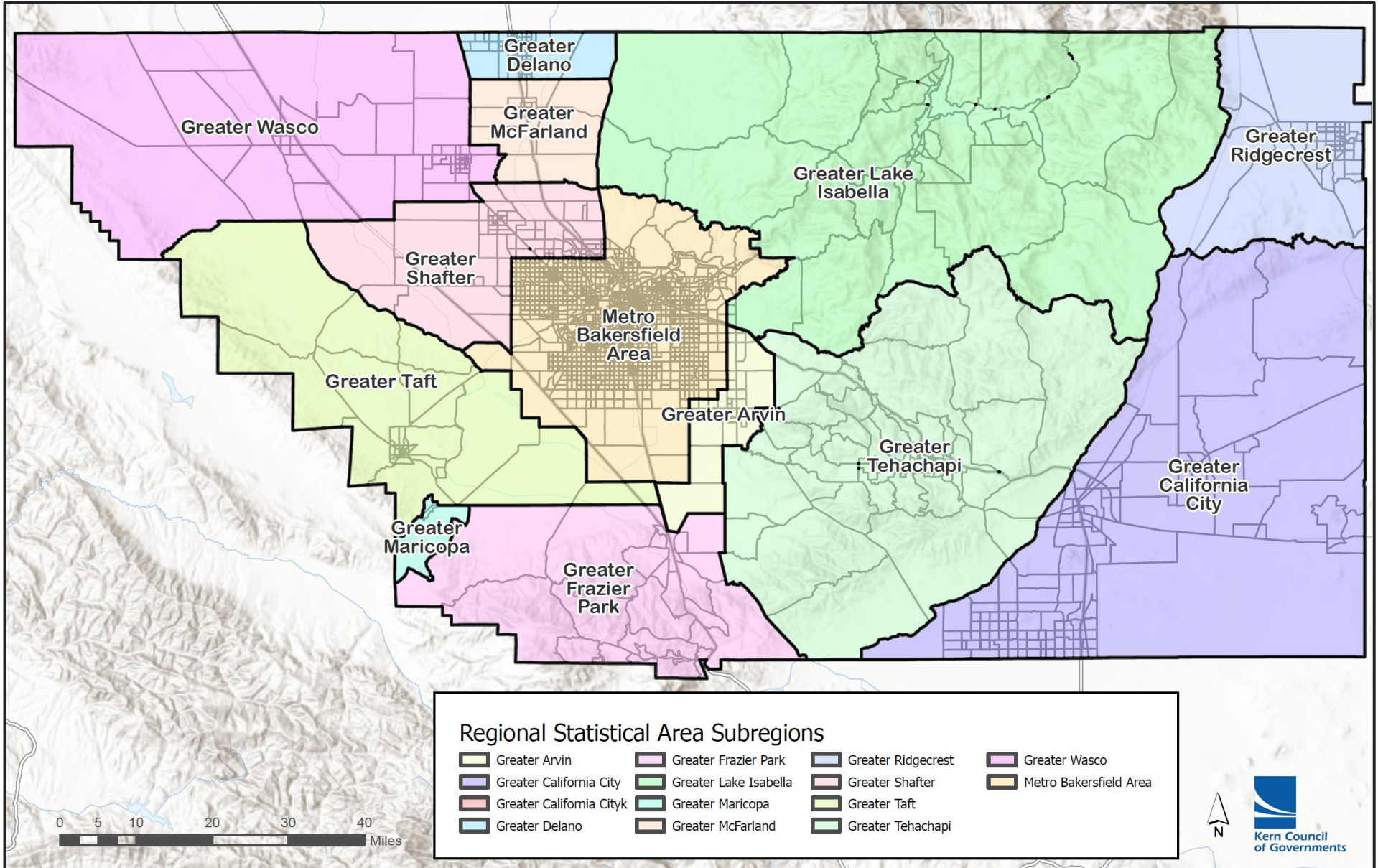
EMPLOYMENT GROWTH 2024-2049 By RSA Subregion	2022RTP	2026RTP Draft Allocation 3/24/25
	Employment Growth (2020-2046)	Employment Growth (2024-2049)
Greater Arvin	638	795
Greater Cal City/Mojave	3,349	5,056
Greater Delano	1,428	1,629
Greater Frazier Park	12,076	12,329
Greater Lake Isabella	159	238
Greater Maricopa	5	-
Greater McFarland	685	2,214
Greater Ridgecrest	2,190	2,490
Greater Shafter	7,971	13,876
Greater Taft	1,422	1,264
Greater Tehachapi	1,897	1,659
Greater Wasco	1,660	1,245
Metro Bakersfield	27,034	38,705
TOTAL	60,515	81,500

2022RTP	2026RTP Draft Allocation 3/24/25
Annualized	Annualized
25	32
129	202
55	65
464	493
6	10
0	-
26	89
84	100
307	555
55	51
73	66
64	50
1,040	1,548
2,327	3,260

HOUSEHOLD GROWTH 2024-2049 By RSA Subregion	2022RTP	2026RTP Draft Allocation 3/24/25
	Household Growth (2020-2049)	Household Growth (2024-2049)
Greater Arvin	597	589
Greater Cal City/Mojave	4,537	1,439
Greater Delano	745	1,684
Greater Frazier Park	13,663	13,888
Greater Lake Isabella	231	125
Greater Maricopa	11	3
Greater McFarland	770	1,150
Greater Ridgecrest	1,273	1,031
Greater Shafter	4,501	4,940
Greater Taft	942	488
Greater Tehachapi	2,713	1,962
Greater Wasco	2,189	1,724
Metro Bakersfield	41,486	32,077
TOTAL	73,658	61,100

2022RTP	2026RTP Draft Allocation 3/24/25
Annualized	Annualized
23	24
175	58
29	67
526	556
9	5
0	0
30	46
49	41
173	198
36	20
104	78
84	69
1,596	1,283
2,833	2,444

ATTACHMENT B
 REGIONAL STATISTICAL AREA (RSA) SUBREGIONS





V.
RPAC

July 2, 2025

TO: Regional Planning Advisory Committee

FROM: JAY SCHLOSSER
EXECUTIVE DIRECTOR

By: Rob Ball, Deputy Director/Planning Director
Ben Raymond, Regional Planner

SUBJECT: Regional Planning Advisory Committee Agenda Item: V.
UPDATE: SB 375 GREENHOUSE GAS EMISSION REDUCTION FROM
PASSENGER VEHICLES AND ADOPTION TIMELINE FOR THE 2026 RTP

DESCRIPTION:

The Regional Transportation Plan (RTP) is required to be updated every 4-years and contains a long range 24-year transportation expenditure portfolio fulfilling numerous policies and regulations including but not limited to public involvement, social equity, air quality conformity, congestion management, and Senate Bill (SB) 375 per capita greenhouse gas (GHG) reduction targets.

DISCUSSION:

This discussion provides an update on the activity related to the RTP and the SB 375 Sustainable Communities Strategy (SCS). The report is updated regularly with the most recent developments listed first.

May 21st – June 4th, 2025 – Kern COG hosted four hybrid (in-person/online) community workshops and three online workshops collecting input on the KARGO Community Prosperity/Protection Study and Freight related projects for the RTP/SCS. Workshops were held in Arvin, California City, Keene, and Shafter.

May 13, 2025 – CARB formally adopted their determination that Kern COG's 2022 RTP/SCS, when implemented, would achieve the SB 375 Target Reductions by 2035. In June 2023, Kern COG had received an email from CARB to notify that the 2022 SCS was "officially approved."

April 23, 2025 – SB 375 Target Setting Update – Kern COG staff is participating in a workshop hosted by California Air Resources Board (ARB) for Metropolitan Planning Organizations (MPO) to discuss SB 375 Target Updates and other SB 375 program-related items.

April 17, 2025 – Kern COG Annual Statistically Valid Community Survey was conducted in January. Survey results have been compiled and presented to the Kern COG board at the April Board Meeting. Results of the Annual Community Survey are available on Kern COG's website.

September 18th – 29th, 2024 – Kern COG collected input for 2026 RTP/SCS and collected input on transportation issues in the community at the Kern COG booth during the Kern County Fair.

July 24th – August 2nd, 2024 – Kern COG hosted four community workshops collecting input on the KARGO Community Prosperity/Protection Study and Freight related projects for the RTP/SCS. Workshops were held in Greater Arvin area (at the Tejon Indian Tribe Community Center), Delano, Rosamond, and Tehachapi.

June 28, 2024 – Kern COG submitted to the ARB the Kern COG 2026 SCS Technical Methodology and responses to their draft comments on the 2022 SCS. ARB staff responded that their final comments on the 2022 SCS are moving up their management reviews. As of July 22, the final comments have yet to be provided.

May 20, 2024 – Kern COG hosted an outreach roundtable as part of the Kern Area Regional Goods-movement Operations (KARGO) Study. The latest KARGO Study will feed into the 2026 RTP and host series of outreach events to collect input of the study in coordination with the 2026 RTP development. At the roundtable meeting attendees from community based organizations, and local/state agencies provided feedback on the outreach plan.

May 3, 2024 – Golden Empire Transit (GET) hosted a workshop on the Metro Bakersfield Moves – Long-Range Transit Plan (LRTP). The LRTP is a key input in the development of the 2026 RTP. During the outreach process for the LRTP, survey collected public input for both the LRTP and the RTP.

April 18, 2024 – The Kern COG Board adopted the 2024-2050 Regional Growth Forecast. The Regional Growth Forecast establishes population forecasts for the horizon of the 2026 RTP.

February 20, 2024 – ARB provided another email re-confirming that they officially accept Kern COG's 2022 SCS, and provided a draft of 11 recommendations for the 2026 SCS. No estimate on when their final acceptance letter will be submitted.

January 9, 2024 and November 2, 2023 – ARB provided an email updates on the status of Kern COG's promised 2022 RTP/SCS acceptance letter. A key upper management review person is not available this month pushing the issuance of the final letter into 2024, 7-months after ARB indicated acceptance of Kern COG's SCS in their June 13th email.

August 10, 2023 - ARB staff announced at the quarterly San Joaquin Valley Inter-Agency Consultation meeting that Kern, Stanislaus, and Tulare COGs have received their approval and will receive official documentation in September. Fresno and San Joaquin COGs have completed their reviews and are in the process of making some required board actions before they can receive their official approval. Kings, Madera, and Merced are still under review by ARB staff.

July 26, 2023 – 2026 RTP/SCS Roundtable Meeting was held for environmental, equity, business & industry groups on the public outreach process at Kern COG and included 14 representatives

from the Delores Huerta Foundation, Central California Asthma Collaborative, Sierra Club, Home Builders Association, Golden Empire Transit, Caltrans, County Public Works, and staff from the cities of McFarland, Taft, and Wasco.

July 13, 2023 - ARB staff emailed Kern COG and the California, the final acceptance letter is still working its way through upper management reviews and may not be issued till September due to staffing and vacation issues.

June 15, 2023 – Kern COG Board approved the 2023 Public Involvement Procedures document after a 45-day public review. The document is online at <https://www.kerncog.org/policies/> .

June 13, 2023 – ARB staff emailed Kern COG and the California Transportation Commission that “the SCS is officially approved.” However, the final acceptance letter is still working its way through upper management reviews and will take several weeks before it is issued.

May 19, 2023 – ARB staff acknowledged receipt of the requested transmittal letter signed by the Kern COG Chair, and associated TPPC staff report. ARB staff indicated they would provide a status update by May 31, and try to meet Kern COG’s request for an expedited review by June 8, but that they could not commit to any date earlier than June 27.

May 5, 2023 - Kern COG submitted a draft of a Kern COG TPPC staff report and transmittal letter to ARB with a request for the Kern COG Chair to sign. The item was approved by the Board on May 18, 2023, and signed by the Chair. The letter documents technical changes that do not affect the adopted RTP/SCS text or conclusions. The document contains updates from the November 2022 SCS technical data submittal to ARB consistent with ARB guidelines.

May 1, 2023 – Kern COG circulated the draft Public Involvement Procedure for 45-day public review period to be concluded on June 15. In addition, the Kern COG Executive Director and other COG directors from the San Joaquin Valley met with the SJV representative on the California Air Resources Board. At that meeting ARB staff indicated that Kern was close to receiving the acceptance finding for their SCS.

April 26, 2023 – Kern COG submitted to ARB a cover letter and revised technical methodology data submittal with all the requested updates since the November data submittal. ARB requested that the Kern COG’s chair’s signature be approved by the Kern COG Board,

April 17, 2023 – Kern COG web conferenced with ARB staff for the 14th time in 3 years to discuss the 2022 SCS technical methodology. One final methodology issue remains out of 27 identified in CARB’s January 20th memorandum. Additional adjustments were made to the elasticity used to adjust the hybrid NCST tool method used by Fresno COG. Documentation of the adjustment was submitted to ARB on April 18, 2023. ARB is required to provide their findings and recommendations 2 months after the submitted package from Nov. 29, 2023, is found complete.

February 17, March 29, April 7, April 14, 2023 – Kern COG web conferenced with ARB to further refine SCS modeling methodology and in February provided draft comments on the 2022 SCS.

January 20, 2023 – ARB responded to Kern COGs SCS technical methodology submittal from November 29, 2022 with questions. A meeting was held on January 24, 2023, to clarify questions.

December 16, 2022 – The 2022 RTP/Federal Transportation Improvement Program (FTIP) short range transportation program air quality conformity was federally approved.

November 29, 2022 – Kern COG submitted the technical methodology data package to the ARB.

July 21, 2022 - the Kern COG Board adopted the 2022 RTP/SCS and associated documents. The documents are available on the Kern COG website at <https://www.kerncog.org/category/docs/rtp/>.

Table 1 – 2018 & 2022 SB 375 Targets for the Kern Region

Per Capita GHG Reduction Target/	2020	2035
2022 RTP/SCS demonstration (July 21, 2022) w/ required off-model adjustments (2020 is pre-COVID)	-10.9%	-15.1%
2018 RTP/SCS demonstration (August 15, 2018)	-12.5%	-12.7%
Targets for 2022 RTP/SCS (set March 22, 2018, by ARB, effective October 1, 2018)	- 9%	-15%

March 22, 2018 - ARB adopted new SB375 Targets for the third cycle RTP/SCS to be effective October 1, 2018. Next ARB target setting will be during the 2022-2026 window.

Preliminary Timeline 2026 RTP/SCS

- ~~• June 2023 – Update Public Involvement Procedure~~
- ~~• July 2023 – Stakeholder roundtable process to vet outreach and performance measures~~
- ~~• October 17, 2023 – Comment Due on Early Draft 2026 Capital Improvement Program~~
- ~~• April 2024 – Regional Growth Forecast Update~~
- ~~• **June 11, 2024, Friday, 7-10am – Bakersfield Downtown Transit Ctr.** – Long-Range Transit Plan Update walk-up event~~
- ~~• **June 11, 2024, Friday, 2-5pm – Bakersfield SW Transit Ctr. at Valley Plaza** – Long Range Transit Plan walk-up event~~
- ~~• **July-August 2024** – KARGO Community Prosperity/Protection Study RTP/SCS Freight Outreach Events~~
- ~~• April 2025 – Annual Statistically Valid Community Phone Surveys~~
- ~~• May 2025 – KARGO Community Prosperity/Protection Study RTP/SCS Freight Outreach Events~~
- July 2025 – Transportation Modeling Committee Special Meeting
- July 2025 – Mini-Grant RFP Release
- Spring 2023 to Spring 2026 – RTP/SCS Public Outreach Process
- Spring 2023 to Spring 2026 – Annual Statistically Valid Community Phone Surveys
- September each year – Technical Assistance Requests to Kern COG Due
- Fall 2023 to Fall 2025 – Fairs/Festivals/Farmer’s Market Outreach
- Fall 2024 to Fall 2025 – Mini-Grant Stakeholder Hosted Workshops
- Summer 2026 Adopt RTP/SCS, EIR and associated documents.

ACTION: Information.



VI. RPAC

July 2, 2025

TO: Regional Planning Advisory Committee

FROM: Jay Schlosser
Executive Director

By: Becky Napier
Deputy Director - Administration

SUBJECT: REGIONAL PLANNING ADVISORY COMMITTEE AGENDA ITEM: VI.
COMMUNITY AT LARGE VOTING MEMBERS

DESCRIPTION:

Staff recruited for three (3) Community at Large Voting Members for the Regional Planning Advisory Committee (RPAC).

DISCUSSION:

The RPAC By-Laws allow for three Community at Large Voting Members. Staff advertised in the Bakersfield Californian and put the advertisement and the application on the Kern COG website. The advertisement and application were posted on the Kern COG website on February 3, 2025. A Display Advertisement was placed in the Bakersfield Californian on February 5, 2025 and on May 5, 2025. The final application deadline was June 12, 2025. In addition at your request, the Application Packet was sent to the RPAC members so you could recruit potential members.

Staff received zero applications and zero inquiries about the openings. The last time any of the current Community at Large Members attended an RPAC meeting was on October 4, 2023.

Staff is requesting that members of the RPAC discuss this issue and give direction to staff.

ACTION

Information.



DATE: July 17, 2025

TO: INTERESTED PARTIES

FROM: JAY SCHLOSSER, EXECUTIVE DIRECTOR

SUBJECT: COMMUNITY-BASED OUTREACH MINI-GRANT PROGRAM FOR THE 2026 REGIONAL TRANSPORTATION PLAN SUSTAINABLE COMMUNITIES STRATEGY

Overview:

Kern Council of Governments (Kern COG) is seeking assistance from community-based organizations, etc. to solicit public input into key activities associated with the preparation of its **2026 Regional Transportation Plan (RTP)/Sustainable Communities Strategy (SCS)**. Kern COG is requesting help with ensuring diverse and extensive input by further expanding community outreach activities.

Kern COG will provide mini grants up to \$2,500 to community organizations with existing community contacts. Successful applicants will reach out to residents of the Kern County region, include them in the RTP and SCS transportation planning process via workshop and online participation and obtain defined input regarding their perceived transportation needs.

This program is designed to ensure that interested members of the public have ample opportunity to understand and provide meaningful input on these plans during the planning process. All mini grant recipients will be tasked with providing factual information to their contacts. Any attempts to influence a participant's responses or comments regarding any aspect of the RTP outreach is prohibited and is grounds for termination of a mini grant contract by Kern COG.

These activities will coordinate with other public involvement activities conducted by Kern COG. Kern COG will have a defined set of questions and/or types of feedback for all mini-grant recipients to use while reaching out on the RTP/SCS. All answers/input/data collected will be combined and used as input into the 2026 RTP/SCS.

Grant-awarded organizations will receive a detailed orientation about Kern COG, the RTP/SCS and the associated projects. Kern COG will also provide information and necessary materials in English to assist in outreach efforts. All written materials must be translated by mini-grant recipients and approved by Kern COG. Kern COG may provide some staff assistance with graphics and/or formatting documents to accommodate non-English translations.

Estimated Timeline:

Please review the attached background materials and respond with a letter of interest and completed application by **Friday, August 22, 2025, at 12:00 p.m. (noon)**. No applications will be accepted after that date and time.

If needed, organizations whose responses meet Kern COG's outreach needs will be contacted to set up a face-to-face interview with representatives from your organization tentatively scheduled for **Friday, August 29, 2025**. Applicant acceptance and the associated funding level approved will be announced by **Thursday, September 4, 2025**.

Kern COG's goal is to empower each of the grant recipients to begin implementing the RTP/SCS outreach strategies right away. Staff will meet with mini-grant recipients between **September 8 – 12, 2025**, to refine each recipient's scope of work and discuss contract terms. All mini-grant recipients will participate in an orientation on **September 17, 2025**. All outreach should be completed and a final report submitted to Kern COG with each mini-grant recipient's findings and final community input summary by **December 5, 2025**.

Estimated Timeline:

Date	Activity
Friday, July 17, 2025	Release Mini-Grant Application Packets
Friday, August 22, 2025	Mini-Grant Application Packet and Proposals due to Kern COG by 12:00 p.m. (noon)
Friday, August 29, 2025	Applicant Interviews if needed (SAVE THE DATE)
Thursday, September 4, 2025	Applicants notified of acceptance
September 8 - 12, 2025	Finalizing Scopes of Work and signing contracts.
Wednesday, September 17, 2025	Mandatory Orientation Meeting for all recipients (Kern COG)
September 22 – November 7, 2025	Workshops/meetings held
December 5, 2025	Final outreach report due to Kern COG by 4:00 p.m. with all invoices, receipts and documentation.

Scope of Work:

Initially, Kern COG will require each mini-grant recipient to organize a workshop or public meeting specifically for those community members with whom they already have a working relationship. The goal is to obtain community input on the 2026 RTP/SCS. Kern COG staff will attend the meetings and make presentations; however, each recipient is responsible for organizing the meeting/workshop; making all the arrangements; inviting attendees; translating and duplicating materials, providing translation services during the meeting if needed, and arranging all needed workshop transportation, food, child care, etc. for attendees. All meetings must also be open to the public. Awardees must facilitate the workshop or meeting while Kern COG staff acts as presenter.

Each mini-grant recipient will then gather all participant input and submit it to Kern COG electronically and via a reproducible hard copy by the established deadline. Kern COG will supply a reporting format.

Kern COG does not have exact materials at this time; however, recipients will receive them by the orientation meeting.

Mini-grants will be awarded based upon the following criteria:

1. Outreach strategy and goals.
2. Comprehensiveness of the application packet.
3. The specific community demographics and the geographic area the organization will reach. Note that Kern COG is looking to reach a variety of non-traditional participants.
4. The expected number of people who will attend meetings/workshops and submit feedback. This should be based on experience with a target of at least 15 - 20 participants.
5. Experience with previous outreach activities to targeted audiences. How established are the organizational contacts?
6. Grant funding (up to \$2,500) requested and the justification for receiving that amount of money.

Kern COG reserves the right to award the mini-grants as it deems appropriate at funding levels warranted by each applicant's individual outreach strategy. Grant recipients will be required to submit receipts, time cards and other proof of expenses for reimbursement.

What is a Regional Transportation Plan?

Regional Transportation Plans are planning documents developed by a Metropolitan Planning Organization (MPO) such as Kern COG in cooperation with Federal Highway Administration (FHWA), Federal Transit Administration (FTA), Caltrans and other stakeholders including system users. Following the passage of Senate Bill 375, MPOs also need to work closely with the California Air resources Board (ARB) and the California Department of Housing and Community Development (HCD). MPOs are required to prepare these long-range plans per federal statute (Title 23 U.S.C. Section 134). The purpose of the RTP is to establish regional goals, identify present and future needs, deficiencies and constraints, analyze potential solutions, estimate available funding, and propose investments.

Pursuant to Title 23 CFR Part 450.324 et seq. FHWA describes the development and contents of RTPs as follows:

“The transportation plan is the Statement of the ways the region plans to invest in the transportation system. The plan shall 'include both long-range and short-range program strategies/actions that lead to the development of an integrated intermodal transportation system that facilitates the efficient movement of people and goods.' The plan has several elements, for example: Identify policies, strategies, and projects for the future; Determine project demand for transportation services over 20 years; Focus at the systems level, including roadways, transit, non-motorized transportation, and intermodal connections; Articulate regional land use, development, housing, and employment goals and plans; Estimate costs and identify reasonably available financial sources for operation, maintenance, and capital investments); Determine ways to preserve existing roads and facilities and make efficient use of the existing system; be consistent with the Statewide transportation plan; and Be updated every five years or four years in air quality nonattainment and maintenance areas. MPOs should make special efforts to engage interested parties in the development of the plan. In cases where a metropolitan area is designated nonattainment or maintenance area, the plan must confirm to the SIP for air quality.”

The regional transportation planning led by the MPO is a collaborative process that is widely participated by the federal, state, local and tribal governments/agencies, as well as other key stakeholders and the general public. The process is designed to foster involvement by all interested parties, such as the business community, California Tribal Governments, community groups, environmental organizations, the general public, and local jurisdictions through a proactive public participation process conducted by the MPO in coordination with the state and transit operations. It is essential to extend public participation to include people who have been traditionally underserved by the transportation system and services in the region. Neglecting public involvement early in the planning stage can result in delays during the project stage.

Questions may be directed to Ben Raymond braymond@kerncog.org or Rochelle Invina-Jayasiri rinvina@kerncog.org or by calling 661-635-2900.

Community-Based Outreach Mini-Grant Program

Application Form

Organization/Agency: _____

Address: _____

Primary Contact: _____

Phone: _____ E-mail: _____

Organization/Agency Website (not required) _____

(Please make responses as concise as possible; applications will not be judged on length of response.
Attach a separate sheet with the following questions and your answers.)

1. Please list and describe the outreach activities that the organization proposes to carry out in order to facilitate community-based outreach and public involvement on the 2026 Regional Transportation Plan/Sustainable Communities Strategy (RTP/SCS).

Note: Proposed costs for all activities described in response to this question must be included on the project budget sheet.

2. List the staff members or other individuals who will be implementing the Mini-Grant RTP/SCS Outreach program.
3. Please describe the specific demographic of the community targeted and the geographic area the program would reach (please include ZIP codes). What stakeholders would the program reach from specific communities who traditionally may not normally be involved in the regional transportation planning processes (i.e. seniors, youth, low income, minorities, and other)?
4. How many people do you commit to reach while implementing the public outreach strategy? (Validate your numbers – i.e. submit a list of contacts with your application).
5. Please describe the organization's experience working with these particular people or communities.
6. Describe any similar types of projects that your organization has undertaken.
7. How much funding (up to \$2,500) do you wish to apply for? What is your justification for the amount?

Community-Based Outreach Mini-Grant Program Proposed Project Budget Worksheet

Name of Organization/Agency: _____

Proposed Operational Expense Breakdown: Includes costs associated with: telephone and postage expenses directly related to the project, use of in-house copier (amount per copy) and external printing and copying jobs, etc. Overhead can be no more than 15 percent of Contract total.			
TOTAL PART A. PROPOSED OPERATIONAL EXPENSES			\$
B. Proposed Staff Costs: Includes staff who will work on the project and their costs with hourly rates required to complete project.			
Staff Member	Hourly Rate	Hours	
TOTAL PART B. PROPOSED STAFF COSTS			\$
C. Other Proposed Direct Cost Breakdown: May include refreshments, signage, translation equipment, and other appropriate meeting and promotion expenses.			
TOTAL PART C. OTHER PROPOSED DIRECT COSTS			\$

2026 REGIONAL TRANSPORTATION PLAN

COMMUNITY-BASED OUTREACH

Mini-Grant Program

Release Date: Thursday, July 17, 2025
Proposals Due: Friday, August 22, 2025
By: 12:00 pm (noon)

We Need Your Help:

Kern Council of Governments is seeking assistance from community-based organizations to solicit public input into key activities associated with the preparation of its 2026 Regional Transportation and Sustainable Communities Strategy.

Who Should Apply:

Mini-Grants up to \$2,500 will be provided to community based organizations with existing community contacts to ensure diverse and extensive input by further expanding community outreach activities.



**Kern Council
of Governments**

kerncog.org